

Solvency and Financial Condition Report 2022

MS Amlin Insurance S.E.

Cautionary Statement

This Report includes statements with respect to future events, trends, plans, expectation or objectives relating to MS Amlin Insurance S.E.'s ('MS AISE') future business, financial condition, results of operations, performance and strategy. Forward looking statements are not statements of historical fact and may contain the terms, "may", "will", "should", "continue", "aims", "estimates", "projects", "believes", "intends", "expects", "plans", "seeks" or "anticipates" or words which have a similar meaning. No undue reliance should be placed on such statements because, by their nature, they are subject to unknown risks and uncertainties and can be affected by other factors that could cause actual results and plans of MS AISE to differ materially from those expressed or implied in the forward looking statements (or from past results). Factors such as, but not limited to (i) general economic conditions and competitive factors, particularly in key markets, in each case on a local, regional, national and/or global basis (ii) the risk of a global economic downturn (iii) performance of financial markets (iv) levels of interest rates and currency exchange rates (v) the frequency, severity and development of insured claims events (vi) policy renewal and lapse rates (vii) changes in laws and regulations and in the policies of regulators (viii) increases in loss expenses may all have a direct bearing on the results of operations of MS AISE and on whether any targets may be achieved. Many of these factors may be more likely to occur or be more pronounced as a result of catastrophic events. MS AISE does not undertake or assume any obligation to update or revise any of these forward looking statements, whether to reflect any new information, future events or circumstances or otherwise, except as required by applicable laws and regulations.

Table of Contents

Cautionary Statement.....	1
Executive Summary	4
A.1 Business.....	11
A.2 Underwriting performance	14
A.3 Investment performance.....	19
A.4 Performance of other activities.....	21
A.5 Any other information	21
B.1 General information on the system of governance	23
B.2 Fit and proper requirements	30
B.3 Risk management system including the own risk and solvency assessment	31
B.4 Internal Control System.....	37
B.5 Internal Audit function	40
B.6 Actuarial function	42
B.7 Outsourcing	44
B.8 Any other information	48
C.1 Insurance risk	52
C.2 Market risk.....	56
C.3 Credit risk.....	61
C.4 Liquidity risk	65
C.5 Operational risk	67
C.6 Other risks.....	70
C.7 Any other information	71
D.1 Assets	73
D.2 Technical provisions.....	80
D.3 Other liabilities.....	88
D.4 Alternative methods for valuation	92
D.5 Any other information	93
E.1 Own funds	95
E.2 Minimum Capital Requirement and Solvency Capital Requirement	99
E.3 Use of the duration-based equity risk sub-module in the calculation of the Solvency Capital Requirement.....	102

E.4 Differences between the standard formula and any Internal Model used 103

E.5 Non-compliance with the Minimum Capital Requirement and non-compliance with the Solvency Capital Requirement..... 104

E.6 Any other information 105

Executive Summary

This annual Solvency and Financial Condition Report ('SFCR') for the year ended 31 December 2022 has been prepared for MS Amlin Insurance S.E. ('MS AISE' or the 'Company').

Business

The Company is a wholly owned subsidiary of Mitsui Sumitomo Insurance Co. Limited ('MSI'), one of the world's largest general insurers with an overseas network of 50 countries and regions. MSI's immediate and ultimate parent is MS&AD Insurance Group Holdings, Inc., which is also MS AISE's ultimate parent company. The chart presenting the group structure can be found in section A.1.

MS AISE is a leading independent provider of corporate insurance in Western Europe. MS AISE's business is organised around two operating segments, Marine and Property & Casualty ('P&C'). MS AISE underwrites business in both its domestic as well as foreign markets, with the countries of the European Union and the United Kingdom forming the most important ones. The Company is domiciled in Belgium and therefore the supervisory authority is the National Bank of Belgium.

The report has as a basis of presentation Solvency II as well as BEGAAP and IFRS for comparative purposes. IFRS principles are presented as this is the basis by which the shareholder assesses the Company and by which the Management Committee and Board manage the Company.

From 18 until 21 February 2022 several severe winter storms hit Belgium, the Netherlands and France causing considerable damage. MS AISE's exposure through the insurance policies is limited to €16.1 million as there is a maximum exposure, on a net basis, as a result of reinsurance coverage.

Russia began an invasion of Ukraine on 24 February 2022 which is considered the largest conventional military attack in Europe since World War II. The overall materiality of direct exposures in the Company's financial assets is limited and have mostly been impaired down to default levels. In relation to the Company's insurance activities, earned losses are also limited and amount to €9.6 million, on a net basis, after reinsurance coverage.

On 11 March 2022, MS AISE's parent Mitsui Sumitomo Insurance Company, Limited ('MSI') increased the share capital of the Company by an amount of €110.0 million in order to bring it from €30.0 million to €140.0 million without the issuance of new shares. Thus, the subscribed share capital of MS AISE is represented by 1,164,000 shares at a nominal value of €120.27 each.

In September 2022, MS AISE received a UK branch licence from the Prudential Regulation Authority ('PRA'). After Brexit became effective, MS AISE was allowed to operate in the United Kingdom under the Temporary Permissions Regime ('TPR'). This permitted MS AISE to continue carrying out business in the United Kingdom, in the same manner as before, for a temporary period until the application for a third-country-branch licence was approved by the PRA.

On 2 January 2023, MS AISE acquired 90% of the shares of Amlin Netherlands Holding BV for an acquisition price of €17.6 million. The remaining 10% stake is owned by MSI, which is also MS AISE's sole shareholder. Amlin Netherlands Holding BV in turn owns 100% of the shares of MS Amlin Marine NV ('MS AM').

Based on its review, the Management Committee recommended to the Board of Directors refraining from paying any dividend on the 2022 results. The Board of Directors approved this recommendation as of 23 March 2023 and will ask in the annual General Shareholders Meeting not to pay any dividend.

The Company does not consider that the previous mentioned events would threaten its continuity or going concern. The Company has robust financial and operational grounds to sustain the impacts of these events.

Basis of preparation

This SFCR has been prepared in line with the requirements set out in the regulations relating to Solvency II as passed by the European Union, and guidelines issued by the European Insurance and Occupational Pensions Authority ('EIOPA') and the NBB. This report is only to meet the Company's regulatory reporting requirements and should not be relied upon for any other purpose.

Financial information included in this report is based on the generally accepted financial standards IFRS as well as the Company's annual report and financial statements, prepared for the Company's shareholder and in accordance with Belgian accounting standards and requirements ('BEGAAP'). Unless stated otherwise, this report represents the position of the Company as at 31 December 2022 only and will not necessarily reflect all changes in the Company's operations since that date.

Performance

Underwriting performance

MS AISE's gross written premium has increased in 2022 by €114.2 million, while the overall underwriting result has deteriorated by €13.9 million compared to 2021. The deterioration is mainly explained by the catastrophe costs reflecting European storms and hailstorms in France, the Ukraine war conflict leading to additional losses as well as prior year claims deterioration.

BEGAAP underwriting result	2022			2021			Variance	
	Total €'000	Marine €'000	P&C €'000	Total €'000	Marine €'000	P&C €'000	Total €'000	%
Gross written premium	983,294	295,586	687,709	869,131	253,490	615,641	114,163	13.1%
Net written premium	878,633	297,477	581,156	773,225	250,307	522,919	105,408	13.6%
Net earned premium	838,832	284,469	554,363	742,483	243,571	498,912	96,349	13.0%
Net claims	(497,138)	(148,537)	(348,600)	(413,176)	(118,051)	(295,125)	(83,962)	20.3%
Equalisation reserve	(4,611)	-	(4,611)	(6,065)	-	(6,065)	1,454	(24.0%)
Incurred expenses	(330,810)	(110,172)	(220,638)	(303,099)	(100,103)	(202,996)	(27,711)	9.1%
Underwriting result	6,273	25,760	(19,487)	20,143	25,417	(5,274)	(13,870)	

The gross written premium for the marine and transport insurance business in MS AISE showed an increase in 2022 over 2021, mainly driven by prior year written income and new business. Result for the period is a profit of €25.8 million.

The gross written premium of P&C increased mainly due to general liability business. The casualty portfolio has grown across the Belgium, France and Netherlands, partly offset by the United Kingdom. The main drivers are an increase in retention rate, new business and rate increases compared to 2021. Further growth materialised across other product lines with healthy retention rates and new business.

Net claims are €497.1 million which is €84.0 million more than 2021 (€413.2 million). This is largely driven by €16.1 million catastrophe claims for European storms during February and €24.2 million for hailstorms in France during June. Another main driver was the worsening of the prior year claims and current year claims deterioration in the motor segment.

Furthermore, the 2022 allocation of the BEGAAP equalisation reserve for catastrophes deteriorated the underwriting result by €4.6 million.

Investment performance

MS AISE's IFRS investment result over 2022 amounted to an investment loss of €28.4 million (2021: €4.3 million profit). The Ukraine war triggered volatile commodity prices, which contributed to already elevated inflation, causing the major central banks to react with aggressive interest rate hikes to regain pricing stability.

In accordance with BEGAAP accounting standards, the investment income is amended to a loss of €13.5 million, primarily driven by the reversal from the reported result of the net unrealised investment losses under IFRS (€31.0 million). This gain is partly offset by the impairment testing performed on the financial assets, in accordance with BEGAAP principles, which resulted in an addition of €16.0 million to the impairment provision in 2022 and increases the BEGAAP investment loss at 31 December 2022.

The assets are primarily dominated by shares in an Irish domiciled UCITS investments vehicle, which is called the Toro Prism Trust (the 'Trust'). The Trust has other investors from within the MSI Group only. It is structured into 3 sub-funds, i.e. a fixed income securities fund, a liquidity fund and an equity securities fund.

Please refer to section A of this report for further details relating to MS AISE's business and performance during the reporting period.

System of governance

MS AISE has a Board of Directors (the 'Board') and a Management Committee. The Board is constituted to include an appropriate balance of Executive and Non-Executive Directors. The Board has authority over the conduct of the entire affairs of the Company, while recognising that it is a wholly owned subsidiary of MSI. MS AISE therefore operates within a framework, strategy and structure set by its immediate parent. The parent is represented on the Board, but this does not impair the Board's obligation to act in the interests of all stakeholders, in particular in the interests of policyholders.

The Board has several committees, to which it delegates oversight and decision making powers in accordance with documented Terms of Reference, which are contained within the Bylaws. MS AISE must also report to its parent on aspects of its operations in line with Group reporting requirements from time to time.

As from 19 September 2022, the Solvency II key function holder for Internal Audit is the MS AISE Head of Internal Audit, overseeing and managing the Internal Audit function. Until the appointment of the Head of Internal Audit, the Solvency II key function holder for Internal Audit was the MS AISE CEO ('contact person'/ 'person relais') with internal audit services being previously outsourced to MS Amlin Corporate Services Limited ('MS ACS').

No other material changes in the system of governance have taken place over the reporting period.

The Board regards the Company's system of governance overall as adequate. This is subject to continual refinement and review in line with good governance practice.

Please refer to Section B of this report for further details relating to MS AISE's system of governance.

Risk profile

MS AISE's risk profile is explained using the six categories of the Risk Management Framework in line with the business model and strategic objectives. Overall insurance risk dominates MS AISE's risk profile.

Strategic risk

The impact of strategic developments on MS AISE's risk profile is measured using the Own Risk and Solvency Assessment ('ORSA'). The process considers scenario analysis, stress testing and sensitivity analysis to assess both qualitative and quantitative impact. Strategic developments taken into account are:

- achieving profitable growth in a highly competitive market with average combined ratios close to 95%;
- Geopolitical and economic conditions (e.g. regulatory requirements, Ukrainian war, high inflation levels and increasing interest rates); and
- developments within the Group which may impact MS AISE's ability to execute its strategy.

Insurance risk

Insurance risk is mainly driven by underwriting activities and reserving from prior underwriting years. Underwriting risk is concentrated around natural perils such as windstorm or fire, events such as terrorism or cyber, large risks (like shipyards and construction sites) and unforeseen accumulation of attritional losses. These risks are mainly managed by assuring that for every class:

- a maximum line size, exposure and monitoring programme is available; and
- by assuring adequate pricing models are in place.

No significant changes in MS AISE's insurance risk profile have been identified over the reporting period, however an increase in gross written business was noted, for which reference is made to the explanation above and section A.2 of this report.

Market and liquidity risk

Market and liquidity risk is being managed in line with the prudent person principle which requires MS AISE to only conduct investment management activities as long as it can be reasonably demonstrated that there is an appropriate level of understanding of the underlying investment, the Company is able to monitor its investments and can justify its investments as prudent to policyholders.

Exposure to market risk is limited to the extent that investments are balanced to:

- optimise investment income whilst focusing on ensuring MS AISE maintains sufficient capital to meet solvency requirements;
- maintain sufficient liquid funds to meet liabilities when they fall due; and
- use derivative instruments to mitigate equity and foreign exchange risks.

There are no significant changes in MS AISE's market risk profile, however the Company did invest in a new segregated bond mandate during the reporting period. Reference is made to section D.1 of this report.

Credit risk

Credit risk is mainly driven by exposures to reinsurance counterparties and by exposures to brokers and cover holders. This risk is related to the potential deterioration in the financial condition of counterparties, which may have an impact on MS AISE's ability to meet its claims obligations and other obligations as they fall due. Credit risk is managed by having an on-boarding process for both reinsurers and brokers and by managing exposures as well as outstanding balances to these counterparties.

Exposure to broker and cover holder credit risk increased over the year as a consequence of growth in top-line premium during 2022. Past experience showed that there is limited default risk relating to these exposures.

Operational risk

MS AISE operates a diverse business across several offices and jurisdictions and is expected to comply with legal, regulatory and best-practice standards. The potential exists for a failure of critical business processes, people or systems resulting in an interruption to normal operations. MS AISE has a risk averse attitude to operational risk. The Company does not wish to have any operational failures which may hinder trading, result in financial loss or any regulatory sanction for inadequate compliance.

The risk profile for operational risk remained largely the same during 2022. Improvements have been realised in relation to managing information security and the IT infrastructure. Further improvements will be realised in 2023 via the IT and cyber remediation programmes.

Please refer to Section C of this report for further details relating to MS AISE's risk profile.

Valuation for solvency purposes

As at 31 December 2022, the Company had excess of assets over liabilities under Solvency II of €755.5 million (2021: €585.1 million) compared to net assets under BEGAAP of €476.6 million (2021: €371.3 million) and net assets under IFRS of €704.1 million (2021: €591.3 million). The adjustments to move from BEGAAP balance sheet to IFRS and Solvency II balance sheet are set out below:

	2022	2021
	€'000	€'000
BEGAAP net asset value	476,567	371,287
Allowed items – deferred taxes and IFRS16 assets & liabilities	11,648	11,835
Reversal amortisation goodwill	23,293	20,732
Financial assets at fair value	66,937	82,067
Adjustment to IFRS technical provisions	125,678	105,425
IFRS net asset value	704,122	591,345
Disallow items – goodwill, intangible assets, prepayments and deferred acquisition costs	(98,380)	(90,286)
Solvency II technical provisions adjustment	395,200	289,003
Future premiums and claims adjustments	(226,726)	(209,542)
Deferred tax on adjustment items	(18,699)	4,528
Excess of assets over liabilities – Solvency II	755,517	585,049

Please refer to Section D of this report for further details relating to MS AISE's valuation for solvency purposes.

Own funds

	2022	2021
	€'000	€'000
Excess of assets over liabilities	755,517	585,049
Subordinated liabilities	2,486	2,617
Total Available own funds	758,003	587,666
Solvency Capital Requirement ('SCR')	475,622	455,746
Ratio of Eligible own funds to SCR ('Solvency Ratio')	159.4%	128.9%

MS AISE's policy is to actively manage capital so as to meet regulatory requirements and contribute to the Company's target to deliver a cross-cycle return on equity after tax in excess of 7% (2021: 7%), which will be reviewed should the Company move to an internal model and away from the standard formula. As at 31 December 2022 MS AISE's Solvency Ratio was 159.4% (2021: 128.9%). This increase is mainly driven by the €110.0 million capital injection per 11 March 2022 increasing own funds. Reference is made to the significant events during the reporting period as highlighted above.

The subordinated debt has been issued by MS Amlin Corporate Services Limited ('MS ACS') to MS AISE. The agreement is drafted in line with Articles 72 and 73 of the Delegated Regulation (EU) 2015/35 and therefore the subordinated liabilities have been assessed for classification purposes under Solvency II as Tier 2 capital.

The below table analyses the movement in the Solvency II Ratio

	€'000	Solvency II Ratio
Total available own funds over SCR at 1 January 2022	131,920	128.9%
Change in IFRS net assets	112,777	24.7%
Change in Solvency II valuation adjustments	57,692	12.7%
Change in subordinated liabilities value	(131)	(0.1%)
Change in SCR	(19,877)	(6.9%)
Available own funds over SCR at 31 December 2022	282,381	159.4%

The change in IFRS net assets includes the impact of the IFRS profit after tax of €0.9 million for the Company.

The change in Solvency II valuation adjustments reflects those movements in sections D.1 to D.3 of this report.

The change in Solvency Capital Requirement ('SCR') as well as the Minimum Capital Requirement ('MCR') is explained in section E.2 of this report.

Capital structure and arrangements

At 31 December 2022, the Company has own funds of €758.0 million. Per the requirements for Solvency II, this is split into tiers as follows:

	2022	2021
	€'000	€'000
Tier 1	755,517	568,907
Tier 2	2,486	2,617
Tier 3	0	16,142
Total Available Own Funds	758,003	587,666

Tier 1 own funds are made up of the Company's entire share capital along with its reconciliation reserve. There is no restriction on Tier 1 own funds. See section E.1 of this report for more information on this tier.

Tier 2 own funds relate to the subordinated loan the Company has received, which is classified within this tier as per Solvency II criteria.

Tier 3 relates to the net deferred tax asset position of the Company, as this is required to be classified as Tier 3. As at 31 December 2022, there is no Tier 3 capital due to deferred tax liabilities being valued higher than the deferred tax assets on the Solvency II balance sheet. See section D.1 for more information on the deferred tax valuation.

Use of standard formula

The Company uses the standard formula rules, prescribed in the Solvency II Directive, for calculating its SCR. No simplifications have been used in the calculations. Please see section E.2 for more information on the application of the standard formula calculation. MS AISE does use an Internal Model for internal capital setting processes and in support of various strategic and tactical business initiatives (like sensitivity testing and calculating exposures), as well as supporting MS AISE's standard formula calculations.

Please refer to section E of this report for further details relating to MS AISE's own funds.

Section A - Business and Performance

A.1 Business

Legal form

The name of the Company is MS Amlin Insurance S.E. ('MS AISE' or 'the Company'). The legal form of the undertaking is a "Societas Europaea" or "S.E."

The Company is domiciled in Belgium. The address of its registered office is:

Koning Albert II Laan 37
1030 Brussels
Belgium

Group structure

In 2022, MS AISE was a wholly owned subsidiary of Mitsui Sumitomo Insurance Company, Limited ('MSI'), which itself is a wholly owned subsidiary of MS&AD Insurance Group Holdings, Inc. ('MS&AD'). Both MSI and MS&AD are registered in Japan.

The registered address of MSI is 3-9, Kanda Surugadai, Chiyoda-ku, Tokyo, Japan.

The registered address of MS&AD is Tokyo Sumitomo Twin Building (West Tower), 27-2, Shinkawa 2-chome, Chuo-ku, Tokyo, Japan.

MS&AD is the ultimate parent of MS AISE, and the consolidated accounts of MS&AD represent the largest group in which the results of the Company are consolidated.

For the reporting year 2022, MS AISE is subject to supervision by the National Bank of Belgium (NBB) as well as its branch country regulators.

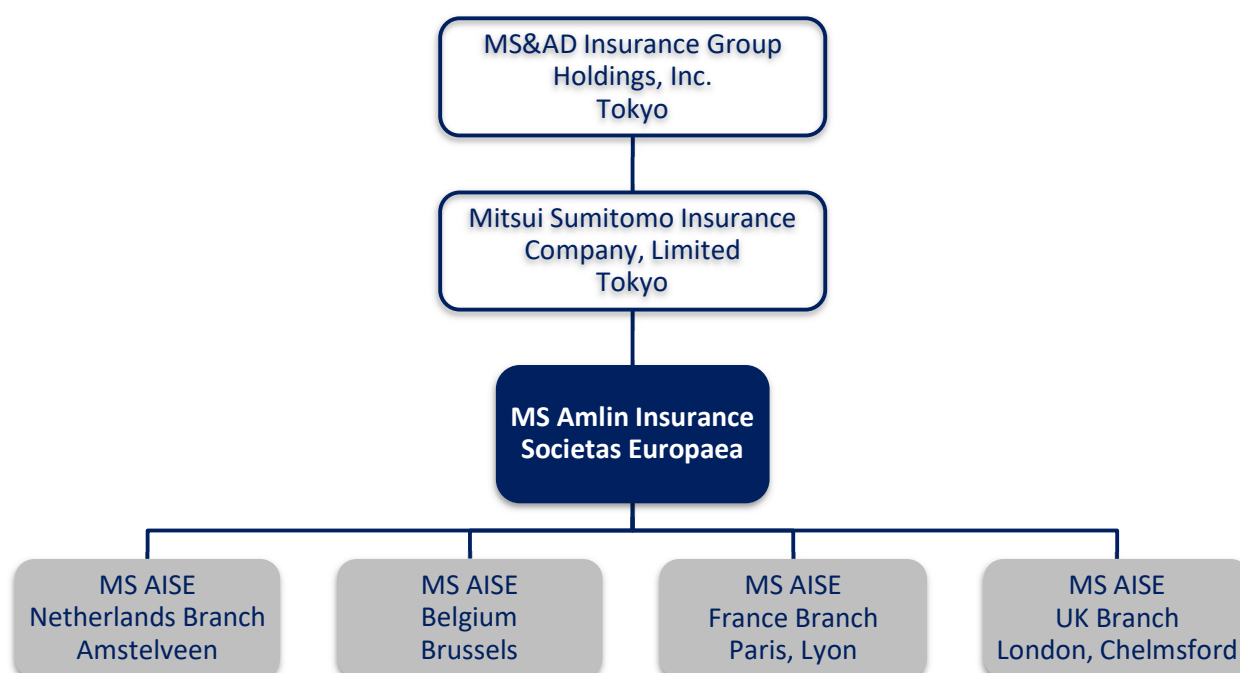
MS AISE operates in four countries, and is organised and managed through two distinct operating segments as follows:

- **Marine:** Primarily focusing on cargo, hull, liability, fixed premium protection & indemnity and yacht portfolios, and other specialist areas such as specie. Operates through the MS Amlin Marine NV ('MS AM') cover holder which is also part of the MS&AD Group.
- **Property & Casualty:** Providing insurance coverage in three main areas – property, casualty and motor – for clients in the Netherlands, Belgium, France and the United Kingdom.

The simplified structure chart below explains the relationships between MS AISE and its parent companies during the reporting period.

MS AISE does not have any related undertakings where a proportion of ownership is held.

This report has as a basis of presentation Solvency II as well as BEGAAP and IFRS for comparative purposes. IFRS principles are presented as this is the basis by which the shareholder assesses the Company and by which the Management Committee and Board manage the Company.



Significant events during the period

From 18 until 21 February 2022 several severe winter storms hit Belgium, the Netherlands and France causing considerable damage. MS AISE's exposure through the insurance policies is limited to €16.1 million as there is a maximum exposure, on a net basis, as a result of reinsurance coverage.

Russia began an invasion of Ukraine on 24 February 2022 which is considered the largest conventional military attack in Europe since World War II. The overall materiality of direct exposures in the Company's financial assets is limited and have mostly been impaired down to default levels. In relation to the Company's insurance activities, earned losses are also limited and amount to €9.6 million, on a net basis, after reinsurance coverage.

On 11 March 2022, MS AISE's parent Mitsui Sumitomo Insurance Company, Limited ('MSI') increased the share capital of the Company by an amount of €110.0 million in order to bring it from €30.0 million to €140.0 million without the issuance of new shares. Thus, the subscribed share capital of MS AISE is represented by 1,164,000 shares at a nominal value of €120.27 each.

In September 2022, MS AISE received a UK branch licence from the Prudential Regulation Authority ('PRA'). After Brexit became effective, MS AISE was allowed to operate in the United Kingdom under the Temporary Permissions Regime ('TPR'). This permitted MS AISE to continue carrying out business in the United Kingdom, in the same manner as before, for a temporary period until the application for a third-country-branch licence was approved by the PRA.

The Company does not consider that the previous mentioned events would threaten its continuity or going concern. The Company has robust financial and operational grounds to sustain the impacts of these events.

Significant events after the reporting period

On 2 January 2023, MS AISE acquired 90% of the shares of Amlin Netherlands Holding BV for an acquisition price of €17.6 million. The remaining 10% stake is owned by MSI, which is also MS AISE's

sole shareholder. Amlin Netherlands Holding BV in turn owns 100% of the shares of MS Amlin Marine NV ('MS AM').

Aside from the items mentioned above no other significant events have been identified during the reporting year or between the reporting date and the date on which this Solvency and Financial Condition Report was submitted.

Supervisor information

MS AISE's supervisor is the National Bank of Belgium ('NBB'), de Berlaimontlaan 14, 1000 Brussels, Belgium.

External auditor information

The Company's appointed external auditor is KPMG Bedrijfsrevisoren CVBA, Luchthaven Brussel Nationaal 1K, 1930 Zaventem, Belgium, represented by Frans Simonetti.

A.2 Underwriting performance

The values in this section are consistent with the values reported in the following Quantitative Reporting Templates ('QRTs'), as included in the annex to this report,

- S.05.01 'Premiums, claims and expenses by line of business'; and
- S.05.02 'Premiums, claims and expenses by country'.

The classification principles of these QRTs are:

- Underwriting foreign exchange gains or losses are excluded;
- Claims management expenses are presented as part of incurred expenses in the QRTs.

The presentation of underwriting performance, as shown below, is in accordance with BEGAAP accounting standards. The underwriting performance for non-proportional inwards reinsurance has not been presented separately in the tables below. The figures are included in the corresponding, more general, Solvency II classifications for lines of business.

Underwriting performance by material line of business

2022 BEGAAP underwriting result	Motor vehicle liability and other motor insurance	Marine, aviation and transport insurance	Fire and other damage to property insurance	General liability insurance	Other non- material lines of business	Total
	€'000	€'000	€'000	€'000	€'000	€'000
Gross written premium	193,070	295,586	218,419	207,358	68,862	983,294
Net written premium	185,553	297,477	176,584	189,055	29,965	878,633
Net earned premium	174,635	284,469	169,499	180,617	29,611	838,832
Net claims	(142,855)	(148,537)	(112,598)	(80,576)	(12,571)	(497,138)
Equalisation reserve	-	-	6,286	(10,897)	-	(4,611)
Incurred expenses	(67,981)	(110,172)	(69,616)	(67,130)	(15,911)	(330,810)
Underwriting result	(36,200)	25,760	(6,430)	22,014	1,128	6,273
Claims ratio	81.8%	52.2%	62.7%	50.6%	42.5%	59.8%
Expenses ratio	38.9%	38.7%	41.1%	37.2%	53.7%	39.4%
Combined ratio	120.7%	90.9%	103.8%	87.8%	96.2%	99.3%

2021 BEGAAP underwriting result	Motor vehicle liability and other motor insurance	Marine, aviation and transport insurance	Fire and other damage to property insurance	General liability insurance	Other non-material lines of business	Total
	€'000	€'000	€'000	€'000	€'000	€'000
Gross written premium	179,532	253,490	212,450	166,288	57,370	869,131
Net written premium	171,288	250,307	165,487	154,633	31,510	773,225
Net earned premium	169,590	243,571	147,148	150,529	31,646	742,483
Net claims	(101,166)	(118,051)	(94,988)	(86,301)	(12,669)	(413,176)
Equalisation reserve	-	-	(4,801)	(1,264)	-	(6,065)
Incurred expenses	(64,760)	(100,103)	(61,851)	(62,109)	(14,276)	(303,099)
Underwriting result	3,663	25,417	(14,493)	854	4,701	20,143
Claims ratio	59.7%	48.5%	67.8%	58.2%	40.0%	56.5%
Expenses ratio	38.2%	41.1%	42.0%	41.3%	45.1%	40.8%
Combined ratio	97.8%	89.6%	109.8%	99.4%	85.1%	97.3%

Overview

MS AISE gross written premium increased by €114.2 million. The underwriting result deteriorated by €13.9 million to a profit of €6.3 million with corresponding combined ratio of 99.3% (2021: 97.30%).

Gross written premium of €983.3 million equates to a growth of 13.1% or €114.2 million mainly driven by €136.2 million new business (2021: €143.2 million) combined with higher retention rate of 88.5% (2021: 86.3%). Renewal rate came down to 1.8% (2021: 3.1%).

Net earned premium of €838.8 million increased by €96.3 million or 13.6% with associated cost for reinsurance equating to 11.1% of gross income (2021: 11.0%).

Net claims, without the impact of the equalisation reserve, of €497.1 million are €84.0 million higher than 2021 (€413.2 million), or an increase in the claims ratio of 3.3% from 56.5% in 2021 to 59.8% in 2022. This increase is largely driven by €16.1 million catastrophe claims for three storms which has passed Europe in February 2022, Ukraine war conflict which reflects €9.6m earned losses and €24.2 million impact from hailstorms in France in May/June 2022. As a consequence of additional premiums in respect of prior year, there were also additional claims which resulted in a net increase of €10.2 million prior accident year claims (2021: €18.3 million loss). Current year claims deteriorated from 52.8% in 2021 to 55.0% in 2022.

Furthermore, there is an impact in 2022 from movements on the BEGAAP equalisation reserve for catastrophes. The reserves at 31 December 2022 resulted into an additional loss of €4.6 million.

Incurred expenses of €330.8 million are €27.7 million higher than 2021 and translates into an expense ratio of 39.4% (2021: 40.8%). Higher acquisition costs and operational expenses in combination with strong income growth has led to a decrease of the overall expense ratio of 1.4%.

Motor vehicle liability and other motor insurance

The MS AISE motor business gross written premium increased in 2022 from €179.5 million to €193.1 million (€13.5 million or 7.5% increase) mainly across the Netherlands and Belgium, primarily driven by high retention rate (91.5%) and new business (€19.7 million). Renewal rate came down to 1.0% (2021: 2.6%).

The underwriting result in 2022 was a €36.2 million loss compared to a €3.7 million profit in 2021. This is mainly explained by an increase in claims ratio of 22.1% (from 59.7% to 81.8%). Net claims of €174.6 million are €41.7 million higher than 2021 (€101.2 million). This is largely driven by prior year claims

worsening (€14.4 million deterioration compared to €0.2 million improvement in 2021) and current year claims deterioration (underlying claims ratio increased from 57.1% to 66.9%).

Marine and transport insurance

The marine and transport insurance business in MS AISE showed a €42.1 million or 16.6% increase in gross written premium in 2022 from €253.5 million to €295.6 million. Majority of the increase is driven by cargo, yacht and fixed premium protection and indemnity classes. This is mainly explained by prior year written income, 83.8% retention rate and €36.6 million new business.

Result for the period is an underwriting profit of €25.8 million compared to €25.4 million profit in 2021, benefiting from additional income. Net earned premium increased to €284.5 million which is €40.9 million (or 16.8%) higher than 2021.

Net claims of €148.5 million are €30.5 million higher than 2021 (€118.1 million) or an increase in the claims ratio of 3.7% from 48.5% in 2021 to 52.2% in 2022. This increase is largely driven by €9.6 million Ukraine War claims impact in 2022, current year claims deterioration (underlying claims ratio increased from 50.2% to 54.4%) and prior year claims deterioration (€5.3 million worsening compared to €3.3 million worsening in 2021).

Fire and other damage to property insurance

The property business of MS AISE showed an increase in premium during 2022. Gross written premium grew by €6.0 million or 2.8% in 2022, mainly driven by new business in France and higher retention rate in Netherlands (+6.2%). The overall retention rate for the reporting year is 88.5% (2021: 78.9%).

The underwriting result in 2022 improved compared to 2021 (from €14.5 million loss to €6.4 million loss), mainly explained by a decrease in claims ratio of 5.1% (from 67.8% to 62.7%) and in expense ratio of 1.0% from 42.0% to 41.1%. Net earned premium in 2022 is €169.5 million, which is €22.4 million (or 15.2%) higher than 2021. Net claims of €112.6 million are €17.6 million higher than 2021 and includes €16.1 million catastrophe claim costs reflecting European Storms and €24.2 million claim costs reflecting hailstorms in Property France.

The 2022 allocation of the BEGAAP equalisation reserve improved the underwriting result by €6.3 million profit (2021: €4.8 million loss).

General liability insurance

In 2022, the casualty portfolio in MS AISE increased by 24.7% (or €41.1 million) with gross written premium of €207.4 million compared to €166.3 million in 2021. This is mainly driven by Belgium, France and Netherlands partly offset by the United Kingdom. The retention ratio increased from 92.2% to 94.2%, coupled with rate increases and new business.

The underwriting result in 2022 is a profit of €22.0 million compared to €0.9 million profit in 2021, benefiting from additional income. Higher profit is mainly explained by a decrease in claims ratio of 7.5% (from 58.2% to 50.6%) and decrease in expense ratio of 4.1% from 41.3% to 37.2%. Net claims of €80.6 million are €5.7 million lower than 2021, driven by prior year claims improvement (€1.2 million improvement compared to €21.2 million worsening in 2021). Current year claims remained in line with 2021 (underlying claims decreases marginally from 43.7% to 43.1%)

The 2022 allocation of the BEGAAP equalisation reserve deteriorated the underwriting result by €10.9 million (2021: €1.3 million loss).

Underwriting performance by material geographical area

2022 BEGAAP underwriting result	Belgium €'000	Netherlands €'000	UK €'000	France €'000	Other €'000	Total €'000
Gross written premium	210,923	450,315	81,514	193,431	47,112	983,294
Net written premium	167,579	438,204	72,422	163,454	36,974	878,633
Net earned premium	158,469	413,015	85,057	156,741	25,551	838,832
Net claims	(105,412)	(242,922)	(45,288)	(89,036)	(14,478)	(497,138)
Equalisation reserve	(2,090)	(11,031)	2,847	1,370	4,293	(4,611)
Incurred expenses	(63,591)	(154,710)	(37,683)	(63,651)	(11,175)	(330,810)
Underwriting result	(12,625)	4,351	4,932	5,423	4,192	6,273
Claims ratio	67.8%	61.5%	49.9%	55.9%	39.9%	59.8%
Expenses ratio	40.1%	37.5%	44.3%	40.6%	43.7%	39.4%
Combined ratio	108.0%	98.9%	94.2%	96.5%	83.6%	99.3%

2021 BEGAAP underwriting result	Belgium €'000	Netherlands €'000	UK €'000	France €'000	Other €'000	Total €'000
Gross written premium	188,703	394,744	104,663	155,052	25,969	869,131
Net written premium	140,028	381,212	95,011	133,187	23,787	773,225
Net earned premium	126,696	361,152	106,952	123,890	23,793	742,483
Net claims	(84,170)	(216,386)	(39,364)	(62,398)	(10,858)	(413,176)
Equalisation reserve	1,051	(1,483)	(6,018)	964	(578)	(6,065)
Incurred expenses	(52,290)	(144,690)	(40,379)	(54,945)	(10,795)	(303,099)
Underwriting result	(8,713)	(1,407)	21,191	7,511	1,562	20,143
Claims ratio	65.6%	60.3%	42.4%	49.6%	48.1%	56.5%
Expenses ratio	41.3%	40.1%	37.8%	44.3%	45.4%	40.8%
Combined ratio	106.9%	100.4%	80.2%	93.9%	93.4%	97.3%

Compared to last year, the underwriting performance of the United Kingdom, Belgium and France have worsened by respectively €16.3 million, €3.9 million and €2.1 million whereas Netherlands improved by €5.8 million.

Belgium

In 2022, the income increased by 11.8% (or €22.2 million) with gross written premium of €210.9 million compared to €188.7 million in 2021. The underwriting result in 2022 was a €12.6 million loss compared to a €8.7 million loss in 2021. This is mainly explained by a higher claims ratio compared to 2021 (2.2% increase) partly offset by lower expense ratio (1.1% decrease).

Netherlands

The Netherlands business of MS AISE showed an increase in premium during 2022. Gross written premium increased by €55.6 million or 14.1% in 2022. The underwriting result in 2022 was a €4.4 million profit compared to a €1.4 million loss in 2021. Net claims of €242.9 million are €26.5 million higher than prior year, mainly due to Motor. This is driven by both prior and current year claims deterioration.

United Kingdom

The United Kingdom showed an €23.1 million or 22.1% decrease in gross written premium from €104.7 million to €81.5 million, predominantly in the Marine segment and Property. The underwriting result in 2022 was a €4.9 million profit compared to a €21.2 million profit in 2021, in large driven by a higher claims and expense ratio compared to 2021, respectively 7.5% and 6.5% higher.

France

In 2022, France income increased by 24.8% (or €38.4 million) with gross written premium of €193.4 million compared to €155.1 million in 2021. The underwriting result in 2022 was a €5.4 million profit compared to a €7.5 million profit in 2021, in large driven by 6.3% higher claims ratio offset by 3.7% lower expense ratio. Net claims of €89.0 million are €26.5 million higher than 2021 highly impacted by €24.2 million claims impact in Property from hailstorms in May/June 2022.

Movements from a geographical perspective have also been covered by the line of business commentary above.

A.3 Investment performance

IFRS investment performance by asset class

Below is an analysis of MS AISE's IFRS investment income by relevant asset class.

	2022	2021
	€'000	€'000
Equities	(23,308)	25,413
Collective Investment Undertakings	(7,090)	(21,024)
Cash and deposits	75	(67)
Corporate bonds	1,921	-
Total	(28,401)	4,322

The financial year 2022 provided a challenging investment backdrop as the Ukraine war triggered volatile commodity prices, which contributed to already elevated inflation, and the major central banks reacted with aggressive interest rate hikes in order to regain price stability. These factors led to a repricing of fixed income assets with yields moving significantly higher. It also impacted equity valuations, where growth concerns also contributed to significant losses in global equity markets. However, returns from the property funds were positive. Many of the key themes from 2021 saw a continued momentum in 2022 as holdings in logistics warehouses and infrastructure performed well. The full year performance is an investment loss of €28.4 million.

The year 2023 is expected to be another challenging year as above target inflation persists, where central banks will be looking to balance the impact of further interest rate increases with the potential damage to the growth outlook that this could cause. Recent interest rate hikes have boosted the yield available for cash instruments, with investors now happy to allocate to this area.

Investments are run on a multi-asset, multi-manager basis. Exposure to the asset classes is achieved using physical holdings of the asset class or derivative instruments. The assets are primarily dominated by shares in the UCITS umbrella Toro Prism Trust (the 'Trust'), which provides sub-funds by asset class and unit classes by currency. The Trust has other investors from within the MSI Group only. Assets may also be managed by MS Amlin Investment Management Limited ('MS AIML') directly or by outsourced managers, on a segregated, pooled or commingled basis. Manager selection is based on a range of criteria which leads to the expectation that value will be added to the funds over the medium to long term. The managers have discretion to manage the funds on a day-to-day basis within investment guidelines or prospectuses applicable to their funds, which ensure that compliance with the investment frameworks is guaranteed. The managers' performance, compliance and risk are monitored on an ongoing basis.

BEGAAP investment performance

The investment return according to IFRS principles differs significantly from the BEGAAP result.

Investments are recognised at fair value under IFRS, while for BEGAAP purposes financial assets are valued at historical cost value less impairment and allowance for bad debt. Therefore, the investment return as a result of the fair value adjustments, also known as the unrealised results, is not recognised in the BEGAAP financial statements.

The BEGAAP investment return equals a loss of €13.5 million and is €14.9 million higher compared to €28.4 million loss under IFRS. This is mainly driven by the net unrealised investment loss under IFRS (€31.0 million) during the reporting year, not being recognized under BEGAAP. This gain is partly offset by the impairment testing performed on the financial assets, in accordance with BEGAAP principles, which resulted in an addition of €16.0 million to the impairment provision in 2022. For more information on the valuation rules for impairment, reference is made to the BEGAAP financial statements.

Investments in securitisation

The Company has a small amount of investments in securitised assets which total 3% of the Company's investment assets.

A.4 Performance of other activities

Other material income and expenses

MS AISE has no other material income and expenses in the statement of profit or loss not included in sections A.2 or A.3 of this report.

Leasing arrangements

MS AISE entered into several non-cancellable rental and lease arrangements.

The rent of the office spaces are:

- In 2022, the Amstelveen office is 0.6 million annually and yearly adjusted for inflation. The floor space will be reduced as of 1 January 2023 with a first upcoming expiration date 31 December 2028 leading to €0.4 million annual rent for 2023 and onwards.
- The Brussels contract, €0.4 million annually and yearly adjusted for inflation, ends 31 July 2027. MS AISE has an early termination option per 31 July 2024.
- Paris and Lyon are €0.6 million annually and are yearly adjusted for inflation. The early termination option for the Paris office contract was used in 2021, ending the agreement per 28 February 2022. The Company has entered into a new lease contract for an office space in Paris as of 1 March 2022, which ends 28 February 2031 and amounts to €0.6 million annually. The lease contract of the Lyon office, €0.04 million yearly, ends 2 April 2026 and has an early termination option per 2 April 2023.

MS AISE has no purchase options on the above mentioned office buildings.

MS AISE also leases various cars under operating lease agreements.

In total for reporting year 2022, MS AISE incurred €2.9 million for lease and rental expenses (2021: €3.2 million).

A.5 Any other information

All material information relating to the Company's business and performance has been disclosed in sub-sections A.1 to A.4 above.

Section B - System of Governance

B.1 General information on the system of governance

B.1.1 Structure of the Board and management

MS AISE has a Board of Directors (the 'Board') and a Management Committee. The Board is constituted to include an appropriate balance of Executive and Non-Executive directors. The Board has authority over the conduct of the entire affairs of the Company, while recognising that it is a wholly owned subsidiary of MSI. MS AISE therefore operates within a framework, strategy and structure set by its immediate parent. The parent is represented on the Board, but this does not impair the Board's obligation to act in the interests of all stakeholders, in particular in the interests of policyholders.

MS AISE reports to its parent on aspects of its operations in line with reporting requirements set by its parent from time to time.

The Board sets the strategic direction of the Company and determines the risk appetite and framework of systems and controls. The Board ensures that MS AISE's Management has the right balance of skills, experience, independence, knowledge and diversity for an evolving business. The Board achieves this by:

- A programme of Board effectiveness evaluation;
- A training and development programme for all directors and senior management;
- Continued analysis by the Remuneration and Nomination Committee of the balance of skills, experience and diversity when appointing new MS AISE directors and key staff;
- Continued focus on the development of potential employees with Board readiness specifically in mind, as well as corresponding succession planning and talent development.

The responsibilities of the individual Executive and Non-Executive directors during the reporting period are described later in this section.

The Board has several committees, to which it delegates oversight and decision-making powers in accordance with documented Bylaws. These are described in more detail later in this section.

Main roles and responsibilities of the Board and Management Committee

The Board determines the overall business strategy and risk policy; and supervises the Company's activities. The Management Committee is responsible for the specific management of the Company's activities, the enforcement of the risk management system and maintaining the organisational and operational structure. Duties and matters reserved to the Board, the Management Committee and other bodies of the Company are described in the Company's Bylaws. These Bylaws are reviewed periodically by the Board to ensure that they remain appropriate.

The Board meets at least four times per year, with regular contact between Management Committee members and Non-Executive Directors throughout the year. All directors have access to the advice of the Company Secretary, and all directors, committees, and the Board itself may procure professional advice at MS AISE's expense in the furtherance of their duties.

Within the MS AISE Board of Directors the following roles existed during the reporting period:

Executive / Non-Executive Director	Role
Independent Non-Executive	Chair of the Board and Chair of the Remuneration and Nomination Committee
Independent Non-Executive	Chair of the Audit Committee
Independent Non-Executive	Chair of the Risk Committee and Investment Governance Committee
Independent Non-Executive	Chair of the Underwriting Oversight Committee

Executive / Non-Executive Director	Role
Independent Non-Executive	Independent Non-Executive Director
Non-Executives	Shareholder representatives
Executive	Chief Executive Officer
Executive	Chief Financial Officer
Executive	Chief Risk Officer

Segregation of responsibilities within the MS AISE Board

The Bylaws of the Company set out how key Board level responsibilities have been allocated to the roles. The Governance and Risk Management Frameworks clearly articulate the procedures for decision making. These are documented within the respective sections of the Bylaws for the Board and its committees. The frameworks include both corporate and regulatory requirements, such as strategic matters and Solvency II requirements. The Governance Framework also details explicit procedures for key activities such as financial reporting disclosures and contingent future management actions in the event of certain matters arising.

Key MS AISE Board Committees are:

Management Committee

The Management Committee of MS AISE meets at least quarterly but in practice monthly. Its membership is composed as follows:

Director / Management	Role
Executive Director / Chair	Chief Executive Officer
Executive Director	Chief Financial Officer
Executive Director	Chief Risk Officer
Committee member	Chief Underwriting Officer Marine
Committee member	Chief Underwriting Officer Property & Casualty
Committee member	Head of Claims
Committee member	Chief Operating Officer

Its remit is determined by the Bylaws and includes operationalising the strategy, risk management, administrative and accounting procedures, internal controls and integrity policy. The Management Committee also introduces, monitors and assesses the organisational and operational structure as well as providing financial, management and prudential reporting.

The Audit Committee

The MS AISE Audit Committee meets at least quarterly. Its membership is composed of Non-Executive Directors only. Its remit is determined by the Bylaws and includes financial reporting and Solvency II reporting matters, as well as internal controls in scope for J-SOX attestation, internal audit and external audit.

The Risk Committee

The MS AISE Risk Committee meets at least quarterly. Its membership is composed of Non-Executive Directors only. Its remit is determined by the Bylaws and includes risk management issues and solvency capital requirements as well as issues pertaining to regulatory compliance.

The Remuneration and Nomination Committee

The MS AISE Remuneration and Nomination Committee meets at least quarterly. Its membership is composed of the independent Non-Executive Directors and a representative of the shareholder. The Committee is chaired by the Chair of the Board. Its remit is determined by the Bylaws and it leads the process for appointments to the MS AISE Board, Management Committee, independent control functions

and Solvency II identified staff. It advises the Board on the Company's remuneration policy and remuneration for Solvency II identified staff.

The Underwriting Oversight Committee

The Underwriting Oversight Committee ('UOC') meets at least four times a year. The Committee membership is composed of independent Non-Executive Directors. Its remit is determined by the relevant Bylaws. The remit of this Committee is to oversee the performance, strategy and control framework around underwriting activity of the Company and make recommendations, as appropriate.

The Investment Governance Committee

The Investment Governance Committee ('IGC') meets at least four time a year. Its membership is composed of an independent Non-Executive (Chair) and the Executive members of the Board. Its remit is to assist the MS AISE Board in discharging the responsibilities it has in relation to the Investment Management function ('IM'). The IGC has oversight of the IM and the delegation of investment management to it by MS AISE.

Reporting to the MS AISE Board and its Committees

Monthly and quarterly management information reports are tabled for discussion, reviewed, and challenged at the Board and its committees' meetings, including Management Committee meetings. The reporting covers various business areas including, but not limited to, underwriting, reinsurance, claims, actuarial and reserving, finance, investments, human resources, compliance, legal, internal audit, external audit, risk, internal control and strategy. The reporting facilitates informed decision making.

Roles and responsibilities of key functions

All staff, including key function holders, have clearly defined roles and responsibilities detailed in their job specifications. Performance appraisals take place where staff is assessed against their performance objectives and the requirements of their roles.

The table below comprises the functional areas identified by MS AISE as key functions in accordance with the Solvency II Directive, along with the individuals identified as key function holders, and their management reporting lines.

Key function	Main responsibilities	Key function holder	Reports to	MS AISE Board responsibility
Enterprise Risk Management function	Responsibility for the performance of MS AISE's ORSA. For further information on the ORSA, please refer to section B.3.2.	Chief Risk Officer	Chief Executive Officer	Chief Risk Officer
Assurance and Monitoring function	To assist MS AISE's management in meeting the control framework requirements, through assurance and monitoring reviews.	Chief Risk Officer	Chief Executive Officer	Chief Risk Officer
Internal Audit function	To assist the MS AISE Board and the Management Committee to protect the assets, reputation and sustainability of the Company, through the provision of an independent appraisal of the adequacy and effectiveness of the risk management and control processes. For further information on the Internal Audit function, please refer to section B.5.	Head of Internal Audit	Non-Executive Director (Audit Committee Chair); administrative reporting line to the CEO	Chief Executive Officer

Key function	Main responsibilities	Key function holder	Reports to	MS AISE Board responsibility
Actuarial function	To provide assurance on the actuarial function holder responsibilities. For further information on the Actuarial function, please refer to section B.6.	Chief Actuary	Chief Risk Officer	Chief Risk Officer
Compliance function	To provide an appropriate degree of assurance to the MS AISE Board that the Company is operating in a way which is compliant with relevant rules and regulations.	Chief Compliance Officer	Chief Risk Officer	Chief Risk Officer

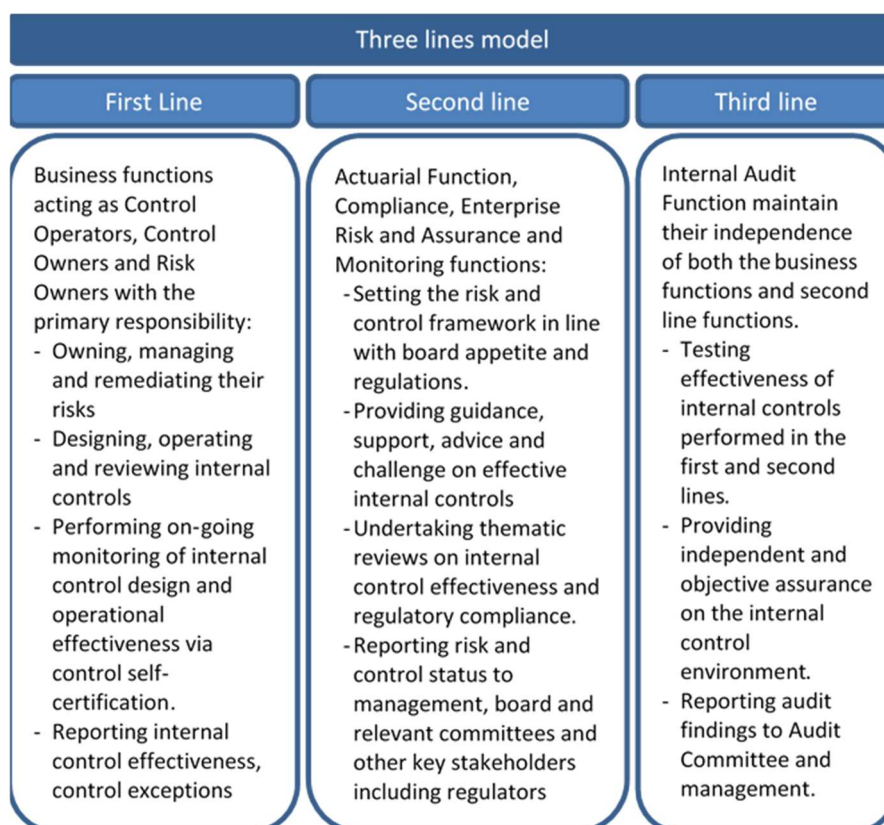
The assurance functions are adequately resourced and are staffed by appropriately qualified, skilled and experienced individuals. The assurance functions are authorised and empowered to operate within their agreed terms of reference/charters. The Head of Internal Audit reports functionally to the Audit Committee Chair, an independent Non-Executive Director. The Head of Internal Audit has an administrative reporting line to the CEO, which includes matters such as the determination of necessary human and IT resources as well as the performance with respect to recommendations of the Board or Audit Committee.

The Chief Risk Officer, the Chief Actuary and the Chief Compliance Officer report to the MS AISE Risk Committee on a quarterly basis.

Assurance reports are also made available to the Management Committee for their review and consideration but are not subject to Executive approval.

The three lines model

The MS AISE three lines model explicitly defines the roles and responsibilities of all staff across MS AISE based on their remit and authority. The three lines model can be explained as follows:



MS AISE's second line team supports the first line to implement and operate their controls to take responsible business decisions. The second line team combines expertise from the Compliance, Assurance and Monitoring, Actuarial functions and Enterprise Risk team.

The third line operates with complete independence from both the first and second lines to enable them to provide objective and independent assurance to the MS AISE Audit Committee and Board.

Segregation of duties

Segregation of duties is a key control within MS AISE that supports transparent governance and culture, and promotes clear accountability for activities. It is built into the Corporate Governance Framework, Organisational Structure, Key Persons Framework Design, Risk Management Framework and Internal Control Framework.

Information systems

Management reporting is performed through the MS AISE Management Committee and ultimately to the MS AISE Board, giving them oversight of the management information containing underwriting, finance, risk, human resources, investments, actuarial and internal control. This reporting forms part of the Company's ORSA process with information contributing to both risk management and capital related decisions.

Risk Management Framework

MS AISE has a Risk Management Framework that seeks to support the fulfilment of its long term strategic objectives, whilst protecting the interests of all third parties, including its policyholders.

The framework complements the systems of governance, ensuring risk management is inherent in the day-to-day activities of the Company and in the key decisions made by the MS AISE Board and its committees.

The framework ensures that information on both qualitative and quantitative aspects of MS AISE's material risks is made available to the Board and its committees, including the Management Committee, and that decisions take account of available own funds to support the mitigation of risks.

Further details on MS AISE's key risk management activities are detailed in section B.3 of this report.

Internal Control Framework

MS AISE operated a system of internal controls for the full year ended 31 December 2022. MS AISE's Internal Control Framework was adopted by MS AISE after formal approval by the MS AISE Audit Committee. The framework was developed in consultation with the Internal Audit, Compliance and Risk functions. It is based on a set of core principles (control environment, risk assessment, control activities, information, communication, monitoring and testing) and references to MS AISE's three lines model. Furthermore, it sets out roles and responsibilities for MS AISE staff of all levels as it relates to matters of internal control.

Further details on MS AISE's internal control framework are provided in section B.4 of this report.

Policies and Standards Framework

MS AISE is supported by a Policies and Standards Framework that articulates the roles, responsibilities and activities that staff must fulfil in relation to these policies and standards. Key policies and standards are translated for non-English speaking staff. All MS AISE staff is required to attest annually that they have read each of the policies and standards that are relevant to their role. Through the respective assurance programmes of the Risk, Compliance and Internal Audit functions, compliance with policies and standards is monitored, reviewed and challenged.

The framework also includes governing mechanisms, such as:

- Explicit ownership by named heads of functions or Executives;
- Monitoring by the Compliance function to ensure policies and standards are kept up to date and that all staff has read them periodically;
- Escalation of breaches to relevant committees and governance forums.

B.1.2 Remuneration policy and practices

Remuneration strategy

The aim of the MS AISE Remuneration Standard is to ensure that the way MS AISE's people are rewarded is in accordance with and supportive of the Company's and its parent's vision, objectives and strategy – including the Company's risk profile and risk management practices. The MS AISE Remuneration Standard was approved by the MS AISE Board.

By achieving this, the maximum possible alignment between the interest and long term career development of employees is secured, alongside the ambitions of the Company and the creation of long term shareholder value (in accordance, at all times, with agreed levels of ambition and risk appetite).

The MS AISE Remuneration and Nomination Committee (the 'Committee'), subject to Solvency II and relevant remuneration regulatory principles, develops, implements and monitors the remuneration policy and practices designed to attract, retain and motivate employees to add value to MS AISE but prevents having to remunerate at levels which are not merited.

There is a formal and transparent procedure for developing policy on remuneration and for setting the remuneration packages of employees. The Committee also has the discretion to reduce all components of the calculated bonuses to zero if MS AISE were to make a loss over the reporting year.

MS AISE supports and adheres to regulatory and other appropriate remuneration guidelines unless there is a clear rationale to justify departure or alternative arrangements.

Without prejudice to the foregoing, reward arrangements and practices are designed, implemented and maintained by taking into account best-practice where appropriate:

- With an understanding of the external pay environment;
- With the necessary level of transparency to ensure that MS AISE's shareholder may see the link between remuneration paid to Directors and Senior Executives, and corporate performance (considering the cost of capital incurred in delivering such performance where appropriate);
- Ensuring that the financial position and financial soundness of the organisation is taken into account at the time such remuneration is paid;
- Incorporating appropriate safeguards to avoid conflicts of interest;
- Ensuring that an ethical, high-performance culture exists within MS AISE, which is aligned to MS AISE's values; and
- Rewarding staff differentially related to performance (MS AISE does not reward for failure).

MS AISE supports the principles of equal opportunities and the management of diversity in employment. Remuneration structures are fair, equitable and free from bias on grounds of gender, ethnic origin, nationality, religious beliefs, disability or any other legally protected characteristics.

Remuneration structure

The remuneration structure for administrative, management or supervisory body employees (excluding Non-Executive Directors) reflects the potential impact on MS AISE's risk exposure arising from the actions and decisions of these categories of staff. This is achieved by having remuneration arrangements which contain the following characteristics whilst being compliant with local laws and regulations:

- The fixed component of remuneration represents a sufficiently high proportion of the total remuneration;
- The variable component of remuneration is based on a combination of MS AISE's performance and personal performance (using both financial and non-financial measures), as described by the plan rules and/or accompanying guidelines or individual participant communications. It is designed with the intent that top quartile performance is rewarded with top quartile total remuneration and the intent of paying no variable component where a minimum performance threshold is not reached. The non-financial measures referenced in the remuneration setting include the degree of employee alignment with role specific competencies, corporate values and agreed risk appetite;
- A proportion of the variable remuneration is subject to deferral over a period of not less than three years, in accordance with the deferral target ratio and is also subject to appropriate malus and clawback requirements. Non-financial risk factors which might result in ex-post risk adjustment would include risk failings considered to be material such as adverse audit findings (internal and external), adverse special investigation findings, failure of internal controls, risk appetite breaches, regulatory considerations (including conduct risk) and certain types of misconduct cases;
- The calculation of the aggregate non-discretionary annual variable and non-discretionary individual awards cost is subject to suitable adjustment for factors (both financial and non-financial) of current and future risk;
- Termination and/or redundancy payments are linked to the performance of the individual to ensure failure is not rewarded;
- There is a prohibition from using any personal hedging strategies or remuneration and liability related insurance for remuneration arrangements.

MS AISE has pension plan arrangements but does not have any active supplementary pension plans. Early retirement terms, from MS AISE sponsored pension plans, are pre-determined in the plan rules. MS AISE does not make discretionary enhancements to these terms.

B.1.3 Material changes over the reporting period

There were no material changes to the system of governance during the reporting period.

B.1.4 Material transactions

There were no material transactions during 2022 with shareholders or persons that exercise significant influence.

B.2 Fit and proper requirements

MS AISE seeks to ensure that the Board and Management Committee contain the appropriate balance of skills and experience to ensure that the Company can be adequately managed and controlled. MS AISE's expectations in relation to fitness and propriety are set out in the Fit & Proper Standard. The standard sets out requirements for:

- Fitness – including proper professional qualifications, required knowledge and experience, and the required balance of skills across the management body to ensure sound and prudent management of the Company and the performance of an individual's role; and
- Propriety – individuals should be of good repute and have integrity.

MS AISE operates procedures at the time of recruitment to ensure that individuals demonstrate appropriate levels of fitness and propriety. Precise requirements vary, depending on the role the individual is undertaking, and the location of their work, but for senior roles pre-employment checks will generally include:

- Criminal record checks;
- Credit checks;
- The taking up of employment references; and
- Obtaining proof of professional and other qualifications.

All members of the Board, Management Committee, independent control functions and material risk takers are required to follow a 'fit and proper' procedure as defined in the Belgian Solvency II Law, and the SM&CR procedure as defined by the UK regulator ('PRA') for the UK branch. Individuals employed to undertake roles which are subject to Fit & Proper requirements are not allowed to take those roles up until these are approved by the relevant regulator.

On an ongoing basis the individuals mentioned above are subject to:

- Training and development requirements based on their role and responsibilities;
- Performance management processes, including at least an annual formal performance appraisal;
- Regular reviews of remuneration practices, to ensure that incentives are appropriate;
- A duty to disclose any form of dishonest conduct or change in their fit and proper status; and
- An obligation to disclose conflicts of interest.

B.3 Risk management system including the own risk and solvency assessment

This section provides an overview of MS AISE's risk management system including its Own Risk and Solvency Assessment ('ORSA').

B.3.1 Risk management system

The risk management system is explained by elaborating on MS AISE's risk management strategy, framework and underlying processes and reporting procedures. This section concludes with a description of how the system has been integrated in the organisational structure and decision making processes.

Risk management strategy

MS AISE has a top-down approach to risk management whereby the Board has developed a high level risk and capital management statement and mandated its adoption through the Risk Management Policy. To fulfil the needs of MS AISE's Risk Management Policy, a Risk Management Framework has been developed.

MS AISE's vision and core values provide the strategic focus for the risk management system to deliver "an effective Risk Management Framework which optimises return for the risks we take" with the objective to deliver long term value to its stakeholders (i.e. shareholders, policyholders, staff and other interested parties). This is achieved by actively seeking and accepting risks while managing the risks within acceptable bands.

MS AISE's risk management strategy has four key elements:

- Clearly defining ownership and responsibilities for identifying, assessing and managing risks across the organisation;
- Ensuring that there is a clear understanding of appetite for key risks, within the overall appetite of the parent, and that there are agreed maximum risk limits or tolerances in place;
- Establishing and maintaining a sustainable enterprise risk management process as an integral part of its business model supporting business planning and capital management; and
- Creating a risk aware culture across the organisation by informing, training and motivating staff to consider risk within their day-to-day decision making.

The implementation of the Risk Management Policy and Framework ensures the analysis of risk on an ongoing basis where assessments consider current risk exposures, as well as forward looking exposures. The analysis considers future business projections as well as emerging trends through potential scenarios and capital management requirements.

Linkage to capital management

MS AISE's Capital Management Policy seeks to actively manage capital in alignment to the size of the Company's aggregated risk profile, taking into account of regulatory obligations, requirements to hold contingent capital to support growth and a desire to deliver the return on capital as set by the Board. As a result, the Capital Management Policy plays an integral role within the ORSA process.

Capital is a key consideration in setting business plans and strategies. In order to assess whether returns are sufficient to compensate for the risks taken.

MS AISE calculates capital requirements using both the standard formula as set in Solvency II legislation and a stochastic Internal Model.

The standard formula is used for calculating and reporting Solvency II capital requirements to regulators.

The Internal Model is used within MS AISE for aggregation of the risk profile, including exposures and concentration, and calculation of internal capital requirements.

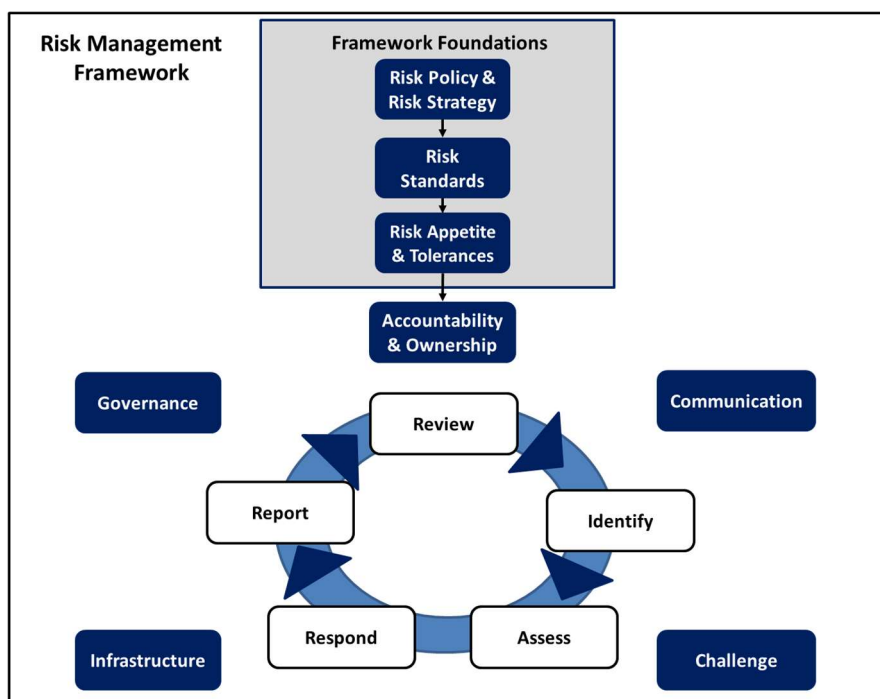
The Actuarial function oversees the process, governance and validation of the Internal Model and is responsible for ensuring the model is appropriately governed and utilised. The capital modelling team is responsible for the day-to-day management of the model including the calculation kernel, model parameterisation, economic simulator generator, catastrophe models and operational risk input.

The next table presents the use of the standard formula and Internal Model within the Company during 2022. MS AISE’s capital management strategy is further explained in section E.1 of this report.

Process	MS AISE
Communicate SCR to regulator	standard formula
Internal capital requirement	standard formula, Internal Model
Decision making	standard formula, Internal Model
Risk assessment	standard formula, Internal Model

Risk Management Framework

MS AISE’s Risk Management Framework, as presented below, consists of a suite of standards, governance processes and procedures that put risk management into practice. It is built into the core operating model of the Company and forms part of the overall approach to internal control. It provides the infrastructure within risk governance and sets out the processes required to sustain risk management within MS AISE.



The framework and underlying processes (see paragraph on risk management process) are being managed by the Risk function. This is an independent second line function which reports directly to the Risk Committee. The function is managed by MS AISE’s CRO which sits as an Executive Director in the Board of the Company. The CRO also oversees the MS AISE Compliance and Actuarial function. Within MS AISE there are dedicated resources which oversee the total framework. Additional resources in risk analytics have been added throughout the reporting year in order to strengthen areas like investment risk oversight and management.

The scope of the Risk Management Framework is entity wide and applies to all business activities, countries, functions, systems and employees. It covers day-to-day activities, acquisitions, disposals, outsourcing arrangements, joint ventures, new products and strategic projects.

The Risk Management Framework is documented in the Risk Management Policy, Risk Management Framework Overview, three lines framework and underlying standards per risk category. These documents are evaluated on an annual basis and re-submitted to the Risk Committee for approval.

Risk categorisation

MS AISE groups the relevant risks into six key categories as specified in the table below. Accordingly, the Risk Management Framework has been designed to take account of these risk categories and seeks to ensure ownership, accountability and consistency in processes and approach where possible.

Each of these risk categories is owned by a Management Committee member with appropriate expertise and authority to manage the risk on a day-to-day basis.

Risk category / Risk owner	Definition	Scope	Paragraph in section C
Insurance risk / CEO, CUOs, CFO, Head of Claims	Risk of loss arising from the inherent uncertainties in the occurrence, amount and timing of insurance liabilities and premiums. This includes reserving risk or claims arising on business written prior to the year in question.	Underwriting, catastrophe, pricing, delegated authority, product and conduct, reserving, claims, reinsurance (excluding reinsurance credit risk)	C.1
Market risk / CFO	Risk arising from fluctuations in values of, or income from, assets, interest & currency rates and investment returns.	Investment market volatility, investment counterparty risk, currency fluctuation	C.2
Credit risk / CFO	Risk of loss if counterparty fails to perform its obligations or fails to perform in a timely fashion.	Reinsurers, brokers, cover holders, (re-)insureds, banks	C.3
Liquidity Risk / CFO	Risk arising from insufficient financial resources being available to meet liabilities as they fall due.	All assets and potential liabilities	C.4
Operational risk / CEO, COO, CFO, Head of Claims	Risk from inadequate or failed internal processes, people and systems, or from external events.	Systems, cyber, information security and technology, business interruption, outsourcing, data, people, legal and regulatory financial reporting	C.5
Strategic risk / CEO	Risk of the current and prospective impact on earnings or capital arising from adverse business decisions, improper implementation of decisions or lack of responsiveness to industry changes.	Group, political & economic, conduct, capital management, merger & acquisition	C.6

The above material risks (except for strategic risk) are all included in the calculation of MS AISE's Solvency Capital Requirement as set out in Article 101(4) of SII Directive 2009/138/EC.

The risks in scope of each of the above categories are captured in an entity specific risk register that supports assessment, monitoring and reporting of the risks. The key processes of the Risk Management Framework are discussed in more detail below. The associated exposures, concentrations, mitigating strategies and reporting procedures for each category of risk are described in more detail in section C (see reference in last column of table above).

Risk management process

MS AISE's risk management process, as described in the Risk Framework, measures, manages and monitors risks on a continuous basis, both on an individual as well as at an aggregated level. It is an iterative process with high involvement of MS AISE's Board and functions, including underwriting management (the first line).

This risk management process can be summarised via the below activities. These are performed in cooperation with the other control functions, like the Compliance and Actuarial function, where needed.

- The Board is responsible for aligning MS AISE's strategy with its risk appetite. A Risk Appetite Statement per risk is approved by the MS AISE Board.
- Risk Appetite Statements are translated into measurable tolerances and limits. Management is accountable for managing levels of risk within the allocated limits. Exposure versus limits is reported quarterly to the MS AISE Risk Committee and Board.
- Via the Internal Model and standard formula a wide range of parameters are stressed and potential impact of future developments is assessed using sensitivity and scenario analysis (see also next section on ORSA).
- Risks are assessed periodically by the first line risk owners and challenged by the second line functions. The purpose of these activities is to identify, assess and analyse areas of risk exposure and associated mitigation.
- Effectiveness of mitigating risks is measured via the Internal Control Framework ('ICF'). The relationship between the risk management process and the ICF is explained in section B.4.
- Reporting on the Risk Management Framework, including Risk's opinion on first line's effectiveness in managing risk exposure is done by the Risk function to MS AISE's Management Committee and Risk Committee on a regular basis.

Lessons learned from the risk management process are used as input in the strategy setting process for the following year, but also for improving risk culture and awareness entity wide.

Decision making processes

MS AISE's Board is responsible for making key decisions across the organisation, but delegates some of its decision making responsibilities to its committees, e.g. the Management Committee, Risk Committee and Audit Committee. The Risk function presents its opinion on risk exposure to the MS AISE Management Committee in order to provide opportunity for concluding on mitigation actions, after which the output is reviewed by the Risk Committee, with a summary of key items taken to the Board.

An important instrument which explains how the risk management function is integrated into the organisational decision making processes is the ORSA reporting process. This process is detailed in the next section.

B.3.2 Own Risk & Solvency Assessment ('ORSA')

The ORSA is fully embedded into the overall Risk Management Framework and aligned to capital strategy and business planning related processes and decision making. The Company operates an annual cycle with numerous inputs and outputs to the process throughout the year, summarised into an annual ORSA report which is presented to MS AISE's Management Committee, Risk Committee and Board.

The Board is accountable for sustaining a robust ORSA process that informs management on business strategy in relation to risk exposure and solvency. MS AISE defines its ORSA process as:

- The entirety of its risk management processes and procedures that seek to identify, assess, monitor, manage, and report the short and long term risks of the Company and its strategy;
- The processes and activities used to determine the adequacy of own funds necessary to ensure that the overall solvency needs of the Company are met at all times;
- A process that links and articulates the development and management of the Company's risk profile and associated capital requirements.

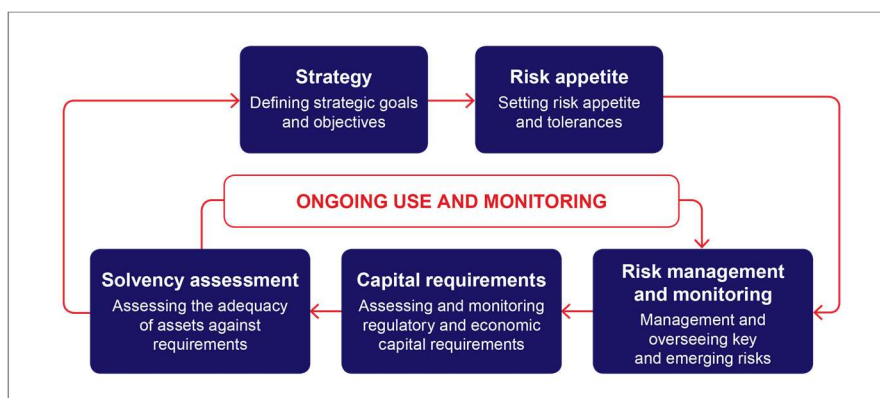
The last full iteration of the ORSA process concluded with the presentation of the annual ORSA report to the MS AISE Management Committee, Risk Committee and Board in June 2022. A copy of the report was shared with the NBB.

The Risk Committee oversees the execution of the ORSA process ensuring it is appropriate and follows the governance process. The Risk Committee ensures that:

- The ORSA is reviewed by all members of Management Committee;
- The ORSA is presented to the Risk Committee for review and comment; and
- The Board approves the ORSA, subject to the actions raised.

ORSA Processes

The ORSA leverages key business processes, the Risk Appetite Framework, Risk Management, capital modelling and finance processes. The process runs in conjunction to the business planning process, allowing it to inform the development of the business plan during the annual cycle. The process covers current year business plan monitoring on a quarterly basis as well as forward looking forecasting of future years.



Current year monitoring

The current year monitoring ORSA process is designed to provide MS AISE's Management Committee and Board with a clear understanding of the solvency position at a particular point in time, given the risk exposures. Current year monitoring runs from the start of the financial year to 31 December with quarterly reporting in place.

As part of current year monitoring MS AISE's business plan is assessed and challenged by the Risk function which takes into consideration risk, capital and solvency implications. The development of the business plan against these considerations is monitored during the year to ensure that the business plan and levels of risk remain within predefined risk appetites and tolerances.

The iterative current year monitoring takes account of all (net) current risk exposure that determine solvency requirements via the Internal Model and standard formula. Capital requirements are assessed versus actual own funds and consider the capital management ranges and intervention points detailed in the Capital Management Policy. The quarterly outcomes of current year monitoring are used to support decision making and are standing agenda items for the Risk Committee and Board.

Forward looking forecasting

Forward looking forecasting seeks to identify, assess, monitor, manage and report the longer term strategic risks and forecast returns faced by the organisation. It also considers how MS AISE's solvency needs are impacted by changes in these risks. Forward looking forecasting is conducted using a selection of stress and sensitivity tests which are challenged in the Management Committee, Risk Committee and/or Board meetings. It is an annual process and summarised into the annual ORSA report. Capital requirements are calculated using both the standard formula and the Internal Model.

The process is based on a number of sub-processes operated through the year to identify, assess and manage the possible risks MS AISE may face in the next financial year and beyond. It is designed to ascertain that sufficient own funds, necessary to meet the solvency requirements, are held at all times in these future periods.

Ad hoc ORSA reruns

There is a framework to determine if the ORSA process needs to be executed outside of the typical schedule. Both the quarterly current year monitoring process, forward looking process and resultant reports can be run outside of these timeframes (in full or partially) if there is a significant (risk) event, or series of (risk) events that may necessitate the immediate review and re-evaluation of MS AISE's solvency position or risk profile based on changed circumstances and assumptions.

Examples of such ad hoc triggers include, but are not limited to, business plan reforecasts, material underwriting catastrophes, material financial market movements/volatility or material reserve adjustments.

Stress, scenario and sensitivity testing framework

MS AISE has an established stress, scenario and sensitivity testing framework to assess its risk profile. Testing is based on the business plans and capital projections of the Company. The process seeks to challenge assumptions made and calibrations used in determining the expected business plan, as well as to evaluate the financial robustness of MS AISE in extreme circumstances. The process also challenges or improves management's preparedness for extreme events. On an ad hoc basis stress and scenario analyses are performed via the risk assessment process or via deep-dives into a specific risk. The stress and scenario analyses combine multiple risks and risk categories.

For the design of the analyses information is taken from the following sources:

- Subject matter experts view of the business model;
- Risk and control assessments and risk ranking;
- Risk event and near miss information;
- Emerging risks;
- Market knowledge; and
- Historic data and experience.

The analyses can be grouped in five categories as presented in the below table. For each type of test the impact is assessed in line with risk appetite. The impacted parameters can all be traced back to the profit or loss account, balance sheet or capital requirements.

Type	Explanation	Process	Frequency
Realistic Disaster Scenarios ('RDS')	Monitors in force exposures to specific event scenarios at a single point in time.	Business planning, ORSA	100% annually with a quarterly update of the most material scenarios.
Sensitivity analysis	Assessment of standardised and severe change in single or multiple parameter(s) at a single point in time.	Business planning, ORSA, Internal Model validation	Multiple times on different occasions.
Stress testing	Assessment of standardised and severe change in single or multiple parameter(s) during one year.	Business planning, ORSA, Internal Model validation	Multiple times on different occasions.
Scenario analysis	Assessment of standardised and severe change in single or multiple parameter(s) during multiple years.	Business planning, ORSA, Internal Model validation	Multiple times on different occasions.
Reverse stress testing	Single or multiple parameters to stress risk of discontinuity of business activities.	ORSA, recovery plan	Annually.

B.4 Internal Control System

B.4.1 Internal controls system

MS AISE operated a system of internal controls for the full year ended 31 December 2022.

MS AISE's Internal Control Framework is organised around the three lines model and based on a set of core principles (control environment, risk assessment, control activities, information, communication, monitoring and testing), references to MS AISE's three lines model (as explained in section B.1.1) and sets out roles and responsibilities for MS AISE staff of all levels as it relates to matters of internal control.

MS AISE's key internal control procedures comprise company level controls, IT general controls and process level controls. These include, but are not limited to, access controls, oversight controls, segregation of duties, initiation and approval controls, monitoring and oversight controls, reporting controls, reconciliation controls, as well as other controls. The effectiveness of internal controls is assured through the operation of the MS AISE three lines model.

For the year ended 31 December 2022, MS AISE's internal controls contributed to meeting various objectives, including operational effectiveness and efficiency, reliable financial reporting, compliance with laws and regulations, and management of reputational and strategic risks. MS AISE managed its internal controls on a dedicated internal controls software solution that required control operators to perform a quarterly self-assessment of the effectiveness of their controls on the system, to upload supporting evidence to the system and to submit their self-assessment to an assigned control owner for review and approval. This process was managed by a dedicated Assurance and Monitoring team within the Risk function, which was also tasked with reporting on the results of the quarterly control self-assessment cycles to the MS AISE Risk Committee. This process was further strengthened by quality assurance reviews that were carried out by the Risk Assurance team over the control self-assessments, which was done on a sample basis.

The Assurance and Monitoring team supports and challenges the first line on their management, maintenance, enhancement and remediation of key internal controls, provides internal control training to control owners and operators, and manages the quarterly internal control self-assessment process.

Other assurance providers, such as the Internal Audit, Risk and Compliance functions, contributed to the enhancement of MS AISE's Internal Control Framework through their respective assurance activities and reporting. Feedback loops between these assurance providers and the Assurance and Monitoring team have been established and were operating effectively for the year ended 31 December 2022.

J-SOX

MS&AD, the ultimate parent company, is required to comply with the requirements in the Financial Instruments and Exchange Act (known as 'J-SOX'). As MS AISE is part of the MS&AD group, it is in scope for J-SOX attestation as well.

J-SOX requires MS AISE's management to evaluate and report annually on the effectiveness of Internal Controls over Financial Reporting ('ICOFR') and to report the evaluation results in an Internal Controls report (known as management's internal J-SOX attestation) to MSI by May 2023. Management has appointed the Internal Audit function to perform an evaluation of the ICOFR and will rely on their work for the attestation.

B.4.2 Compliance function

The Compliance function operates on the basis of a Charter with a dedicated Chief Compliance Officer having responsibility for the Compliance function within MS AISE as a legal entity. The independent status of the Compliance function in MS AISE's framework is set out in MS AISE's Bylaws. Compliance representatives are present at MS AISE's head office and all larger branches of the Company. If a

Compliance representative is not based at an office location, this will be covered by an off-site Compliance employee. The Compliance function annually reviews the Compliance Management System.

The Charter sets out the Compliance function's responsibilities, reporting lines and rights to perform its duties unimpeded by management. The Charter is approved by the Risk Committee and reviewed annually. The Risk Committee approves the Compliance plan on an annual basis and enables the Compliance function to discharge their responsibilities set out in the Charter.

The Charter is supported by the Compliance strategy and describes the role of the Compliance function as being to provide assurance to the Management Committee and Board of compliance with regulatory requirements, associated laws and relevant policies. These policies are adjusted to local regulations in the countries where MS AISE operates if necessary. The Compliance function has six key responsibilities to support its objective:

- Establish – identifying stakeholders, integrity risks, determining the scope and establishing the Compliance Management System and Compliance Policy;
- Develop – identifying compliance obligations and evaluating integrity risks;
- Implement – planning to address integrity risks, achieve objectives and design and implement controls to protect MS AISE from identified risks, including awareness and training;
- Evaluate – evaluate, monitor and report on the effectiveness of these controls;
- Improve – managing compliance issues if and when they occur as well as continuous improvement;
- Maintain – advise the business on compliance, rules and controls in specific cases.

The Compliance function reports quarterly to the Risk Committee on integrity risks, regulatory breaches (if any) and compliance monitoring findings. The Compliance function reports to the MS AISE Management Committee on a monthly basis. The Chief Compliance Officer has a standing invitation to the meetings of the MS AISE Board and its committees.

Three lines model

The Compliance function forms part of a coherent set of transversal control functions, which is set out in MS AISE's three lines model. The model is explained in section B.1.1. The model explicitly defines the roles and responsibilities of all staff across MS AISE on the basis of their remit and authority. Segregation of duties is a key control within MS AISE that supports transparent governance and culture, and promotes clear accountability for activities. It is built into the Corporate Governance Framework, Organisational Structure, Key Persons Framework Design, Risk Management Framework and Internal Control Framework. In addition, all (potential) conflicts of interest are logged and monitored in the Company's Conflict of Interest Register.

Integrity risk identification and management

As part of the key responsibilities, the Compliance function periodically assesses integrity risks within the Integrity Risk Framework. The Integrity Risk Framework is part of the overall enterprise Risk Management Framework and builds on the same processes, tools and governance structure. The framework aims to provide assurance to the MS AISE statutory governing body in managing integrity risks. The framework is built on the principle that integrity risks and controls are predominately owned within/by the first line. Senior management of the first line is interviewed and involved in the assessment of integrity risks through the periodic risk reviews. The findings feed into the Compliance plan. The outcome of the periodic risk reviews and the Compliance plan are reviewed and recommended for approval to the Board by the Risk Committee.

Compliance monitoring

Compliance monitoring is carried out in accordance with a plan approved annually by the MS AISE Risk Committee. The compliance monitoring process includes both thematic reviews and periodic data analysis, with the intention of ascertaining that:

- Processes operated by first line functions servicing MS AISE, designed to achieve compliance with Group standards and underlying regulations, would be adequate to ensure compliance if followed; and
- These processes are being followed in practice by MS AISE.

The universe of issues covered by compliance monitoring is set in the Integrity Risk Framework designed to measure MS AISE's compliance with regulatory obligations. Areas covered include:

- Business integrity;
- Financial crime controls;
- Customer treatment; and
- Prudential control requirements.

Compliance Policy

The Compliance function is also responsible for the Corporate Integrity Policy and related compliance policies and standards. The Corporate Integrity policy is reviewed by the MS AISE Management Committee and recommended for approval to the Board by the MS AISE Risk Committee. The Policy articulates the roles, responsibilities and activities that staff must fulfil in relation to these policies and standards. This framework also covers MS AISE, and key policies and standards are translated for non-English speaking staff. All MS AISE staff are required to attest periodically that they have read each of the policies and standards that are relevant to their role.

Corporate Values

MS AISE adopted the corporate values of its global parent MS&AD. These values are implemented by the senior leadership team of MS AISE:

- Customer Focus – striving to provide security and satisfaction to our customers;
- Integrity – being sincere, kind, and fair in our dealings with people;
- Teamwork – growing together as a team by respecting one another's individuality and opinions and sharing knowledge and ideas;
- Innovation – always improving the way we work while responding to stakeholders' interests;
- Professionalism – providing high-quality services by constantly enhancing our skills and proficiency.

Compliance with Solvency II

In accordance with the Charter, the Compliance function has advised the MS AISE Board on a number of recommendations relating to Solvency II during 2022. These included capital management, fitness, propriety requirements for individuals, outsourcing and submissions required by the Belgian Solvency II Law and other regulatory approvals.

B.5 Internal Audit function

As from 1 January 2020, MS AISE had outsourced its Internal Audit function to MS ACS (a shared services provider to MS AISE) and subsequently to the Internal Audit team of MSI. As per the recommendation of the National Bank of Belgium, in order to increase compliance with Solvency II, the appointment of the MS AISE Head of Internal Audit was approved by the Audit Committee of 8 December 2021. As from 19 September 2022, the Solvency II key function holder for Internal Audit is the MS AISE Head of Internal Audit, overseeing and managing the Internal Audit function. Until the appointment of the Head of Internal Audit, the Solvency II key function holder for Internal Audit was the MS AISE CEO ('contact person'/'person relais').

The Head of Internal Audit attends the MS AISE Audit Committee ('MS AISE AC') and reports inter-alia, on planned audit work, recent audits completed and any other matters as directed by the MS AISE Board and/or the MS AISE AC. An annual audit plan is prepared each year during the fourth quarter, which is approved by the MS AISE AC. The audit plan includes MS AISE's marine activities being managed via the cover holder MS AM. Audits might focus on MS AISE as a legal entity, on a specific location, or on MS ACS shared services where these impact MS AISE.

The Internal Audit plan is developed using a risk-based methodology, including input from senior management and the MS AISE Board and/or the MS AISE AC. Internal Audit reviews and adjusts the plan, as necessary, in response to changes in the organisation's business, strategies, risks, operations, programmes, systems, and controls. The MS AISE Head of internal Audit communicates the impact of resource limitations and significant interim changes to the MS AISE Board and/or the MS AISE AC and other stakeholders as deemed applicable.

Internal Audit has sufficient and timely access to key management information and a right of access to all of the organisation's records, personnel, property and operations of the Company, necessary to discharge its responsibilities, with strict responsibility for safekeeping and confidentiality.

The scope of internal auditing is based on an approved audit plan and encompasses, but is not limited to, the examination and evaluation of the adequacy and effectiveness of the organisation's governance, risk management, and the internal control framework established by management, to ensure achievement of MS AISE's strategic and operational objectives. Internal Audit also examines the quality of performance in carrying out assigned responsibilities. This is achieved by:

- Effective identification, assessment and management of risk;
- Compliance with those policies, standards, procedures, laws and regulations which could have a significant impact on MS AISE's operations or reputation;
- Display of and adherence to MS AISE's values and culture;
- Safe custody of assets; and
- Effective and efficient use of resources.

There is specific emphasis on:

- The design and operational effectiveness of governance structures and control processes, including strategic and operational decision making information presented to the MS AISE Board.
- The setting of an adherence to risk appetite.
- The effectiveness of the second line with regards to its monitoring and oversight responsibilities.
- The Company's culture and management of conduct risk, including:
 - Key indicators of a sound risk culture, "tone at the top", accountability, effective communication and challenge;
 - The risk of poor customer outcomes, giving rise to reputational or conduct risk;

- High-risk key corporate events, for example significant business process changes, the introduction of new products and services, outsourcing decisions and acquisitions/divestments.

The key responsibilities of Internal Audit are to:

- Develop and maintain a risk-based audit plan that takes account of emerging risks, significant corporate events, strategic changes, regulatory themes and areas of control concerns;
- Review the plan on a continuous basis and propose additions, cancellations and deferrals to the Audit Committee for approval on a quarterly basis;
- Provide reasonable assurance as to the adequacy and effectiveness of the Internal Control Framework in operation throughout the Company by ensuring there is appropriate audit coverage across all areas;
- Report the results of internal audit activity, significant control issues identified, progress in delivering the audit plan and status of management remediation activities;
- Establish and deliver a programme of quality assurance activities to confirm that expected internal audit standards are being met and to report the results to the Audit Committee annually;
- Manage the function to ensure that audit staff have appropriate knowledge, skills, qualifications and experience to deliver the proposed plan of work;
- Provide active support to the MS AISE Board and line management in the promotion of high standards of internal control;
- Assist and advise management on the prevention of fraud and defalcations;
- Work with the MS AISE Legal team to play a leading role in the investigation of internal fraud; and
- Support the Speak Up Committee in discharging its responsibility.

In the provision of assurance, Internal Audit will ordinarily provide an opinion on the strength of the control framework in operation within the subject area covered by an audit. Internal Audit may also be asked by management to assist with the design of control processes or to complete other work, including work of an investigatory nature. Such work will not be accepted if doing so significantly impairs Internal Audit's ability to deliver on its primary objectives.

The MS AISE Audit Committee:

- Approves the Internal Audit Charter;
- Approves the risk-based Internal Audit plan;
- Approves the Internal Audit budget;
- Approves decisions regarding the appointment and removal of the Head of Internal Audit, in consultation with MSI Internal Audit ('MSI IA');
- Evaluates the performance of the Internal Audit function on a regular basis;
- Makes appropriate inquiries of management and the Internal Audit function to determine whether there is an inappropriate scope or resource limitations.

Approvals above are required annually except for the approval of the Internal Audit Charter as such approvals are only required when it is revised. Internal Audit has the right to attend and observe all or part of the MS AISE Board meetings, MS AISE Management Committee meetings and any other key management decision making fora. The Head of Internal Audit operates at a sufficiently senior level within the organisation to provide the appropriate standing, access and authority.

B.6 Actuarial function

The Actuarial function provides an independent opinion to the MS AISE Management Committee and Board on the Solvency II technical provisions, the reinsurance policy and the underwriting policy. Additionally, review of the Solvency Capital Requirement (both standard formula and Internal Model) and credit risk are included in its remit. To ensure the independent position, the Actuarial function directly reports to the MS AISE Chief Risk Officer and is not involved in first line activities.

The first line actuarial activities are picked up by the following teams:

- **Reserving team:** the calculation of and reporting on the IFRS/BEGAAP reserves and the Solvency II technical provisions are performed on a quarterly basis, including additional analysis like back testing. The team reports directly to the Chief Financial Officer of MS AISE. For P&C the reserving classes are treated and discussed per country, for marine the focus is on reserving classes. All results and reports are discussed with the key stakeholders, such as the Management Committee of the legal entity, claim handlers, underwriters and finance departments.

The Actuarial function holder reviews the activities of the reserving team, and shares his view directly with the team in the reserving meetings and to the Audit Committee. Any conclusions will be summarised in the relevant Actuarial function report.

- **Central reserving team:** the central reserving team, employed by sister entity MS ACS, provides oversight and peer review of the reserving process for Group reporting purposes.

The Actuarial function holder uses the findings of the central team when forming an opinion on the output of the reserving team.

- **Capital modelling team:** the capital modelling team calculates the Solvency II standard formula SCR, handles all process involving the Internal Model and interprets the results. The team uses the Internal Model to provide insight in specifics items like the margin setting, the business planning and determination of strategic targets for the loss ratios. This Internal Model has not yet been approved by the regulators. The capital modelling team reports to the MS AISE CFO.

The Actuarial function holder verifies the capital calculations, and provides insight in the potential developments, risks and opportunities thereof.

- **Technical pricing team:** the technical pricing team is responsible for designing and maintaining the technical pricing models which are used by the underwriters to set the policy premiums. The technical pricing team reports to the MS AISE CUO P&C.

The Actuarial function holder reviews the sufficiency of the pricing and the use of the models by the underwriters.

The second line activities entail the following, next to the responsibilities described above:

- Review the planning and coordination of the calculation of the IFRS and BEGAAP reserves and the Solvency II technical provisions. This is done in close cooperation with the Finance reporting team, which is responsible for the delivery of all regulatory reports.
- Review the calculations, methodologies and assumptions of the IFRS and BEGAAP reserves (including the equalisation reserve) and technical provisions, for gross and reinsurance. The risks and uncertainties of those results are determined, and an opinion on the quality of the data is formed. Special attention is also given to the overall efficiency of the process, since this could limit the available time for quality control and the implementation of improvements. The Actuarial function will make sure this review is shared before the numbers are finalised, so any conclusion can be incorporated in the submitted regulatory reports. The conclusions will also be shared in

the Actuarial function report on the technical provisions, including suggested actions for further improvement of the process.

- Providing advice on the various options and the potential impact thereof in the reinsurance programme, especially when the programme is being negotiated for the next year. The base for these discussions will be incorporated in the Actuarial function report on reinsurance.
- Monitoring and reporting on the credit risk, whether it is coming from reinsurers, fronting business, captives or brokers. This includes approval of individual counterparties, and providing guidance on this topic for the relevant first line teams.
- Determine the sufficiency of the premium setting, considering effects like market trends and anti-selection in the portfolio. This is primarily done by reviewing the business plan, including the underwriting actions contained therein (prospective), and the reserving results and class performance (retrospective). Expert Risk Reviews are set up to provide in-depth feedback on the underwriting processes. New products are evaluated to make sure these will contribute to long term profitability, whether any specific issues are present in the risk selection, and whether the impact on capital is within limits. Options and guarantees in the (re)insurance are not written by MS AISE, and therefore not a concern. Any conclusions will be shared directly with the relevant stakeholders and included in the Actuarial function report on underwriting.
- Validate the capital models, being the regulatory standard formula or the Internal Model, and provide advice to management which improvements should be made. This includes reviewing the completeness and consistency of the model, the statistical soundness, the data quality of the inputs, the available documentation and the quality of the expert judgments.
- Any other activities, including contributing to the ORSA report.

The second line Actuarial function has a charter/terms of reference, which includes the following:

- The place of the Actuarial function within the organisation, including the authority, the reporting lines and an organogram;
- How the independence of the Actuarial function is guaranteed, by direct access to the Board, a remuneration independent of the direct responsibilities, appropriate resources and information, and limiting the options to remove the function from its responsibilities;
- The scope/activities of the function, including a detailed description of the responsibilities for the reserving process, the Solvency II technical provisions, the reinsurance and technical pricing/underwriting;
- The responsibilities of the Management Committee;
- The reporting obligations (regulatory or otherwise).

The Actuarial function consists of the function holder, who is knowledgeable on the relevant actuarial techniques and the wider organisation. The function holder is assisted by two team members, who will focus on underwriting, reinsurance/credit risk and review/validation of the capital calculations. There is close cooperation with the other control functions.

The charter/terms of reference will be evaluated once per year, or when the circumstances dictate more often. The Actuarial function proposes changes hereto (if any), which must be approved by the Risk Committee.

B.7 Outsourcing

B.7.1 Description of the outsourcing policy

External outsourcing

Outsourcing of critical or important functions and activities

The MS AISE Outsourcing Policy and Outsourcing Standard documents (together the 'Policy') outline the approach and regulatory requirements to be considered to both the third party service provider selection and the management of outsourcing agreements. The Policy applies to all new and existing outsourcing agreements.

MS AISE has outsourced the provision of certain critical or important operational functions and activities which are listed in subsection B.7.2 of this report. Material outsourcing refers to outsourcing of a 'critical or important' operational function of, or for, MS AISE. The test as to what is 'critical or important' is if any defect or failure in the outsourcing performance would materially impair the Company's:

- Continued compliance in accordance with the terms of its authorisation;
- Other obligations under its regulatory system;
- Financial performance; and
- Soundness or continuity of its services and operations.

The following functions will not be considered as critical or important for the purposes of outsourcing:

- Provision of advisory services, and other services which do not form part of the core services and activities of MS AISE, including the provision of legal advice, the training of personnel, billing services and the security of premises and personnel;
- Purchase of standardised services, including market information services and the provision of price feeds.

Policy requirements

The policy requirements are set to undertake the outsourcing of critical or important operational functions and activities in such a way as to:

- Assure the quality of MS AISE's internal controls;
- Assure the quality, confidentiality and control of services provided to the clients;
- Enable the appropriate regulator to monitor MS AISE's compliance with all obligations under the regulatory system;
- Conduct an appropriate level of due diligence on the supplier of the services outsourced to assure the provision of the services on an ongoing basis;
- Conduct the minimum standards of due diligence for material outsourcing as defined in the Policy applicable to MS AISE;
- Record material outsourcing on a register maintained by the Procurement function;
- Ensure robust due diligence is undertaken and that there is an appropriate level of internal challenge and approval prior to the ultimate decision for the outsourcing to proceed;
- Inform the Chief Compliance Officer for guidance on regulatory communications prior to entering into a material outsourcing arrangement;
- Notify the relevant regulators of any new material outsourcing or any material changes to existing material outsourcing agreements;

- Utilise the Procurement function to support the commercial and contracting discussions prior to entering into or materially amending an outsourcing agreement;
- Ensure an acceptable level of rigour and governance is maintained for the oversight, relationship management and risk management of the outsourced service and its suppliers to ensure that the interests and assets of MS AISE and its policyholders remain protected.

Implementation, monitoring and management of the outsourcing

MS AISE is responsible for implementing, monitoring and managing the outsourcing arrangements on an ongoing basis to ensure the quality and efficiency of the outsourced services or functions. This is assured by:

- The reporting on an agreed basis and in an agreed manner sufficient to meet the Company's responsibilities;
- A register kept of all MS AISE's material outsourcing arrangements and the supported entities for each agreement, which is provided to the Procurement function at least annually;
- The right from the compliance or internal audit teams to audit the monitoring and management processes of critical or important outsourcing providers;
- The appointment of a functional head or similar grade for each material outsourcing agreement, who retains responsibility for ensuring all regulatory responsibilities are met by the supplier;
- Agreeing the Terms of Reference for the implementation, monitoring and management of the relationship and performance of the service provider.

Expected or unexpected termination and other service interruptions

MS AISE has contingencies in place for dealing with expected or unexpected service interruptions from its outsourcing arrangements and requires service providers to have adequate contingency plans to deal with emergency situations or business disruptions. MS AISE has a Business Continuity Management Policy and Business Continuity Management Standard which is also applicable for all material outsourcing agreements.

Renewing outsourcing agreements

Outsourcing agreements may run for a fixed term and be renewable or may be operated on a continuous basis. MS AISE has processes in place to:

- Review the financial health, business continuity plans and exit plans of MS AISE's critical and important outsource providers;
- Review the appropriateness of written agreements (both term-based and continuous) at the point of renewal or, at least, not less frequently than every two years; and
- Report any issues identified or encountered appropriately to the Board.

Outsourcing of underwriting and claims activities

Material outsourcing parties for underwriting and claims activities are monitored and managed through the Binder Control Framework, with data exchange, audits, market scans and delegated authorities.

Intra-group outsourcing

Investments activities

The Company had an agreement in place with MSI sister entity – MS Amlin Corporate Services Limited ('MS ACS') – for the provision of investment services during reporting year 2022, including cash management activities. Pursuant to its Investment Governance Framework, the Company has invested the majority of its investment assets (€1,219.6 million out of €1,696.3 million) with the Toro Prism Trust (the 'Trust'). The Trust has other investors from within the MSI Group only. The Trust has been authorised by the Central Bank of Ireland as an undertaking for collective investment in transferable

securities pursuant to the European Communities - Undertakings for Collective Investment in Transferable Securities - Regulations 2011. The Trust is managed by a third-party fund management company, Carne Global Fund Managers (Ireland) Limited ('Carne').

Carne has appointed a fellow MSI sister entity, MS Amlin Investment Management Limited ('MS AIML') as the Headline Portfolio Manager of the Trust. MS AIML has been authorised and is regulated by the Financial Conduct Authority and as an investment firm subject to the Markets in Financial Instruments Directive 2014/65/EU ('MiFID'). MS AIML delegates the day-to-day portfolio management of the pools of assets within the Trust's sub-funds to external third-party investment managers.

MS AISE also invests into a hedge fund through administrator JP Morgan Hedge Fund Services Ireland and managed by BlueBay Asset Management LLP. The market value of this fund amounts to €34.3 million. In addition to these investment activities, the Company has engaged Veritas Asset Management LLP and CBRE Global Collective Investors UK Limited to manage €122.0 million and €117.0 million of its assets respectively.

During reporting year 2022, MS AISE has invested into a new segregated bond mandate that is being managed by Aegon Asset Management UK plc covering €195.1 million of the Company's assets. Aegon Asset Management has been authorised and is regulated by the Financial Conduct Authority and as an investment firm subject to the Markets in Financial Instruments Directive 2014/65/EU ('MiFID').

Centralised support functions

MS ACS provides services from its personnel to MS AISE and other MSI Group companies with appropriate skills and qualifications. MS ACS as a legal entity does not provide any professional or regulated services itself.

The individuals employed by MS ACS provide services to MS AISE under the direction and supervision of the MS AISE Management Committee and Board either directly or through the centralised service functions by MS ACS, and these individuals are accountable to the entities. MS ACS has contracted with MS AISE to deliver suitably qualified personnel, and the service levels to be delivered by the personnel supplied are agreed on a case-by-case basis as appropriate. During 2022, the quality of the services delivered was monitored both at MS ACS level as well as at MS AISE level through the MS AISE Operations Committee and performance information provided to the MS AISE Board and Management Committee. The SLAs are accompanied by a Master Services Agreement (intra-group), that provides the overall contractual framework for the outsourcing relationship.

As from 1 January 2022, a new service agreement has been in place between MS AISE and the shared service centre MS ACS. This is underpinned by the service catalogues that have been reviewed and agreed between MS AISE and MS ACS. These catalogues include KPIs and reporting requirements. The cost allocation for 2022 from MS ACS to MS AISE was agreed as part of the business planning process.

B.7.2 Outsourced key functions or activities and their local jurisdiction

MS AISE is currently utilising several service providers for the outsourcing of certain critical or important operational functions or activities on its behalf. Details of the outsourced key functions, activities and the jurisdiction are provided below:

Description of outsourced key functions or activities	Jurisdiction
External outsourcing	
Delegated underwriting activity for certain products in all business lines	Belgium, the Netherlands, France, United Kingdom
Global real estate investment manager	United Kingdom
Hedge fund investment manager	United Kingdom
Corporate bond investment manager	United Kingdom
End-to-end claims outsource for motor and fire insurance	Belgium, United Kingdom

IT infrastructure provider for hosting managed network, workplace and service desk services	United Kingdom
Loan market association transaction services	United Kingdom
Catastrophe modelling analytical services	United Kingdom

Internal outsourcing

MS Amlin Marine service provider acting as delegated underwriting authority for marine products	The Netherlands
MS ACS as headline investment portfolio manager	United Kingdom
MS ACS providing personnel, IT and infrastructure services	United Kingdom
MS ACS providing information security and risk management operations services	United Kingdom

The table does not include external investment managers to which MS AIML delegates the day-to-day management of asset pools in the Trust's sub funds.

B.8 Any other information

All material information relating to the Company's systems of governance has been disclosed in sub-sections B.1 to B.7 above.

Section C - Risk Profile

Section C presents MS AISE's risk profile in accordance with MS AISE's Risk Management Framework which identifies the following risk categories: insurance, market, credit, liquidity, operational and strategic. For each risk category there is an individual section which explains:

- Risk definition and appetite statements;
- Material risk concentrations;
- Risk exposure (including off-balance sheet positions);
- Measures used to assess these risks;
- Outcomes of stress, scenario and sensitivity testing; and
- Risk mitigation techniques used (including a description of monitoring activities).

The description includes exposures at year-end as well as developments in exposure during the year. The tables and diagrams contain MS AISE specific data unless otherwise stated. Besides the risk categories in MS AISE's Risk Management Framework, no other risk categories have been identified. Strategic risk is explained in the other risk section.

Risk appetite statements

Risk appetite statements in the document follow a standard categorisation as set out below:

- Risk seeking (grow) – These are risks where the Company will seek to increase exposure in the pursuit of fulfilling strategic objectives, knowing there are rewards associated with taking on the risk;
- Risk seeking (maintain) – These are risks the Company will continue to seek as part of the business strategy, maintaining a level of risk relatively consistent with current exposures;
- Risk neutral – These are risks the Company will accept with caution, as by-products of pursuing risk, knowing there may be some negative impact necessary in the pursuit of strategic objectives. There is no desire for unnecessary additional exposure and strong control is expected to manage exposure within acceptable limits;
- Risk averse – These are risks the Company has no desire to accept on the basis they should be wholly manageable and have no material contribution to the fulfilment of strategic objectives.

Methods and assumptions used for measuring exposures and concentrations, and sensitivity analyses are applicable to multiple risk categories. Therefore this introduction presents the methods and assumptions used. The actual exposures and concentrations, and outcomes of sensitivity analyses are presented in subsections per risk category.

Exposures and concentrations

As referred to in section B.3, in addition to the standard formula, MS AISE measures the Company's exposures and concentrations through the use of a stochastic Internal Model. The outcome of the Internal Model is an internal capital measure per risk category and an overall capital measure. The Internal Model aggregates exposures considering the reduction impact of the associated mitigation strategies. Modelled exposures are monitored quarterly and reported to MS AISE's Risk Committee where management actions are concluded if necessary. The presented exposures and concentrations in this section are based on the Internal Model. Furthermore, deterministic in force exposure figures are used in addition to modelled recoveries output from the Internal Model and presented in this document where applicable.

Risk mitigation

For each category of risk there are mitigation techniques in place as presented in the subsections. These techniques are unique for every category, but do follow a standardised pattern. For each category at least the following measures are in place:

- Policies, procedures and standards;
- Tolerance, limit setting and performance monitoring;

- Stochastic modelling;
- Scenario analysis; and an
- Internal Control Framework.

C.1 Insurance risk

MS AISE defines insurance risk as the risk of loss arising from the inherent uncertainties in the occurrence, amount and timing of insurance liabilities and premiums. This includes reserving risk or claims arising on business written prior to the year in question. The scope of insurance risk includes underwriting, catastrophe, reserving, claims and the mitigation effect of reinsurance (excluding reinsurance credit risk).

C.1.1 Risk definition and appetite

Insurance risk consists of two core components, namely underwriting risk and reserving risk.

Underwriting risk

Underwriting risk relates to risk from both expected and unexpected attritional and large losses, which can be caused by inadequate pricing, terms and conditions and/or unexpected claims frequency, and catastrophe losses from large natural or non-elemental events such as earthquake, hurricane or terrorism threats.

MS AISE has a positive, risk seeking appetite towards underwriting risk and actively seeks to balance the Company's underwriting exposures by writing a diverse risk portfolio which is made up of several business classes. There is an inherent risk of insurance losses associated with these exposures. The appetite for underwriting risk is governed by the amount of business that meets the pricing requirements and fits the Company's overall strategy for profitable growth but also by the risk bearing capacity determined by the capital base and outwards reinsurance arrangements.

Reserving risk

Reserving risk relates to the possible inadequacy of claims provisions. Specifically, it relates to the uncertainty that reserves (technical provisions under Solvency II) are adequately accounted for, taking account of fluctuations in claim settlements.

MS AISE has adopted a risk neutral approach to reserving risk, which is a consequence of underwriting a business portfolio where claims may develop after the policy period has elapsed. MS AISE's appetite is governed by a policy which ensures that reserves are carried above the actuarial best estimate of future outcomes by adding a risk management margin under IFRS and BEGAAP principles. Classes of business which have a higher level of uncertainty of potential development will naturally carry a higher level of reserve provision. MS AISE does not discount reserves to take account of the investment return generated by premium or reserves held for future claims payments. Furthermore, the Company takes consideration of likely cash flow requirements when investing carried reserves to reduce asset-liability miss matching.

C.1.2 Underwriting risk

Concentration and exposure

MS AISE has a portfolio of property, casualty, motor and marine insurance that has exposure to non-elemental perils such as industrial accidents as well as weather and earthquake exposures. Primary underwriting risk concentration is derived from:

- Natural perils such as windstorm, flood, fire and earthquake;
- Large loss man-made events such as terrorism, cyber, industrial accidents (e.g. oil spills);
- Large risks such as shipyards and construction; and
- Correlated liability coverage such as professional liability for medical practice.

Similar to prior years, underwriting risk is dominated by property classes which tend to have bigger exposures with regard to line size. These are also exposed to accumulations from catastrophes, and the reinsurance retentions for these classes are higher than the liability classes so that more risk is retained on a net basis.

Scenario, stress and sensitivity testing

Specific sensitivity analyses performed for underwriting risk are, on the one hand, Realistic Disaster Scenarios and, on the other hand, stress and sensitivity testing.

Realistic Disaster Scenarios ('RDS')

The table below presents the results from the RDS analysis with the largest exposures as of 1 January 2022 and 2023. Data is presented including reinsurance recoveries and reinstatement premiums (net losses). Exposures as per 1 January are used to reflect positions against the reinsurance programme for the coming year.

Event	Jan 2023 €'000	Event	Jan 2022 €'000
EU Cyber Blackout	35,402	EU Cyber Blackout	34,450
EU Windstorm – UK Europe	34,606	EU Windstorm – UK Europe	23,777
EU Windstorm – France, Belgium, Netherlands	33,537	EU Windstorm – France, Belgium, Netherlands	23,451
EU Windstorm – Bordeaux Munich	28,662	EU Windstorm – Bordeaux Munich	23,307
US Windstorm - North East - Two Events	10,997	US Windstorm - North East - Two Events	13,499

The table above shows an approximate standalone impact from various events on profitability. Changes in exposure compared to prior year are generally driven by a combination of changes in gross exposure in underlying classes, better data capture and changes in reinsurance programmes.

It should be noted that the RDS analysis does not consider the potential for any additional reserve releases or other management actions that may be applied in the ordinary course of business leading up to or following an event.

Stress testing and sensitivity analysis

MS AISE has a suite of stress tests used for model validation, challenging business planning assumptions, shaping tolerances and to assess capital adequacy. The following selection of tests has been made from the tests completed in relation to underwriting risk.

Nr. Sensitivity test	Impact on available capital €'000	Impact on SCR €'000	Impact on Solvency Ratio %
Base solvency position per 31 December 2022	758,003	475,622	159.4%
1 5% more net claims incurred during 2023, across all classes, compared to plan	(18,520)	8,651	(6.7%)
2 5% less gross premium received during 2023 compared to plan	(29,663)	(5,845)	(4.3%)
3 10% less gross premium received during 2023, in Marine class, compared to plan	(5,111)	(1,483)	(0.6%)
4 2% deterioration in net loss ratio during 2023, due to catastrophe event, compared to plan	(7,408)	-	(1.6%)
5 10% less reinsurance recoveries received during 2023, across all classes, compared to plan	(5,299)	25,946	(9.3%)
6 10% more ceded reinsurance premium during 2023, across all classes, compared to plan	(8,617)	(842)	(1.5%)

Seven tests have been selected to shock the underwriting risk exposures based on projected 2023 underwriting results in the business plan for written premium and catastrophe losses. The selected tests aim to assess the resilience of the Company's capital coverage. All the stress test scenarios generate a Solvency Ratio above 145% which provides comfort that the underwriting strategy is aligned with the Company's risk appetite. The highest impact on the Solvency Ratio is presented under the fifth scenario, which is primarily driven by increasing catastrophe exposures as a result of lower reinsurance coverage.

The results of the RDS and stress tests are compared with MS AISE's risk appetite and operating capital target as outlined in MS AISE's Capital Management Policy. On a continuous basis MS AISE's capital position is monitored and compared to predefined trigger levels including required management responses.

Management, mitigation and monitoring techniques

In addition to the risk management process outlined in section B.3.1, this section discloses management and mitigation techniques in relation to underwriting risk. Monitoring results are reported to MS AISE's Risk Committee on a quarterly basis.

- *Strategy and business planning* – As part of business planning, strategy is elaborated into plans for the coming year. In these annual plans resources are directed to those businesses which create the most desirable expected loss costs and ultimate loss ratios during the underwriting year. The goal is to realise profitable growth;
- *Policies, procedures and standards* – The Underwriting Policy and Philosophy, as owned by the first line, and Insurance Risk Standard assure consistency across underwriting and related control activities;
- *Tolerance, limit setting and performance monitoring* – Strategy is aligned to a risk appetite and tolerances. For every insured class there is a maximum line size, exposure, and monitoring programme (using stochastic modelling). Furthermore, there are underwriting authority limits and guidelines for individual underwriters in place;
- *Reinsurance* – A key instrument for risk mitigation of insurance risk is the use of reinsurance facilities;
- *Technical pricing and modelling* – Technical pricing takes account of hazards so premiums are adequate. Furthermore, stochastic modelling is used to estimate exposures to assure sufficiency of the best estimate and for price setting;
- *Underwriting control framework* – This framework consists of 16 standards with 20 key underwriting controls which are being performed locally and attested to quarterly. Furthermore, work continues to be ongoing to review and improve the underwriting framework, control environment and exposure monitoring.

C.1.3 Reserving risk

Concentration and exposure

Reserving risk concentrations are the accumulation of assumed claims and the uncertainty associated with the ultimate size of the claims, given the extended duration it can take for some claims to mature. As a result of its long tail nature, MS AISE's portfolio of casualty classes dominates the reserving risk profile.

MS AISE operates an actuarial led reserving process to estimate the reserves on a best estimate basis. Reserving risk exposures and concentrations are identified through the use of the Internal Model. Exposures are modelled using volatility around the amount of reported best estimates. The following table presents MS AISE's five largest reserving exposures as per year-end 2021 and 2022.

2022 rank	Class	2021 rank	Class
1	NL Liability – General Third Party Liability	1	NL Liability – General Third Party Liability
2	BE Liability – Non-Medical	2	BE Liability – Medical
3	BE Liability – Medical	3	BE Liability – Non-Medical
4	NL Fleet – Liability Binder	4	NL Fleet – Liability Binder
5	Marine – Ocean Hull	5	Marine – Builders Risk

Primary classes driving exposure is casualty due to the longer term in which claims are settled compared to the property business. Compared to last year the ranking has remained stable. It is worth noting that the 2022 risk ranking is based on allocated SCR which aligns with the metrics considered.

Key drivers for reserve risk during the reporting period have been the development of natural catastrophes, claims relating to the Ukraine-Russia war and high inflation rates resulting in additional reserve increases.

Scenario, stress and sensitivity testing

For reserving risk stress and sensitivity analysis are performed. The following selection of tests has been made from the tests completed in relation to reserving risk:

Nr. Sensitivity test	Impact on available capital	Impact on SCR	Impact on Solvency Ratio
	€'000	€'000	%
Base solvency position per 31 December 2022	758,003	475,622	159.4%
1 10% deterioration in net loss ratio during 2023, for Fleet class, compared to plan	(11,700)	3,239	(3.5%)
2 Systematic ransomware attack impacting 10% of policyholders	(6,914)	8,124	(4.1%)

The stress tests confirm the financial resilience of the Company under the different scenarios impacting reserving levels. The results of the scenario analyses are compared with MS AISE's risk appetite and operating capital target as outlined in MS AISE's Capital Management Policy. On a continuous basis MS AISE's capital position is monitored and compared to predefined trigger levels including required management responses.

Management, mitigation and monitoring techniques

In addition to the risk management process outlined in section B.3.1, this section presents management and mitigation techniques in relation to reserving risk. Monitoring results of reserving risk are reported to MS AISE's Risk Committee and Audit Committee on a quarterly basis.

- *Process and governance* – MS AISE operates a consistent, actuarially driven process quarterly to assess that appropriate level of reserves are carried, taking account of the characteristics and risks of each business class, to arrive at a best estimate. The best estimates are reviewed by members of the Management Committee and the MS AISE Audit Committee on behalf of the MS AISE Board;
- *Policies and procedures* – Consistent claims processes and accurate case reserve setting aims to ensure that an adequate provision is established for advised claims;
- *Tolerance setting and monitoring* – A tolerance is set for reserving as the minimum probability of carried reserves being in excess of liabilities for at least 65%. This sufficiency of reserves is monitored on a quarterly basis via the Internal Model;
- *Risk margin* – An additional margin is proposed by management which aims to reflect the level of underlying risk and to achieve the required tolerance level to determine the carried reserves;
- *Reinsurance* – The reinsurance programme responds to large loss developments from prior years.

C.2 Market risk

Market risk is defined as risk arising from fluctuations in values of, or income from, investment assets, interest rates, currency exchange rates and market prices. MS AISE seeks to optimise its risk adjusted investment return whilst focusing on ensuring it maintains sufficient capital to meet solvency requirements and maintain sufficient liquid funds to meet liabilities when they fall due. Exposure to market risk is therefore limited to the extent that investment strategies are balanced by these primary objectives.

In addition to the description of market risk, this section explains how MS AISE adheres to the prudent person principle.

C.2.1 Risk definition and appetite

Market risk is divided into three subcategories, namely investment market volatility, foreign exchange and investment counterparty risk.

Investment market volatility risk

This is the risk of loss resulting from fluctuations or volatility of investment assets and in the value of financial securities, either directly or indirectly. MS AISE has a cautious risk seeking (maintain) attitude to investment market volatility risk. The Company has multi-asset risk exposures and manages the risk according to an annual Value-at-Risk ('VaR') tolerance¹. The potential drawdown characteristics of equity exposures are further limited through the implementation of the equity hedge programme ('EHP') which is a systematic stop-loss programme. Investments are limited by the liquidity requirements of meeting claims as these become payable.

Foreign exchange risk

Foreign exchange risk is the impact on the value of balance sheet items or earnings arising from movements in the exchange rate of the euro against other currencies. MS AISE has a risk neutral appetite to currency risk. The Company is exposed to currency risk by virtue of holding balance sheet assets, investment funds, premiums and liabilities in foreign currencies.

Investment counterparty risk

There is a risk of loss to MS AISE due to a change in the value of assets resulting from investment counterparties default, credit rating downgrade or a change in spread over the risk-free rate accounted for the counterparties. MS AISE has a risk seeking (maintain) appetite for investment counterparty credit risk as part of market risk. The Company manages the counterparty exposures by monitoring the concentration of assets against grade/quality exposure limits, which are designed to maintain a level of diversification in the asset portfolio.

C.2.2 Prudent person principle

The prudent person principle provides guidelines for undertakings about how to manage investment strategy. Undertakings should only conduct investment management activities as long as it can be reasonably demonstrated that there is an appropriate level of understanding of the underlying investment (i.e. the ability to look through into individual positions), are able to monitor their investments (counterparty monitoring) and can justify their investments as prudent to policyholders.

MS AIML is responsible for the day-to-day management of MS AISE's investments and operates within the MS AISE Investment Governance Framework and Investment Guidelines. MS AIML only invests in

¹ MS AIML uses VaR below expected return as standard VaR measure.

assets and instruments whose risks can be identified, measured, monitored, managed, controlled and reported.

MS AISE's policyholder assets (backing technical provisions) are managed against a low appetite for risk, with assets held in funds which invest in money market funds and a mix of bonds, derivatives and currencies. The management of policyholder funds is aligned with the prudent person principle.

C.2.3 Investment market volatility risk

Concentration and exposure

Market concentration risk can result from having too much exposure in a single asset class, currency, political domicile or counterparty. Concentration risk is managed by ensuring MS AISE's portfolio is well-diversified across multiple asset classes and multiple regions. It is managed to tolerances that prohibit excessive market and credit risk concentrations.

MS AISE's asset allocation as at 31 December 2022 and 2021 is presented below as a percentage of asset under management ('AUM'). Allocations are largely held through the Company's investment in the Toro Prism Trust. This is an open-ended investment unit trust authorised by the Central Bank of Ireland as a UCITS (Undertakings for Collective Investment in Transferable Securities) regulated by the European Union.

	2022		2021	
	€'000	%	€'000	%
Collective investment undertakings (excl. property)*	1,253,901	71%	1,225,170	80%
Property*	116,951	7%	111,031	7%
Equities*	122,029	7%	141,919	9%
Corporate bonds*	195,053	11%	-	0%
Derivatives*	8,390	0%	2,862	0%
Cash and deposits	66,366	4%	59,950	4%
Total assets invested	1,762,690	100%	1,540,931	100%

* These items are presented together under the line Investments (incl. participations) in the Solvency II assets table under section D.1 of this report.

Exposure is assessed using the stochastic VaR statistic at a 99.5% confidence interval and is reported on a monthly basis. This VaR is measured against a maximum tolerance of 7.0% and exposure remained below tolerance throughout the year.

Stress, scenario and sensitivity testing

Scenario analysis is performed for investment market volatility risk. The following selection of tests has been made:

Nr. Sensitivity test	Impact on available capital	Impact on SCR	Impact on Solvency Ratio
	€'000	€'000	%
Base solvency position per 31 December 2022	758,003	475,622	159.4%
1 2% increase in risk-free interest rates during 2023	50,465	(4,538)	12.2%
2 1% decrease in risk-free interest rates during 2023	(25,312)	2,805	(6.2%)
3 20% decrease in market value of equity and property investments	(28,813)	(3,883)	(4.8%)

The second scenario presents the most negative impact on the Solvency Ratio, primarily driven by the lower discounting benefit to the technical provisions. The results of the analyses are compared with MS AISE's risk appetite and operating capital target as outlined in MS AISE's Capital Management Policy. Based on these analyses current capital position is considered adequate. On a continuous basis MS

AISE's capital position is monitored and compared to predefined trigger levels including required management responses.

Management, mitigation and monitoring techniques

In addition to the risk management process outlined in section B.3, this section presents management and mitigation techniques in relation to investment market volatility risk. Monitoring results are reported to MS AISE's Risk Committee on a quarterly basis.

- *Strategic asset allocation* – Investment opportunities are evaluated taking into consideration risk and reward, liquidity and effects on capital in relation to solvency requirements;
- *Policies, procedures and standards* – The investment policy aims to maximise risk-adjusted investment return in relation to an agreed risk budget;
- *Tolerance, limit setting and performance monitoring* – Investment strategy is aligned to risk appetite, tolerances and indicators. For every asset class there is a maximum exposure and monitoring programme;
- *Stochastic VaR monitoring* – Exposure is assessed using a stochastic model at confidence levels of 99% (one month) and 99.5% (one year);
- *Scenario and stress tests* – Stress and scenario tests are performed outside of the Stochastic VaR monitoring to provide alternate portfolio losses in a variety of stressed circumstances;
- *Sub-advisor monitoring* – A spread of sub-advisors is appointed to carry out asset selection within specialized asset classes. Each sub-advisor has discretion to manage the funds on a day-to-day basis within the Investment Guidelines or Mandates. These are designed to ensure that investments comply with the Investment Frameworks.

C.2.4 Foreign exchange risk

Concentration and exposure

MS AISE is exposed to the fluctuations in the exchange rates of currencies. Besides euro (EUR) denominated exposures, MS AISE holds material exposures in US dollars (USD) and British pound sterling (GBP).

The next table presents the 31 December 2021 and 2022 exposures in USD and GBP (presented in EUR amounts). The total balance sheet is based on Solvency II valuation methods. The increase in USD denominated assets and reduction in liabilities is due to movements on the gross and reinsurance technical provisions as well as insurance receivables. The increase in GBP assets is primarily driven by more financial assets compared to prior year following higher GBP denominated securities in the Toro Prism Trust. The reduction in GBP denominated liabilities follows the variation of the technical provisions.

Value by currency ('000)	2022			2021		
	Total (EUR)	USD	GBP	Total (EUR)	USD	GBP
Total assets	2,055,235	102,549	88,259	1,814,105	88,208	80,711
Total liabilities	1,299,718	84,581	63,978	1,229,056	94,110	95,633

In addition to the exposures on the balance sheet, on a look-through basis, MS AISE holds the Lilac (money market fund) and Blue (bond fund) Toro Prism Trust share classes in multiple currencies, with the aggregated exposures contributing significantly to the required capital for market risk.

Stress, scenario and sensitivity testing

For foreign exchange risk no stand-alone sensitivity analyses are being performed. These form part of the wider market risk stress tests in which MS AIML stresses multiple factors using a range of scenarios (like repeat financial crisis, strong inflation, etc.).

Management, mitigation and monitoring techniques

In addition to the risk management process outlined in section B.3.1, this section presents management and mitigation techniques in relation to foreign exchange risk. Monitoring results are reported to MS AISE's Risk Committee on a quarterly basis.

- *Hedging* – Currency exposures in the investment portfolio are hedged by using derivatives for key currencies (EUR, USD and GBP);
- *Asset-liability matching* – To help manage currency risk on the balance sheet a proportion of the assets are matched to the Company's liabilities.

C.2.5 Investment counterparty risk

Concentration and exposure

Risk concentration can occur due to an accumulation of MS AISE owned assets with a limited number of counterparties. The investment guidelines are designed to mitigate credit risk by ensuring diversification of the holdings. For each portfolio there are limits to the exposure to single issuers and to the total amount that can be held in each credit quality rating category, as determined by reference to credit rating agencies. MS AISE is exposed to counterparty risk primarily through the investment in the Toro Prism Trust.

Limits for government bonds and non-government bond exposures are a percentage of assets under management. Each limit is a subset of the limit exceeding it, e.g. a limit applies of 30% across all exposures with credit rating BBB and below. Of the 30%, there is a maximum of 7.5% for exposures with a rating below BBB. For single issuer exposures, there are no limits for government holdings with credit rating AA and AAA.

Stress, scenario and sensitivity testing

Scenario analysis is performed for investment counterparty risk. The following selection of tests has been made:

Nr. Sensitivity test	Impact on available capital	Impact on SCR	Impact on Solvency Ratio
	€'000	€'000	%
Base solvency position per 31 December 2022	758,003	475,622	159.4%
1 50% increase in spread of fixed income assets compared to risk-free rate	(27,702)	11,502	(9.4%)
2 Credit quality step downgrade for cash and derivative counterparties	-	40,014	(12.4%)

The scenario where the credit quality step of all cash and derivatives counterparties is downgraded provides the highest shock to the Solvency Ratio, which is mainly driven by the large cash exposures within the investments look through data.

The results of the scenario analyses are compared with MS AISE's risk appetite and operating capital range as outlined in MS AISE's Capital Management Policy. On a continuous basis MS AISE's capital position is monitored and compared to predefined trigger levels including required management responses.

Management, mitigation and monitoring techniques

In addition to the risk management process outlined in section B.3, this section presents management and mitigation techniques in relation to investment counterparty risk. Monitoring results are reported to MS AISE's Risk Committee on a quarterly basis.

- *Counterparty on-boarding* – Due diligence processes exist to pre-vet any counterparties before being on-boarded;
- *External credit ratings* – MS AISE uses ratings from multiple credit rating agencies, such as Standard & Poor and AM Best;

- *Credit rating limits* – Investment counterparty exposure is managed through limits over exposure based upon credit ratings;
- *Creditworthiness monitoring* – Is conducted by MS AIML for all institutions MS AISE transacts with, both current and potential. A summary is sent to the Investment Management and Compliance functions;
- *Investment Counterparty Management* – The custodians of MS AISE's investment assets are contractually bound to hold all assets specifically on behalf of MS AISE and not in their own right.

C.3 Credit risk

MS AISE defines credit risk as the risk of loss, resulting from deterioration in the financial condition of insurance and reinsurance counterparties (reinsurers and retrocessionaires, insured and reinsured clients, cover holders, brokers). Credit risk could therefore have an impact upon MS AISE's ability to meet claims and other obligations as they fall due and upon the investment return.

C.3.1 Risk definition and appetite

Credit risk is divided into three subcategories, i.e. reinsurance credit risk, broker credit risk and investment counterparty risk. Investment counterparties (e.g. treasury intermediaries) have a high proximity to market risk. Therefore, exposure to investment counterparties is described within the market risk section.

Reinsurance credit risk

Reinsurance credit risk is the risk of loss resulting from deterioration in the financial condition of reinsurers and retrocessionaires. MS AISE has a risk neutral attitude to reinsurance credit risk. The Company recognises the need to accept some reinsurance counterparty credit risk as a result of using risk capacity and providing protection for large losses and severe catastrophe events. The Company aims to limit credit risk in relation to reinsurer balances and potential recoveries by establishing limits for the extent to which such assets could become uncollectible in the event of insolvency or impairment.

Broker and cover holder credit risk

MS AISE defines broker and cover holder credit risk as the risk of loss resulting from deterioration in the financial condition of insured and reinsured clients, cover holders and brokers. MS AISE has a risk neutral attitude to intermediary credit risk. MS AISE recognises that brokers need to collect both premiums and claims as part of their services. The Company aims to limit credit risk in relation to debtor balances by establishing limits for the extent to which such assets could become uncollectible in the event of insolvency or impairment.

C.3.2 Reinsurance credit risk

Concentration and exposure

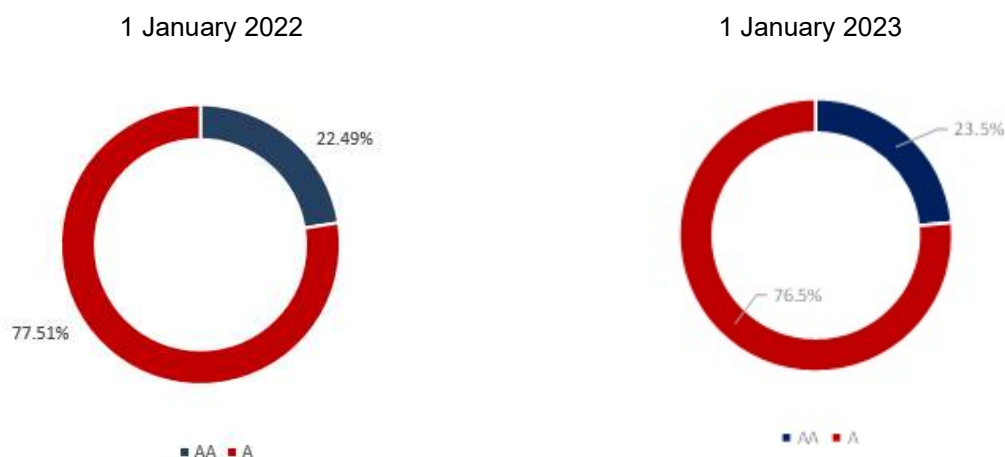
Reinsurance credit risk includes both reinsurers' share of outstanding claims, as well as amounts expected to be recovered on unpaid outstanding claims (including incurred but not reported claims) in respect of earned risks. Reinsurance recoverables by external credit rating according to Standards & Poor's, based on Solvency II valuation principles, due at 31 December 2021 and 2022 are shown in the table below.

Reinsurance recoverables	2022		2021	
	€'000	%	€'000	%
AA	84,543	47.2%	82,999	52.1%
A	55,473	30.9%	41,176	25.8%
BBB	30,801	17.2%	2,029	1.3%
Other	8,420	4.7%	33,118	20.8%
Total	179,237	100.0%	159,322	100.0%

There are tolerances applicable for each reinsurer reflecting an approximation capital charge based on a single loss and the financial strength credit ratings, assigned by external credit rating agencies such as Standard & Poor and AM Best. The internal MS AISE credit rating is used in case of non-rated counterparties, where such rating is derived from the latest available solvency ratio.

The applied limit per reinsurer is the aggregate exposure across all programmes written. The exposure of the reinsurer, who participates in a current reinsurance programme, is frequently monitored by the MS AISE Actuarial Function team.

The chart below shows in force reinsurance aggregate exposure (assuming one total loss for each contract written) across the excess of loss treaty programmes protecting MS AISE with effect from 1 January 2022 and 2023, broken down by financial strength rating. Exposures as per 1 January are used to reflect positions against the reinsurance programme for the coming year.



Collateralised reinsurance

This has not been applicable to MS AISE to date and is not expected to be a feature over the business planning period.

Use of external credit ratings

Information from external credit rating agencies is used on a quarterly basis to determine the credit risk of MS AISE, for reporting to the Counterparty Security Committee. The Actuarial Function also monitors the internal MS AISE credit ratings provided to reinsurance counterparties which participate in the reinsurance programme.

Stress, scenario and sensitivity testing

Scenario analysis is performed for reinsurance credit risk. The following selection of tests has been made:

Nr. Sensitivity test	Impact on available capital	Impact on SCR	Impact on Solvency Ratio
	€'000	€'000	%
Base solvency position per 31 December 2022	758,003	475,622	159.4%
1 One credit quality step downgrade for all reinsurance counterparties	-	5,581	(1.8%)

The probability of default for a reinsurer reduces the credit quality, resulting in a higher capital requirement of €5.6 million and a limited decrease of the Solvency Ratio by 1.8%.

Reinsurance credit risk is considered in applicable stress and scenario tests conducted for purposes of business planning, risk appetite development and validation of the Internal Model.

The quarterly deterministic RDS process provides a regular opportunity to monitor potential for single event clashes between programmes written by a single reinsurer. RDSs consider the impact of a wide range of first and second events in peak peril regions. There were no breaches of reinsurer single event tolerances during 2022. The assumptions used within the RDS process include a provision for reinsurance credit risk based on each reinsurer's credit rating.

The results of the sensitivity analyses are compared with MS AISE's risk appetite and operating capital range as outlined in MS AISE's Capital Management Policy. Based on these analyses no additional measures are required.

Management, mitigation and monitoring techniques

In addition to the risk management process outlined in section B.3, this section presents management and mitigation techniques in relation to reinsurance credit risk. Monitoring results are reported to MS AISE's Risk Committee on a quarterly basis.

- *Accreditation* – A Counterparty Approval tool is used for reinsurer accreditation, approval for the engagement of new reinsurers and review of existing reinsurers;
- *Fronting* – Approval of fronting local policies for members of the INI, Globex or other networks is also handled by the Counterparty Approval tool;
- *Policies, procedures and standards* – Procedures for the approval of new reinsurers, review of existing reinsurers and use of unapproved reinsurers on an exception basis are set out in the Counterparty Security Standard;
- *Tolerance, limit setting and performance monitoring* – Within the framework of the Counterparty Security Committee, the Company seeks to manage and monitor exposures to reinsurance companies by setting risk tolerances and indicators across the risk category;
- *Stochastic modelling* – Is utilised to report on modelled reinsurance recoveries;
- *Reinsurer review process* – Considers the aggregate capital of each reinsurer across all programmes written, which is incorporated in the Counterparty Approval database. Monitoring results are reported to the Counterparty Security Committee on a quarterly basis;
- *Debt control* – Reinsurance debt credit control is carried out to limit outstanding balances owed by counterparties. Credit risk is controlled by applying maximum in force exposure limits applicable to each reinsurer, linked to their ability and willingness to pay claims;
- *Cross entity cost sharing and loss usage* – There is a protocol for cross entity (including MS AISE) cost sharing and loss usage considering the allocation of reinsurance credit cost and losses;
- *Claims management* – MS AISE's claims end-to-end process is designed to pursue and secure claims recoveries in an efficient manner.

C.3.3 Broker and cover holder credit risk

Exposure and concentrations

The table below presents the breakdown at 31 December 2021 and 2022 of insurance receivables by rating according to external credit agencies. The table includes credit risk exposures to brokers, cover holders and policyholders.

Insurance receivables	2022		2021	
	€'000	%	€'000	%
A	152,178	44.5%	154,943	47.9%
Other	190,177	55.5%	168,240	52.1%
Total	342,355	100.0%	323,183	100.0%

Broker credit risk is managed through several controls and internal reporting, including broker approval, annual financial review, assessment of the internal rating of brokers and regular monitoring of premium settlement performance.

Cover holder credit risk is also managed through several controls and internal reporting, including cover holder approval, assessment of the internal rating of cover holders and regular monitoring of open

positions and payment behaviour. Furthermore, there are annual financial monitoring controls in place which measure the cover holder's solvency ratio and current account balances.

Stress, scenario and sensitivity testing

No sensitivity analyses are performed for broker and cover holder credit risk. After managing the Company's exposures to brokers and cover holders via the debt control process, the residual risk is not considered significant.

Management, mitigation and monitoring techniques

In addition to the risk management process outlined in section B.3.1, this section presents management and mitigation techniques in relation to broker and cover holder credit risk.

In case of irregularities or issues noted for specific counterparties, a mitigation process is in place to handle and minimize the risk. This process includes all the corresponding parties such as the Finance team, the Sales team (for brokers) and the Delegated Authority team (for cover holders).

The process of risk mitigation is similar for brokers and cover holders. Monitoring results are reported to MS AISE's Risk Committee on a quarterly basis.

- **On-boarding**
 - The Sales team is responsible for broker accreditation and on-boarding (approval of new brokers);
 - The Delegated Authority team is responsible for the cover holder accreditation and on-boarding (approval of new cover holders);
- **Policies, procedures and standards** – For both brokers and cover holders, policies and standards are in place to explain the process of on-boarding, credit review, debt control and claims management;
- **Tolerance, limit setting and performance monitoring** – For both brokers and cover holders, the Company seeks to manage and monitor exposures by a number of risk tolerances and limits across the risk category;
- **Debt control** – For both brokers and cover holders, the timely and correct settlement is monitored on a daily basis by the Credit Control team within Finance. Monitoring results (aging debt and unmatched cash) are reported on a quarterly basis during a Business Review meeting;
- **Claims management** – MS AISE's claims management process is designed to pursue and secure claims recoveries in an efficient manner for both brokers and cover holders.

C.4 Liquidity risk

Liquidity risk refers to the risk that sufficient financial resources are not available to meet liabilities as they fall due. That is, the risk that cash is not available to pay claims or other key financial commitments. In addition to the description of liquidity risk, this section presents the impact of expected profits in future premiums.

C.4.1 Risk definition and appetite

The scope of liquidity risk includes managing unexpected changes in funding sources, market conditions and cash flow planning incorporating asset-liability management. MS AISE has a risk averse attitude to liquidity risk and seeks to avoid any situation where funds are not available to meet claims as required because this would have significant reputational and regulatory impact. The Company recognises that it has the obligation to pay claims promptly and that this could result in heavy cash flow demands in the event of catastrophe claims. MS AISE ensures the availability of sufficient funds to cover any claims from such events and the combination of other adverse circumstances which may give rise to short term cash requirements in excess of MS AISE's available liquid funds. It should be noted that MS AISE is ultimately backed by the financial security of the MS&AD Group.

C.4.2 Concentration and exposure

Responsibility for cash management and the allocation of assets to ensure appropriate liquidity is delegated to MS AIML. MS AISE therefore aims to ensure the investment portfolios are sufficiently liquid to allow liabilities to be settled. The prudent person principle, as described in paragraph C.2.2, is applicable to managing liquidity risk.

Liquidity risk concentration can develop as a result of combined correlative exposure to underwriting perils that can result in significant claims occurring concurrently. The strength and liquidity of the balance sheet is fundamental to the Company's proposition as an insurer of choice, providing us with the ability to respond quickly to claims. This is particularly relevant in the event of large losses such as European windstorms. Liquidity risk can result from having concentrations in financial assets which cannot be monetised quickly.

MS AISE periodically monitors the liquidity ratio as part of the risk appetite monitoring process. The ratio as at year-end 2022 is well above the tolerance of 100% at 312%. There are no issues to report in relation to the overall liquidity risk profile.

It is important that MS AISE can pay obligations as they fall due. Levels of cash are therefore managed on a daily basis and buffers of liquid assets are held in excess of the immediate requirements. This is to reduce the risk of being a forced seller of any of MS AISE's assets, which may result in realising prices below fair value, especially in periods of abnormal asset liquidity.

C.4.3 Sensitivity analysis

The Lilac (money market fund) and Blue (bond fund) share classes held in the Toro Prism Trust are inherently liquid and can usually be liquidated within two days. The Company also monitors the level of High Quality Liquid Assets ('HQLA'), which are calculated by applying Basel II regulatory haircuts, against Solvency Capital Requirements. The results indicate that MS AISE is well funded and positioned to handle multiple loss events before liquidity could become an issue.

C.4.4 Management, mitigation and monitoring techniques

Management and mitigation of liquidity risk is done via cash management and liquidity ratio monitoring:

- The rapid collection of reinsurance recoveries following settlement of major claims is a key priority within cash management;

- Liquidity ratio monitoring is done to assess if MS AISE can meet its liabilities in a stressed liquidity environment.

C.4.5 Impact of expected profit in future premiums ('EPIFP')

Any profits expected from premiums that have not yet been invoiced but are expected in future periods are utilised in business planning and amounted to €152.3 million as at 31 December 2022 (2021: €173.8 million) on future expected premiums of €643.1 million (2021: €598.1 million).

Management is aware of the risk of falling short of either the expected profits or the level of future expected premiums, both of which can contribute to liquidity risk if large enough. MS AISE's capital position is strong and liquid enough to absorb shocks of this magnitude. No material liquidity issues are expected to arise if the level of profits from expected future premiums is not met.

C.5 Operational risk

MS AISE operates a diverse business across several offices and jurisdictions and is expected to comply with legal, regulatory and best-practice standards. The risk of execution arises from a failure of critical business processes, people or systems resulting in an interruption to normal operations. Operational risk excludes strategic and reputational risk.

C.5.1 Risk definition and appetite

Operational risk is divided into eight subcategories, namely 1) people risk, 2) systems, technology, cyber and information security risk, 3) expense risk, 4) legal and regulatory risk, 5) business interruption, safety and security risk, 6) outsourcing risk, 7) data governance risk, 8) financial reporting risk, 9) capital management risk and 10) project risk. Besides these subcategories operational risks within other risk categories are also taken into account.

MS AISE has a risk averse appetite for operational risk across all categories. MS AISE does not wish to have any operational failures which may hinder trading, result in financial loss or any regulatory sanction for inadequate compliance. It is recognised, however, that achieving complete certainty of such failures not occurring would entail an unacceptable cost.

People risk

The Company has no appetite to compromise the ability to service existing policyholders to their expected level of service as well as the underwriting of new business that relies on the experience and expertise of senior underwriters, claims managers and support staff. Continuity of senior management is considered as integral to the development and execution of strategy and ongoing sustainability of relationships with key stakeholders mentioned earlier.

Systems, technology, cyber and information security risk

The Company does not wish to have any systems, technology or cyber and information security failures which may materially hinder trading, result in financial loss, or regulatory sanction. The Board recognises that there is a requirement for some risk acceptance relating to minor system, technology, cyber and information security issues.

Expense risk

The Company adopts a risk neutral approach to deviations from the operating costs as annually determined through underwriting expenses and other operating expenses in the business plan. It is recognised that it in order to meet strategic objectives and/or due to exceptional circumstances it can be necessary to increase expenses.

Legal and regulatory risk

The Company has a risk averse appetite for failures to operate within applicable legal and regulatory requirements. There is also a risk averse appetite for illegal activities or internal risks arising from deliberate actions, for example fraud or inappropriate conduct.

Business, safety and security interruption risk

The Company recognises that business operations are at risk from threats such as natural and man-made disasters, terrorism, pandemics or cyber-attacks. A range of measures to control, transfer and mitigate risk are taken including maintaining robust business continuity arrangements. Business Continuity management arrangements are focused on protecting what are deemed to be business critical activities, by the process owner, from suffering severe interruption. Severe interruption is gauged by the business process owner through the completion of the Business Continuity lifecycle activities and by reference to impact on revenue, customer service, reputation and regulatory compliance as well as any inter-dependencies on other business processes. These are risks the Company has no desire to accept

as these should be adequately manageable and have no material contribution to the fulfilment of strategic objectives.

Outsourcing risk

MS AISE has no appetite for having losses arising from actions of third party service providers or intra-group outsourcing arrangements where there is no ability to influence the service provider's actions.

Data governance risk

The Company creates, acquires and makes use of a wide variety of data to support business decisions, services to clients and reporting to regulators. It recognises that much of this data is critical to the Company's operations and that there is significant risk to profitability and reputation where it is found to be of poor quality. There is no appetite for data risk where quality criteria, defined for critical data elements, are not met.

Financial reporting risk

The Company produces multiple external financial reports and has a risk averse appetite for misstatements in external financial reporting, including tax declarations, or not meeting regulatory deadlines. Misstatements or late reporting could result in reputational damage as well as regulatory sanctions and/or fines which the Company is not willing to accept.

Capital management risk

From a capital management perspective a risk neutral risk appetite is to be adopted. This is driven by the adoption of a risk averse appetite for key risks associated with capital management, such as liquidity, legal and regulatory risk. This is counterbalanced by the need to maintain risk seeking appetites in other key areas such as underwriting and strategic risk. Thus, there is a requirement to hold sufficient capital in order to support risk taking, within appropriate limits.

Project risk

There is a risk of failure for delivering the agreed projects portfolio in line with the standards set out in the Change Delivery Framework, for example on time, within budget, within scope and agreeing with intended benefits. This may result in the Company not meeting its strategic objectives due to misdirected investments, incurring unnecessary costs, non-compliance with regulatory requirements or preventing the business from exploiting market opportunities. These risks should be adequately manageable and materialisation of these risks has no contribution to the fulfilment of strategic objectives.

Operational resilience and information security

In addition to evaluating risk drivers via the Internal Model, there is a periodic engagement process with the relevant stakeholders for analysing operational risk from a more qualitative perspective. This resulted in attention for other operational risks related to the implementation of GDPR requirements, improving the IT infrastructure and people risk. These analyses concluded that MS AISE's systems and process landscape requires further modernisation and digitalisation in order to make processes more efficient.

Process for preparing contingency plans

A Business Continuity Management policy is in place. Each department is required to develop and maintain a Business Impact Analysis and Risk Assessment, the tools used for the identification and assessment of the departmental criticality and the impact of its loss.

Where the Business Impact Analysis indicated that critical business activities take place, the department shall be required to develop and maintain a Business Continuity Plan which contains the documentation used to manage the continuation of critical business area processes at the time of an incident. The department will also have to test and exercise the plan.

C.5.2 Stress and sensitivity analysis

Periodic risk reviews, including a review of the risk events, seek to identify and review management actions to mitigate exposure and to strengthen the control environment. In addition, operational stress tests are carried out, among others office outages, crisis management simulations, breach of competition law and cyber-attacks to test the operational resilience and measure the control strengths. Where possible historic internal or external events are utilised to build these simulations.

The state of the control framework and operational stress tests are used to compare with the operational risk charge and the impact of operational risks on the total SCR. Based on these analyses the current capital is considered adequate.

On a continuous basis MS AISE's capital position is monitored and compared to predefined trigger levels including required management responses.

C.5.3 Management, mitigation and monitoring techniques

In addition to the risk management process outlined in section B.3, this section presents management and mitigation techniques in relation to operational risks. Monitoring results are reported to MS AISE's Risk Committee on a quarterly basis.

- *Policies, procedures and standards* – The Operational Risk Standard ensures all significant operational risks are identified, assessed, evaluated, managed, monitored and reported in a consistent manner across the organisation. The JSOX and Internal Control Framework explain the standards required for the ownership, operation and performance of internal controls. Besides these standards there are policies in place for managing business continuity, data quality, information security, outsourcing, and procurement;
- *Tolerance setting* – Strategy is aligned to the risk appetite, tolerances and limits. Tolerances and limits monitor the scale of operational losses versus modelled operational risk measures calculated in the annual SCR, as well as the adequacy of the mitigation strategies via the Internal Control Framework. Finally, monitoring of risk treatment plans is factored into tolerance monitoring;
- *Risk Management Framework* – The implementation of a framework for the identification, assessment and control of operational risks ensures that operational risks are understood and managed by relevant functions/operating segments;
- *Internal Control* – Effectiveness of managing operational risk is measured via the Internal Control Framework. This framework measures operation of key controls in day-to-day operations;
- *Risk assessments* – The identified risks are assessed via periodic risk discussions with relevant stakeholders and via thematic deep-dive assessments. For identified risks remediation actions are identified and monitored, such as the IT strategy aimed at simplifying and modernising the IT landscape and Cyber Security strategy targeted at improving cyber resilience;
- *Risk events and near misses* – Are reported to raise awareness and identify areas for improvement. MS AISE's risk appetite is used as the basis for evaluating risk events;
- *Scenario analyses* – Are used to determine the level of regulatory and economic capital required to support the level of operational risk within the Company;
- *Insurance coverage* – MS AISE purchases insurance protection to cover property damage, liability, cyber risk, errors and omissions and fraud. These insurances are purchased directly or centrally within the MSI group for MS AISE.

C.6 Other risks

MS AISE identifies strategic risks as input for the other risks section. Besides the risk categories in MS AISE's Risk Management Framework no other risk categories have been identified.

Strategic risk

MS AISE has a strategy setting process in place to respond effectively to changes in the internal and external environment. The Board is closely involved in the strategy setting process. The aim of the process is to identify impending changes that could compromise the business model in the long term and to identify opportunities for growth through organic expansion and acquisition where market conditions allow. Once change and/or acquisition targets are secured, change resources are assigned to deliver the necessary objectives.

This section explains risk concentration and exposure and concludes with a description of mitigation techniques. In this section no outcomes of sensitivity analyses are provided. Sensitivity analyses can all be grouped to one of the other risk categories as described in this chapter.

C.6.1 Risk definition and appetite

Strategic risks are defined as risks to current and prospective earnings or capital arising from adverse business decisions, improper implementation of decisions or lack of responsiveness to industry changes. These include risks associated with the appropriateness of business strategy in the face of the current and future commercial, geopolitical, legislative and economic environment.

MS AISE has a risk seeking (maintain) attitude to strategic risk as it actively pursues ways of developing the business model. MS AISE also faces a number of external factors which may impact demand for or supply of our products. These risks are analysed and actions are agreed to adapt the strategic approach to cater for them.

C.6.2 Concentration and exposure

MS AISE sees strategic risk concentration from several factors explained below.

Developments in relation to strategic objectives

The development of strategic objectives is carried out by MS AISE senior executives and through the decisions of the MS AISE Board. The strategy is fundamental to the development of MS AISE's market share, brand, reputation, underwriting aims and the fulfilment of the expectations of its parent and other interested parties such as policyholders, rating agencies and regulators.

Geopolitical and economic factors

MS AISE is exposed to geopolitical uncertainty and resulting instability that could affect the delivery of MS AISE's strategy and/or the provision of its products and services. This could crystallise as a result of political decisions, events or conditions.

Drivers for political and economic risk are political and economic protectionist movements, Chinese cyber-attacks and industrial espionage.

Strategic Group risk

MS AISE is a subsidiary of the MS&AD Group and there is a risk that losses in other Group companies may impact the ability of MS AISE to execute its strategy, especially if the impact is upon the Group's capital management strategy and limits options to recapitalise in the event of a material capital reduction. Other examples include Group's influence over entities' strategy, potentially clashing with the fulfilment of local strategy.

Whilst MS AISE accepts that these risks are pertinent to the sector and local jurisdiction, it is necessary to understand the risk and manage the potential impact where possible.

C.6.3 Scenario analysis and reverse stress testing

At a strategic level scenario analysis and reverse stress testing are used to evaluate the financial robustness of MS AISE in extreme circumstances. These assessments are performed as part of the Business Plan risk assessment and ORSA process of which outcomes are reported to the regulator.

The scenario testing is performed over a three year business planning horizon with multiple losses against the business plan assumptions. The scenarios consider major catastrophe losses, reserve releases, an investment loss and a change in business mix. Outcomes are analysed to conclude on potential mitigating actions.

Reverse stress testing is performed to assess scenarios and circumstances that would render MS AISE's business model unviable, thereby identifying potential business vulnerabilities. These tests consider qualitative parameters like data quality, process inefficiencies, project overload and quantifiable market stresses and severe business plan breaches.

The results of the scenario analysis and reverse stress testing are compared with MS AISE's risk appetite and operating capital range as outlined in MS AISE's Capital Management Policy. Based on these analyses the current capital position is considered adequate.

C.6.4 Management, mitigation and monitoring techniques

In addition to the risk management process outlined in section B.3, this section presents management and mitigation techniques in relation to strategic risk. Monitoring results are reported to MS AISE's Risk Committee on a quarterly basis.

- *Group Strategy Alignment* – MS AISE's strategic objectives and decisions also include consider the strategy requirements of the MS&AD Group, including capital needs, regulatory requirements and risks;
- *Culture* – MS AISE's culture and strategic objectives take account of customer needs and expectations;
- *Strategy commitment* – There is resource commitment to support the duration of the executed strategy and strategies have flexible re-directive decision points in their plan;
- *Market monitoring* – Horizon scanning of external factors often takes place, decisions take account of current and longer term market movements;
- *Governed decision making* – Strategic risks are assessed taking account of all requirements while risk acceptance is undertaken within a controlled manner considering capital constraints and the cost of capital;
- *Capital management* – Aggregate risk exposure is continuously monitored against available capital, and action is taken where solvency ratios are deemed unacceptable. Contingency and resilience plans are developed to manage adverse capital events;
- *Stress testing* – Business plans are thoroughly considered and reviewed against the potential impact of external factors and developments;
- *Merger & Acquisition risk assessments* – Due diligence and risk assessment processes are conducted for acquisitions.

C.7 Any other information

All material information relating to the Company's risk profile has been disclosed in sub-sections C.1 to C.6 above.

Section D - Valuation for Solvency Purposes

D.1 Assets

D.1.1 Solvency II valuation method and differences compared to BEGAAP and IFRS per material asset class

		Reported under BEAAP	IFRS adjustment	Reported under IFRS	SII reclass	SII valuation adjustment	SII balance sheet 2022	SII balance sheet 2021
	Note	€'000	€'000	€'000	€'000	€'000	€'000	€'000
Cash and cash equivalents	1	66,265	(161)	66,105	261	-	66,366	59,950
Investments (incl. participations)	2	1,623,414	71,325	1,694,738	1,586	-	1,696,324	1,480,981
Reinsurers' recoverables	3	348,465	5,101	353,566	-	(174,328)	179,237	159,322
Insurance, reinsurance and intermediaries receivables	4	404,554	(45,580)	358,974	-	(328,476)	30,498	35,297
Receivables (trade, not insurance)	5	59,910	(4,668)	55,242	(1,416)	(1,981)	51,845	47,986
Deferred acquisition costs	6	-	65,703	65,703	-	(65,703)	-	-
Deferred tax asset	7	-	14,127	14,127	-	1,894	16,021	16,142
Property, plant & equipment held for own use	8	2,847	12,097	14,944	-	-	14,944	14,426
Goodwill and intangible assets	9	12,570	23,293	35,862	-	(35,862)	-	-
Total Assets		2,518,024	141,237	2,659,260	431	(604,456)	2,055,235	1,814,105
Total Liabilities		2,041,457	(86,319)	1,955,137	431	(655,851)	1,299,718	1,229,056
Excess of Assets over Liabilities		476,567	227,556	704,122	-	51,395	755,517	585,049

The above table shows the reclassification of assets from BEGAAP to IFRS and from IFRS to Solvency II presentation. For the SII adjustments, a distinction is made between IFRS to SII reclassifications as well as SII valuation adjustments as at 31 December 2022. The 2021 Solvency II balance sheet has been included for comparative purposes.

The breakdown into asset classes in the above table is less granular than the S.02.01 balance sheet QRT, as presented in the annex. This has been done to allow a clearer understanding of the valuation differences.

BEAAP to IFRS adjustments

The BEAAP to IFRS adjustments per asset class are highlighted below, while the IFRS to SII adjustments are discussed in the remainder of this section.

1. Cash and cash equivalents

There is no valuation difference on the cash and cash equivalents between IFRS and BEAAP. However, there is a slight presentation difference related to the transit account for processing and matching of executed payments. The transit account is presented as insurance and reinsurance receivables under BEAAP while it has been included as part of the cash position for IFRS reporting purposes.

2. Investments (incl. participations)

Investments are recognised at fair value under IFRS, while for BEAAP purposes financial assets are valued at historical cost value less impairment and allowance for bad debt. Therefore, the fair value adjustments are added to the balance sheet. Any currency exchange differences recognised on the fair value adjustments are to be included on the balance sheet as well.

3. Reinsurance recoverables

On the BEGAAP balance sheet reinsurance recoverables represent the reinsurers' share of the provision for outstanding claims and unearned premiums. The reinsurers' share of the provision for unearned premiums, according to BEGAAP, is calculated on the reinsurance premiums less commission expenses for acquisition. Under IFRS, however, this is not the case and the reinsurance commission expenses for acquisition are not subtracted from the reinsurance premiums. Therefore, the netting with reinsurer's share of acquisition expenses has to be reversed and the expenses are added to the provision for unearned premiums when adjusting from BEGAAP to IFRS.

The remainder of the IFRS-BEGAAP restatement is driven by a valuation difference on the reinsurance margin held within the technical provisions.

4. Insurance, reinsurance and intermediaries receivables

There is no difference on the valuation of insurance, reinsurance and intermediaries receivables between IFRS and BEGAAP. The BEGAAP-IFRS restatement, presented above, relates to the reclassification of certain recourse items from the assets side of the balance sheet to technical provisions presented as liabilities.

5. Receivables (trade, not insurance)

Receivables (trade, not insurance) include prepayments, sundry debtors and other receivables. The BEGAAP-IFRS restatement, primarily relates to the presentation of claims recoveries from the Belgian regional governments. Belgian insurance entities can recuperate claims settlements for natural catastrophes from the government once the total indemnity payments passes a certain threshold. These recoveries are presented as other receivables on the BEGAAP balance sheet and increasing the technical provisions presented as liabilities.

6. Deferred acquisition costs

Acquisition costs comprise commission expenses for acquisition incurred on insurance contracts written during the financial year.

Under BEGAAP, as mentioned above, these commission expenses are netted with the provision for unearned premiums. Therefore, deferred acquisition costs are presented at zero in the BEGAAP balance sheet.

7. Deferred tax assets

According to BEGAAP principles, deferred tax is not recognised except for government investment grants and disposal of fixed assets. As MS AISE does not have any qualifying deferred tax items, the positions are valued at zero on the balance sheet.

8. Property, plant and equipment held for own use

Property and equipment are the physical assets utilised by the Company to carry out business activities and generate revenues and profits. For MS AISE, it consists of the following:

- Fixtures and fittings;
- Computer equipment; and
- Lease properties.

The IFRS 16 standard determines the valuation and handling of lease contracts. The lease property recognised on the IFRS balance sheet is in accordance with this standard. Under BEGAAP, however, IFRS 16 is not being recognised, which explains the restatement from BEGAAP to IFRS of €12.1 million for lease assets.

9. Goodwill and intangible assets

According to BEGAAP, goodwill is to be amortised over its useful life where under IFRS amortisation is not allowed. Therefore, the amortisations on goodwill have to be reversed from BEGAAP to IFRS standards.

Solvency II reclassification of IFRS balances

For Solvency II reporting purposes there are several reclassifications with the IFRS balance sheet. These reclassifications are presentational in nature, thus do not impact the excess of assets over liabilities balance. These have been summarised in the below table and major reclassifications are further explained after.

	Reported under IFRS	SII re-class	IFRS represented
	€'000	€'000	€'000
Cash and cash equivalents	66,105	261	66,366
Investments (incl. participations)	1,694,738	1,586	1,696,324
Receivables (trade, not insurance)	55,242	(1,416)	53,826
Payables (trade, not insurance)	(87,622)	(102)	(87,724)
Derivative liabilities	(5,879)	(431)	(6,310)
Subordinated liabilities	(2,588)	102	(2,486)
Total	1,719,996	(0)	1,719,996

The major reclassification can be identified on investments. There is a receivable of €1.4 million related to accrued interest on corporate bonds which is considered as part of receivables (trade, not insurance) valuation under IFRS, while it is classified as Investments (incl. participations) on the Solvency II balance sheet in line with Solvency II guidance.

A minor reclassification item is highlighted on the payables (trade, not insurance) and subordinated liabilities due to presentation of accrued interest for the subordinated debt. According to the Solvency II Directive, accrued interest is not to be included in subordinated liabilities as these are classified as Tier 2 own funds. For more details on the subordinated liabilities, reference is made to section D.3 Other liabilities.

Solvency II valuation adjustments

In order to arrive at the Solvency II balance sheet, the following valuation adjustments to the IFRS balances are required:

- Derecognition of deferred acquisition costs, goodwill and intangible assets, as well as certain prepayment assets;
- Conversion of IFRS best estimate net insurance liabilities and net future receivables to Solvency II technical provisions standards;
- Recalculation of net deferred tax assets to consider impact of above valuation changes.

Set out in the remainder of this section are the Solvency II valuation principles for material asset classes with a comparison to the corresponding IFRS valuation principles, if different.

1. Cash and cash equivalents

Cash and cash equivalents are defined differently under IFRS than Solvency II. Under IFRS, cash equivalents include short term, highly liquid investments which are believed to be subject to an insignificant risk of changes in value. For Solvency II reporting, cash equivalents are defined as deposits exchangeable for currency on demand at par and which are directly usable for making payments by cheque, draft, giro order, direct debit/credit, or other direct payment facility, without penalty or restriction.

The different definitions have resulted in re-classifications of IFRS cash equivalents to different asset categories for Solvency II reporting. Cash and cash equivalents are valued at fair value under both Solvency II and IFRS.

2. Investments (incl. participations)

Investments are recognised at fair value both under Solvency II and IFRS. Therefore, no valuation differences exist for investments. There were no significant changes to the valuation techniques during the year.

MS AISE currently classifies all its investment securities as fair value through profit or loss. Management determines the classification of its investment securities at initial recognition. MS AISE's investment assets designated at fair value through profit or loss amounted to €1,696.3 million (2021: €1,481.0 million). Hence, the IFRS value is considered a suitable approximation of the Solvency II fair value requirement.

Note that MS AISE's investment in the Trust is structured into 3 sub-funds, i.e. the Blue, Emerald and Lilac fund. The Company has assessed for each of these whether MS AISE should recognise its investment as a participation in line with the requirements of the Solvency II Directive. The Company has a share of 8.3%, 6.8% and 53.9% respectively in the funds under management, and so the Lilac fund must be considered as a participation. The net investment value must be presented as 'Holdings in related undertakings, including participations' in the S.02.01 QRT. The other Trust funds are disclosed as 'Collective Investments Undertakings'. The investment in the Trust is described further in the Collective investment undertakings paragraph below.

Fair Value Hierarchy

For Solvency II reporting purposes, MS AISE classified its investments (incl. participations) into the three Solvency II levels of fair value hierarchy as follows:

Quoted market prices – Quoted prices (unadjusted) in active markets for identical assets or liabilities. An active market is a market where transactions for the asset occur with sufficient frequency and volume to provide readily and regularly available quoted prices.

Adjusted quoted market prices – Where the use of quoted market prices in active markets for the same assets or liabilities is not possible, the Company will value assets and liabilities using quoted market prices in active markets for similar assets and liabilities with adjustments to reflect differences. Those adjustments reflect specific and relevant factors such as:

- (a) the condition or location of the asset or liability;
- (b) the extent to which inputs relate to items that are comparable to the asset or liability; and
- (c) the volume or level of activity in the markets where the inputs are observed.

Alternative valuation methods – Inputs to a valuation model for the assets or liabilities that are not based on observable market data (unobservable inputs) and are significant to the overall fair value measurement. Unobservable inputs may have been used to measure fair value to the extent that observable inputs are not available, thereby allowing for situations in which there is little, if any, market activity for the assets or liabilities at the measurement date (or market information for the inputs to any valuation model). As such, unobservable inputs reflect the assumptions that market participants would use in pricing the assets.

At the reporting date, MS AISE's Investments (including participations) classified by hierarchy is as follows:

Investments classification under Solvency II	Quoted market prices	Adjusted quoted market prices	Alternative valuation methods	Total
	€'000	€'000	€'000	€'000
Holdings in related undertakings, including participations	577,837	-	-	577,837
Collective investment undertakings	641,772	-	151,243	793,015
Equities	122,029	-	-	122,029
Corporate bonds	-	195,053	-	195,053
Derivative assets	7,543	847	-	8,390
Total investments	1,349,181	195,900	151,243	1,696,324

Furthermore, MS AISE has derivative financial instruments amounting to €6.3 million included in other liabilities. Of this amount €5.5 million categorised within quoted market prices and €0.8 million as adjusted quoted market prices under Solvency II and disclosed in section D.3 of this report.

Collective investment undertakings

Collective investment undertakings and participations include MS AISE's investment in the Trust of €1,219.6 million, a managed fund co-invested into with other MSI companies. This fund represents an Irish domiciled UCITS-vehicle, which is structured into 3 sub-funds, a fixed income securities fund (Blue), a liquidity fund (Lilac) and an equity securities fund (Emerald). The investment shares in the funds are valued using quoted market prices for the same assets.

The collective investment undertakings balance also includes investments in property fund portfolios of €117.0 million and a hedge fund, which is managed by BlueBay Asset Management LLP, of €34.3 million. Both fund portfolios are valued by using an alternative valuation method. Alternative valuation methods are explained in section D.4 of this report.

Equities

As stated above, MS AISE holds only listed equities per 31 December 2022. The listed equities are classified as quoted market prices under Solvency II.

Corporate bonds

During reporting year 2022, MS AISE has invested into a new segregated bond mandate that is being managed by Aegon Asset Management UK plc covering €195.1 million of the Company's assets. Although the mandate may invest in different bond types, the portfolio only consisted of corporate bonds at 31 December 2022.

Derivatives

Listed derivative contracts are valued using quoted prices and are classified as quoted market prices. Over the counter ('OTC') currency options are valued by the counterparty using quantitative models with multiple market inputs such as foreign exchange rate volatility. The market inputs are observable and the valuation can be validated through external sources. Therefore, OTC derivative contracts are classified as adjusted quoted market prices.

The value of derivative liabilities has been included in other liabilities as shown in the table per section D.3 of this report.

3. Reinsurance recoverables

On the Solvency II balance sheet reinsurance recoverables represent amounts due from reinsurers on unsettled claims arising from the related reinsurance contracts. Under IFRS this is presented as the reinsurers' share of the provision for outstanding claims as well as the unearned premiums.

Please refer to subsection D.2.5 for a bridge table from IFRS to Solvency II net technical provisions.

4. Insurance, reinsurance and intermediaries receivables

Under Solvency II the insurance, reinsurance and intermediaries receivables represent amounts due as at the balance sheet date and valued at fair value. Under IFRS the above receivables are initially recognised at fair value and subsequently measured at amortised cost using the effective interest rate method.

Receivables not overdue more than 90 days are considered within the calculation of the technical provisions as future premiums, resulting in an adjustment of €328.5 million to receivables. The receivables overdue more than 90 days are presented as an asset on the Solvency II balance sheet.

Due to the short term nature of the remaining overdue receivables, the IFRS carrying value (amortised cost net of bad debt provision) is considered not materially different from the fair value under Solvency II. Therefore, no other adjustment is made.

5. Receivables (trade, not insurance)

The IFRS receivables are initially recognised at fair value and subsequently measured at amortised cost using the effective interest rate method. Under Solvency II receivables are measured at fair value. Furthermore, the investments related receivables are re-classified to be part of the Investments (incl. participations) line under Solvency II.

For Solvency II reporting purposes prepayments are considered to have a fair market value of nil resulting in an adjustment of €2.0 million.

Due to the short term nature of the other receivables, the IFRS carrying value is considered not materially different from the fair value under Solvency II. Therefore, no other adjustment is made.

6. Deferred acquisition costs

Under Solvency II, deferred acquisition costs are included in the best estimate of future cash outflows for the technical provisions. Therefore, deferred acquisition costs are valued at zero on the balance sheet.

Under IFRS, the deferred acquisition costs are amortised over the period in which the related premiums are earned.

7. Deferred tax assets

For the Solvency II balance sheet MS AISE recognises deferred taxes on the basis of the difference between values of the assets, liabilities and technical provisions assessed in accordance with Solvency II principles and the values ascribed to assets and liabilities as recognised for tax purposes.

Under IFRS the valuation of deferred tax assets and liabilities is based on IAS 12, whereby for deferred tax assets, an assessment is made of the probability of future taxable profits and the realisation of the deferred tax asset within a reasonable time frame. For Solvency II, the Company considers the requirements of the Circular 2020_03, issued by the NBB on 26 February 2020, which may result in temporary methodology differences between Solvency II and IFRS for the valuation of deferred tax assets and liabilities.

A deferred tax asset is recognised to the extent that MS AISE is capable and allowed to utilise it within the applicable tax legislation. MS AISE does not discount its deferred tax assets and liabilities. MS AISE offsets deferred tax assets and liabilities only if it has a legally enforceable right to set off and if it relates to taxes levied by the same tax authority on the same taxable undertaking.

Therefore, the Solvency II deferred tax assets are increased by €1.9 million to reflect the tax impact of valuation differences of assets, liabilities and technical provisions under IFRS and Solvency II.

Next to the impact of the above valuation differences, MS AISE has material deferred tax assets outstanding for the Belgian and French branches which are predominantly related to fiscal losses. These losses can be offset against future profits for an indefinite period. The unused Belgian tax losses have not

been fully accounted for as deferred tax asset and the recognised deferred tax asset has been limited to the amount which MS AISE expects to be able to realise over the next five years.

8. Property, plant and equipment held for own use

The lease property recognised on the Solvency II balance sheet is in accordance with IFRS 16.

Equipment is included under IFRS at historical cost less accumulated depreciation and provision for impairment where appropriate. Solvency II requires property and equipment to be valued at fair value. In all respects, the IFRS carrying value is deemed not materially different from the fair value under Solvency II.

9. Goodwill and intangible assets

Goodwill is valued at nil on the Solvency II balance sheet in accordance with article 12 of Delegated Regulation (EU) 2015/35.

Intangible assets are recognised in the Solvency II balance sheet at a value other than zero only if they can be sold separately and it can be demonstrated that there is a value for the same or similar assets that is derived from quoted market prices in active markets. Intangible assets of MS AISE consist of internally developed software that do not meet these criteria. As a result the intangible assets are valued as nil in the Solvency II balance sheet.

D.1.2 Leasing arrangements per material asset class

MS AISE entered into several non-cancellable lease arrangements for office space and cars. In accordance with IFRS16, these are recognised on the Solvency II balance sheet as property. Please refer to section A.4 for details on the Company's leases.

D.1.3 Changes made to the recognition and valuation bases used or to estimations

No material changes to recognition principles, valuation bases or estimations have been made since the last Solvency and Financial Condition Report.

D.2 Technical provisions

D.2.1 Overview

This section contains an analysis of the MS AISE Solvency II technical provisions.

Below is a summary bridge of the components of the technical provisions from IFRS to Solvency II. The 2021 Solvency II values have been included for comparative purposes.

	As reported under IFRS €'000	SII valuation adjustment €'000	SII balance sheet 2022 €'000	SII balance sheet 2021 €'000
Technical provisions	1,727,957	(569,529)	1,158,429	1,090,124
Reinsurance recoverables	(353,566)	174,328	(179,237)	(159,322)
Net deferred acquisition costs	(60,537)	60,537	-	-
Net technical provisions	1,313,855	(334,663)	979,192	930,802

The increase in Solvency II net technical provisions is a result of an increase in the gross technical provisions (€68.3 million), partly offset by an increase in the reinsurance recoverables (€19.9 million).

The increase in the gross technical provisions compared to last year can be primarily explained by the increase of the earned losses (€93.7 million) and the expenses (€14.9 million), partly offset by more profit on unaccepted legally obligated business (€32.6 million) and a reduction of the risk margin (€5.3 million).

The reinsurance movement is due to an increase in the earned losses (€43.6 million), partly offset by the higher future premium (€15.3 million) and additional reinsurance cost due to the unaccepted legally obligated inwards business (€7.7 million). The movements are mostly impacted by the increase in the minimum deposit premium for future reinsurance programmes and higher projected reinsurance coverage.

D.2.2 Best estimate plus risk margin by Solvency II line of business

The table below shows the Solvency II technical provisions, including the amount of the best estimate and risk margin separately for each material line of business.

	Motor vehicle liability insurance €'000	Other motor insurance €'000	Marine, aviation and transport insurance €'000	Fire and other damage to property insurance €'000	General liability insurance €'000	Miscellaneous financial loss €'000	Other SII lines of business €'000	Total 2022 €'000	Total 2021 €'000
Total best estimate - gross	180,588	25,752	185,234	246,950	404,401	19,772	25,872	1,088,569	1,014,954
Less: Total best estimate - reinsurance	(9,632)	1,995	(19,996)	(57,212)	(68,502)	(12,464)	(13,426)	(179,237)	(159,322)
Total best estimate - net	170,956	27,747	165,238	189,738	335,899	7,308	12,446	909,332	855,632
Add: Risk margin	12,041	3,845	15,345	13,948	22,591	951	1,140	69,861	75,170
Technical provisions - total	182,997	31,592	180,583	203,686	358,490	8,259	13,586	979,193	930,802

D.2.3 Description of bases, methods and main assumptions

Introduction

The Solvency II technical provisions are calculated as the sum of a best estimate of the insurance liabilities and a risk margin.

The best estimate portion of the Solvency II technical provisions represents the sum of probability-weighted average future cash flows in respect of all policies that are legally obligated as at the valuation date, taking into account the time value of money (expected present value of future cash flows) using the EIOPA risk-free rate term structure. These future cash flows include future premium receipts, future claims payments, future reinsurance spend, future reinsurance recoveries and associated future expense cash flows.

The risk margin represents the risk premium that would be required to be paid to a third party in order to take over and meet the insurance and reinsurance obligations over their lifetime.

Best estimates: the foundation of the IFRS, BEGAAP and Solvency II technical provisions

The actuarial best estimate reserves calculated as part of the IFRS and BEGAAP balance sheet form the foundation of the best estimate portion of the Solvency II technical provisions. This is adjusted to allow for Solvency II principles.

Full year projections

Projections are carried out at a reserving class level using standard actuarial techniques and incorporating actuarial judgement. Ultimate claims are selected using a reserving tool which allows a variety of standard actuarial reserving methods to be used with a high level of efficiency whilst displaying a range of key diagnostics. Input from underwriters is provided at an early stage of the process in order to capture information such as changes in the portfolio and softer information such as market conditions.

All assumptions are reviewed in light of the diagnostics and other information. All projections are subject to review by the actuarial team and by a wider audience including representatives from the underwriting, risk, claims and senior management teams.

In the case of large or catastrophe losses, the actuaries make use of expert knowledge from the claims and underwriting departments.

Actuarial judgement

The projections are subject to a certain amount of judgment as many, often conflicting, factors are considered when determining the ultimate income and losses.

Best estimate full year projections – calculation of earned portion and estimation of unearned incepted claims

In the reserving process, on the one hand, accident year projections are run for the P&C line of business at the Belgian, Dutch and French branches. On the other hand, underwriting year projections are run for Marine across all branches and P&C of the UK branch. The ultimates are split between the earned-to-date and the expected earnings in the future period, based on the earning patterns of each reserving class.

In the Solvency II process the unearned incepted claims form part of the premium provision. These are calculated by applying an initial expected prior loss ratio ('IELR') and net-to-gross ratio ('N/G ratio') to the unearned premium reserve from the IFRS balance sheet. The assumptions, including the IELR and N/G ratios, are consistent with the periodic reserving process.

The initial expected prior loss ratios are in line with the business plan, unless the most recent data available to actuaries differs materially. During the year these loss ratios will be updated if the performance of the class or new information leads to a materially different view.

Gross future premiums

Solvency II requires technical provisions to include all gross future premium cash flows except overdue premium debtors.

The starting point for this amount is the IFRS not-yet-overdue premium debtors figure. This is adjusted for specific known differences in the basis of preparation between Solvency II and IFRS which are explained below (see sections on binder adjustment and discount credit).

The resulting future premium value is allocated by class, and then split between earned (claims provision) and unearned (premium provision). This split is done by allocating cash to earned premiums first. If for a single class the cash received is higher than the IFRS earned premium, it is assumed that the earned premium is fully received, meaning that the future premium is fully allocated to unearned future premium, i.e. premium provision. If the cash received is lower than the IFRS earned premium, the difference between the two is allocated to the earned future premium, i.e. claims provision. The remainder will flow into the premium provision.

Reinsurance future premiums

The Solvency II technical provisions include:

- All future reinsurance premiums that are legally obligated; and
- A contribution towards reinsurance to be bought in the future providing cover to inwards legally obligated gross business.

Similar to gross future premiums, the basis of the legally obligated portion is the not-yet-due reinsurance premium debtors from the IFRS balance sheet, to which the minimum legally obligated unaccepted reinsurance programmes' cost is added. The future cost portion is calculated on a 'correspondence' basis where the cost of the cover is shared across the relevant legally obligated and non-legally obligated gross business.

Expenses

Under Solvency II, all future expenses that will be incurred in servicing existing policies are allowed for.

Future expense cash flows are captured using expense percentage assumptions and applying those to future cash flows. Expense percentage assumptions are calibrated using the current forecast for the annual expense budget of MS AISE, scaled to allow for only the portion relating to servicing existing business.

Unaccepted legally obligated contracts

IFRS only considers accepted contracts at the valuation date whereas Solvency II requires the inclusion of future cash flows in respect of all contracts that are legally obligated at the valuation date. This includes contracts that will accept after the valuation date but have been written prior to the valuation date. MS AISE takes into account that the insurance contracts have a cancellation clause of two or three months and that MS AISE is legally obligated to contracts expected to accept within this period.

Expected premiums from contracts, meeting this criteria, are obtained and initial expected loss ratios are applied to calculate expected losses. Other items such as reinsurance bad debt, expenses, discount credit and binder adjustments associated with these contracts are explained in other paragraphs of this section.

Reinsurance obligation adjustments

The Solvency II technical provisions include all future reinsurance premiums that are legally obliged and a contribution towards reinsurance to be bought in the future providing cover to inwards legally obligated gross business. The latter is done on a 'correspondence' basis where the cost of the cover is shared across the relevant legally obligated and non-legally obligated gross business.

Binder adjustment

Solvency II requires gross contracts to be recognised on a legal obligation basis. Under IFRS principles, applied by the Company, binding authorities are recognised in full at inception whereas under Solvency II,

only underlying policies that are legally obligated should be included. Therefore, a look-through approach to the underlying contracts is taken. For the classes with a large binder proportion, underwriters provide the inception patterns of the underlying binder contracts. For all other classes, it is assumed that the underlying contracts incept evenly throughout the duration of the binder. Reinsurance recoveries on the gross binder adjustment are calculated by applying net-to-gross ratios to these adjustments.

Settled but unpaid claims

Gross settled but unpaid claims are transferred from insurance creditors into the Solvency II technical provisions which have a neutral impact on the Solvency II own funds.

Reinsurance bad debt

Where appropriate an allowance is made for potential bad debt on reinsurance recoveries. Charge factors are applied to the outwards reinsurance cash flows as these run off over time. Charge factors represent the mix of reinsurer ratings for relevant lines of business, probability of default and expected recoveries given default.

Discount credit

Under Solvency II all cash flows are discounted for the time value of money. The yield curves are the risk-free interest rates issued by EIOPA with the volatility adjustment applied in the technical provisions calculation.

Segmentation

Solvency II requires technical provisions to be reported by line of business and original currency. Reserves are analysed at a level which ensures that volumes of data remain credible. Therefore, only in rare cases, an allocation is required before Solvency II technical provisions can be mapped to lines of business and original currencies.

Risk margin

The risk margin is calculated using the standard formula SCR and represents the risk premium that would be required to be paid by a third party in order to take over and meet the insurance and reinsurance obligations over their lifetime.

Conceptually, the risk margin is calculated as the discounted cost of capital required to be held in order to run off legally obligated business. Therefore, an SCR is calculated for each future year during the run-off period. A discounting factor is applied by using the EIOPA risk-free interest rate without volatility adjustment. Market risk is not included in the calculation of the SCR because, if the insurance liabilities were transferred to a third party, it would be expected that the third party would be able to switch to a risk-free investment portfolio.

The SCR is assumed to run off proportionally to the technical provisions, considering the delay in run-off of the premium risk. This assumption is a good approximation since most sub-risks are heavily influenced by the size of the technical provisions. For example, the counterparty default risk is dependent on the size of the reinsurance coverage, which in itself is closely related to the net technical provisions. The remaining risks are not material. It is a requirement to allocate the risk margin to Solvency II line of businesses and therefore the risk margin is allocated to Solvency II line of business in proportion to the future claims at the reporting date.

D.2.4 Level of uncertainty associated with the Solvency II technical provisions

Most of the uncertainty in the Solvency II technical provisions arises in the process of setting quarterly reserves. The inputs for the net earned future claims and future premiums come directly from the quarterly projections of the ultimate premiums and ultimate claims.

The assessment of the reserves is based on commonly accepted actuarial techniques applied in a consistent manner. Whilst professional judgment has been exercised in all instances, projections of future ultimate losses and loss expenses are inherently uncertain due to the random nature of claim occurrences. The accuracy of the results is dependent upon the accuracy of the underlying data and additional information supplied to the actuarial teams.

The projections are also dependent on future contingent events and are affected by many additional factors, including:

- Claim reserving procedures and settlement philosophy;
- Social and economic inflation;
- Legislative changes;
- Changing court and jury awards;
- New sources of claims;
- Changes in the frequency and/or severity of extreme weather events;
- Improvements in medical technology;
- Changes in policyholder behaviour;
- Underwriting and reserving cycles;
- Other economic, legal, geopolitical and social trends; and
- Random fluctuations, particularly on small accounts.

For long-tailed classes, where development potential exists but is not present in historical data, a specific allowance is made within the IBNR. The level of uncertainty naturally reduces over time as claims are reported and settled, depending upon the nature of the event, the complexity of the losses and the potential for disputes.

Sources of uncertainty that are more specific to the nature of underwriting risks written are explained in the remainder of this section.

Property catastrophe losses: Catastrophe losses by nature are large and often unpredictable and hence can often give rise to additional uncertainty. There is a relatively large amount of uncertainty in respect of future events.

Large (disputed) 'risk' losses: Individual large losses can give rise to relatively high levels of uncertainty, particularly where there is an element of dispute, litigation or uncertainty as to the form of the claimed losses, including reinsurance collections.

Emergence of new latent claims: Some classes are exposed to latent claims, in particular liability classes. Where new claim types have arisen, it can take many years for the full scale of the number and size of claims to emerge. For claims yet to arise there is additional uncertainty around how much allowance to consider for future unknown claim types.

Established long-tailed classes: Long-tailed classes can give rise to relatively large amounts of uncertainty due to the size of the best estimate reserves held in respect of them and the fact that the oldest years may not be fully developed. In particular, the possibility exists for legislative changes applying both prospectively and potentially retrospectively that could affect multiple accounting years. Additionally, if there are development changes in more recent years, the changes may take some time to emerge.

Changes in the mix of business/re-underwriting and case reserving procedure: Some classes have undergone a change in the mix of business written or rate changes in recent years. Other classes have undergone changes in claim handling policy. These changes impact the development profile of relevant lines of business and the expected loss ratios. For long-tailed classes this can have similar considerations in respect of uncertainty as for new long-tailed classes. The effect of rate changes and re-underwriting on

more recent underwriting years is uncertain and hence less weight can be placed on the historic development.

Other components of the Solvency II technical provisions also have some uncertainty, although typically to a lesser extent. The material areas of uncertainty related to each of the other components is set out below.

Expenses: In estimating the expenses, the starting point is the expense budget for the upcoming year. Assumptions are used to estimate the proportion of annual expenses required to service existing policies and the run-off pattern of the liabilities. There is a medium level of uncertainty on all of these assumptions.

Unaccepted legally obligated contracts: A large proportion of policies, underwritten by MS AISE, incept at 1 January each year. This means that for the year-end calculation there are large amounts of future premiums and future claims arising from these unaccepted but legally obligated contracts. Uncertainty in these items arises not only from the same factors mentioned above, but also from the quality of the business plan used to set assumptions, including premium volumes by inception month, loss ratios, and the volume of binders written. There is also uncertainty around whether the business plan will be achievable given the commercial conditions in place at the time of writing. It is noted that for renewal business, only the policies which have passed the tacit renewal term are considered as unaccepted and legally obligated.

Factors influencing whether the unaccepted premium will be more or less than expected are less material to the overall technical provisions, as any difference in unaccepted premium will partially be offset by a corresponding movement in the unaccepted claims. Factors relating to the loss ratio and the tacit renewal, used to calculate the unaccepted claims, lead to a larger level of uncertainty in the overall technical provisions.

Future reinsurance premiums: The proportion of reinsurance contracts that are losses-occurring, the earnings patterns and the nature of the reinsurance contracts (quota share or excess of loss) are important parameters in the calculation. The key assumption underlying all of these is that management will continue to buy the same/similar reinsurance programme in future years. While this assumption is reasonable based on past years, there is uncertainty over the availability and price of reinsurance in future years, which could influence management decisions.

Reinsurance bad debt: There is considerable uncertainty in this amount, driven by whether or not recoverable events occur, future economic conditions and the long term solvency of individual reinsurers. However, the reinsurance bad debt is an immaterial part of the total technical provisions, so there can be no large impact on the overall technical provisions arising from this uncertainty.

Risk margin: The methodology to calculate the risk margin is prescribed, and depends only on the SCR, which is calculated using the standard formula, and its expected run-off. Uncertainty arises from the inputs into the standard formula and the assumed cash flows used to run-off the SCR.

Discount credit: The yield curves used for discounting are prescribed by EIOPA including volatility adjustment. Uncertainty arises from assumptions around the timing of any cash flows, driven by both the timing of claim events and the period needed to settle claims and the overall level of the interest rates. Given the current economic circumstances, the uncertainty on the overall technical provisions is high.

Inflation: The current level of inflation is above the average of the past decade. A deep-dive analysis has been performed during the reporting period and an additional claims allowance has been added to technical provisions. It is unknown how long the elevated level of inflation continues to exist, but impact and consequences will be further monitored during 2023.

D.2.5 Material differences between IFRS and Solvency II technical provisions

The adjustments required to bridge the gap from IFRS reserves to Solvency II technical provisions as at 31 December 2022 are shown in the chart below both at the total level and for the lines of business that are most material for MS AISE.

Most of the adjustments are explained in the preceding sections. Additional items are explained underneath the table. IFRS data split by Solvency II line of business represents an approximation since not all business is allocated at source to a line of business. As a result, in some cases, judgement has been used.

	Motor vehicle liability insurance	Other motor insurance	Marine, aviation and transport insurance	Fire and other damage to property insurance	General liability insurance	Miscellaneous financial loss	Other SII Lines of Business	Total 2022
	€'000	€'000	€'000	€'000	€'000	€'000	€'000	€'000
IFRS net technical provisions*	218,473	33,568	227,491	295,903	484,281	23,503	30,636	1,313,854
Adjustments to IFRS technical provisions	(57,368)	(8,815)	(59,736)	(77,700)	(127,165)	(6,171)	(8,045)	(344,999)
Best estimate net earned future claims	161,105	24,753	167,755	218,203	357,116	17,332	22,591	968,855
Other future claims on incepted contracts	41,097	6,314	42,793	55,662	91,098	4,421	5,763	247,148
Future premiums including unaccepted contracts	(66,973)	(8,810)	(82,512)	(132,515)	(191,510)	(18,288)	(20,919)	(521,527)
Unaccepted claims	36,513	5,610	38,020	49,454	80,937	3,928	5,120	219,582
SII expenses	16,714	2,568	17,404	22,638	37,050	1,798	2,344	100,516
Discount credit	(17,585)	(2,701)	(18,311)	(23,820)	(38,981)	(1,892)	(2,466)	(105,756)
Risk margin	12,041	3,845	15,345	13,948	22,591	951	1,140	69,861
Other	85	13	89	116	189	9	12	513
SII net technical provisions	182,997	31,592	180,583	203,686	358,490	8,259	13,585	979,192

Adjustments to IFRS reserves: The largest adjustment relates to the provision for unearned premiums and claims, net of deferred acquisition costs, not recognized under Solvency II (€274.3 million). The residual balance relates to the removal of the net management margin held over and above the best estimate (€70.7 million).

Other future claims on incepted contracts: This includes claims cash flows other than those included in the best estimate earned future claims which arise from incepted contracts. It primarily includes settled not paid claims, unearned future claims and the allowance considered for the inflation impact on future cashflows.

Future premium including unaccepted contracts: This is a combination of the earned future premiums (€65.9 million), the unearned future premiums (€141.9 million) and the unaccepted premiums (€313.7 million). The largest component, unaccepted premiums, is to be accounted for as contracts which are legally bound, but have not yet incepted and are normally at largest near year-end.

Unaccepted claims: The unaccepted claims are calculated by multiplying the unaccepted premiums with an initial expected loss ratio.

Other: This includes the smaller adjustments, e.g. reinsurance bad debt calculated on a Solvency II basis.

D.2.6 Matching adjustment or transitional measures

The Solvency II technical provisions calculations do not apply the matching adjustment or transitional measures referred to in Article 77b and 308d of Delegated Regulation (EU) 2009/138.

D.2.7 Reinsurance recoverables

The calculation of reinsurance recoverables is explained in more detail in prior sections (best estimate full year projections, unaccepted legally obligated contracts, binder adjustment). In calculating the reinsurance recoveries and the reinsurance premiums, the characteristics of the MS AISE reinsurance programmes are considered.

The outward reinsurance contracts are written on a variety of bases, including risks attaching, losses occurring, excess of loss and quota share bases, and with a variety of reinsurers. MS AISE does not have outwards reinsurance contracts with special purpose vehicles.

D.2.8 Material changes in methodology and assumptions

There are no material changes in methodology and assumptions during the reporting year.

D.3 Other liabilities

Solvency II valuation methods and differences compared to BEGAAP and IFRS per material other liabilities class

		Reported under BEAAP	IFRS adjustment	Reported under IFRS	SII reclass	SII valuation adjustment	SII balance sheet 2022	SII balance sheet 2021
	Note	€'000	€'000	€'000	€'000	€'000	€'000	€'000
Technical provisions		1,839,956	(111,999)	1,727,957	-	(569,529)	1,158,429	1,090,124
Insurance, intermediaries and reinsurance payables	1	117,306	(523)	116,783	-	(101,750)	15,033	12,702
Payables (trade, not insurance)	2	75,127	12,495	87,622	102	-	87,724	109,540
Derivative liabilities	3	-	5,879	5,879	431	-	6,310	4,231
Debts owed to credit institutions		-	-	-	-	-	-	236
Reinsurance share of deferred acquisition costs	4	-	5,166	5,166	-	(5,166)	-	-
Retirement benefit obligations	5	6,479	(674)	5,805	-	-	5,805	9,606
Deferred tax liabilities	6	-	3,337	3,337	-	20,593	23,930	-
Subordinated liabilities	7	2,588	-	2,588	(102)	-	2,486	2,617
Total Liabilities		2,041,457	(86,319)	1,955,137	431	(655,851)	1,299,718	1,229,056
Total Assets		2,518,024	141,237	2,659,260	431	(604,456)	2,055,235	1,814,105
Excess of Assets over Liabilities		476,567	227,556	704,122	-	51,395	755,517	585,049

The above table shows the reclassification of liabilities from BEGAAP to IFRS and from IFRS to Solvency II presentation. For the SII adjustments, a distinction is made between IFRS to SII reclassifications as well as SII valuation adjustments as at 31 December 2022. The 2021 Solvency II balance sheet has been included for comparative purposes.

The breakdown into liability classes in the above table is less granular than the S.02.01 QRT, as presented in the annex. This is to allow a clearer understanding of the valuation differences.

For information on the Solvency II reclassifications please refer to the explanation in section D.1 Assets. For information on technical provisions, please refer to section D.2 Technical provisions.

BEAAP to IFRS adjustments

The BEAAP to IFRS adjustments per asset class are highlighted below, while the IFRS to SII adjustments are discussed in the remainder of this section.

1. Insurance, intermediaries and reinsurance payables

There is no difference on the valuation of insurance, reinsurance and intermediaries payables between IFRS and BEAAP. The BEAAP-IFRS restatement, indicated above, relates to the reclass of certain premium tax payables which are being presented as other payables on the IFRS balance sheet.

2. Payables (trade, not insurance)

Under BEAAP, trade and other payables represent liabilities to pay for goods or services that have been received or supplied in the normal course of business, invoiced by the supplier before the balance sheet date, but for which payment has not yet been made.

Trade payables consists principally of collateral repayables on the derivative contracts, payables to other MSI Group entities and other sundry payables.

The IFRS 16 standard determines the valuation and handling of lease contracts. The lease liabilities recognised on the IFRS balance sheet are in accordance with this standard. Therefore, lease liabilities are recognised as part of the payables on the IFRS balance sheet, in accordance with IFRS 16. Under BEGAAP this standard is not being recognised which mainly explains the restatement from BEGAAP to IFRS.

3. Derivative liabilities

As mentioned in section D.1 Assets, investments (incl. derivative liabilities) are recognised at fair value under IFRS, while for BEGAAP purposes financial assets are valued at historical cost value less impairment and allowance for bad debt. Therefore, the fair value adjustments are added to the balance sheet. Any currency exchange differences recognised on the fair value adjustments are to be included on the balance sheet as well.

As the book value of the derivative liabilities is valued at zero, BEGAAP balance is nil.

4. Reinsurance share of deferred acquisition costs

As mentioned in section D.1 Assets, according to BEGAAP, the reinsurers' share of provision for unearned premiums is calculated on the reinsurance premiums less commission expenses for acquisition. Under IFRS, however, this is not the case and the commission expenses for acquisition are not subtracted from the reinsurance premiums.

Therefore, the netting with reinsurers' share of acquisition expenses has to be reversed and the expenses are restated as payables when adjusting from BEGAAP to IFRS.

5. Retirement benefit obligations

Under BEGAAP, the liability recognised on the balance sheet in respect of defined benefit pension plans is the fair value of plan assets less the present value of the defined benefit obligation at the reporting date, together with adjustments for restrictions on the recognition of a defined benefit asset due to an asset ceiling. The present value of the defined benefit obligation is determined by discounting the estimated future cash outflows using discount rates set on the basis of the yield of high-quality debt instruments (AA rated or equivalent) issued by blue-chip companies, with maturities consistent with those of the defined benefit obligations.

There is no difference in the valuation of defined benefit pension liability between IFRS and BEGAAP. The disclosed restatement of €0.7 million is not related to defined benefit pension plans. It covers the pension provision which has to be accrued for at the French branch according to local regulation. For completeness purposes, it has been restated out of payables (trade, not insurance) and presented as retirement benefit obligations on the BEGAAP balance sheet. However, for IFRS, this is reversed as it does not meet the IAS 19 recognition criteria.

6. Deferred tax liabilities

Please refer to section D.1 for valuation methods and details surrounding deferred tax positions.

7. Subordinated liabilities

The Company has received a subordinated loan from MS ACS for a total amount of £2.2 million. Interest is accrued at the base rate set by the Bank of England with an addition of 1%. First accrual is done on the effective date of the agreement and then on the first business day of each calendar quarter in order to be capitalised at 31 December each calendar year. This agreement is in effect and the interest is payable upon repayment of the loan.

There is no difference on the presentation of subordinated liabilities between IFRS and BEGAAP.

Solvency II valuation and classification adjustments

Set out in the remainder of this section are the Solvency II valuation principles for material liability classes with a comparison to the corresponding IFRS valuation principles, if different.

1. Insurance, intermediaries and reinsurance payables

The IFRS insurance, intermediaries and reinsurance payables are held at amortised cost. Similar to the insurance and reinsurance receivables as described under section D.1, due to the short term nature of these payables, the IFRS carrying value is not materially different from the fair value under Solvency II and therefore no adjustment is made.

Under Solvency II, reclasses of €44.2 million (insurance and intermediaries payables) and €57.6 million (reinsurance payables) (2021: €35.7 million and €55.5 million respectively) have been made for settled but not paid claims and reinsurance premiums payable but not-yet-due at the balance sheet date. These amounts have been transferred to technical provisions. Please refer to section D.2 for further details on technical provisions and the valuation thereof.

2. Payables (trade, not insurance)

Similar to trade receivables (as described in section D.1 of this report), due to the short term nature of the other payables, the IFRS carrying value is considered not materially different from the fair value under Solvency II. Therefore, no material adjustment is made.

3. Derivative liabilities

Please refer to section D.1 for valuation methods and details surrounding MS AISE's investments portfolio.

4. Reinsurance share of deferred acquisition costs

Under Solvency II, deferred acquisition costs are included in the best estimate of future cash outflows for the technical provisions. Therefore, the reinsurance share of deferred acquisition costs is valued at zero on the balance sheet.

Under IFRS, the deferred acquisition costs are amortised over the period in which the related premiums are earned.

5. Retirement benefit obligations

There is no difference in the pension liability valuation between IFRS and Solvency II.

6. Deferred tax liabilities

Please refer to section D.1 for valuation methods surrounding deferred tax positions. There is a minor IFRS deferred tax liability related to the Dutch branch, which is fully reversed under Solvency II following the tax impact of valuation differences on assets, liabilities and technical provisions between IFRS and Solvency II.

Current tax liabilities are included in payables (trade, not insurance) and are valued at fair value under Solvency II.

No material changes in the valuation of the deferred tax liability position have taken place over the reporting period.

7. Subordinated liabilities

The IFRS value is considered a suitable approximation of the Solvency II fair value requirement. There is one reclass noted for which reference is made to the explanation on Solvency II reclassification of IFRS balances under section D.1.

8. Contingent liabilities

MS AISE does not have any material contingent liabilities to disclose under Solvency II.

D.4 Alternative methods for valuation

Methods of valuation for items other than net technical provisions recognised in the Solvency II balance sheet and valued based on quoted market prices or adjusted quoted market prices have been disclosed in section D.1 and D.3 of this report.

MS AISE's property fund investments are valued by using an alternative valuation method. The most recent net asset value provided by the fund managers is used. The net asset values, which may be a quarter in arrears, are determined by the fund managers using proprietary cash flow models. Rental growth and income are expected to be the predominant drivers of returns rather than capital appreciation. In certain instances, adjustments are made to bring the net asset value to a more current valuation. The inputs into that valuation, such as discount rates, are primarily unobservable and as a result, these assets are classified as alternative valuation methods. Where an investment is made into a new property fund the transaction price is considered to be the fair value if that is the most recent price available. The value of MS AISE's property fund portfolio is based on the net asset value provided by the investment manager, CBRE Global Collective Investors UK Limited.

MS AISE also invests into a hedge fund which is managed by BlueBay Asset Management LLP. The fund is categorised as being valued by using an alternative valuation method due to the limited liquidity of the fund, because subscriptions or withdrawals are possible once a month. The net asset value of the fund is determined by administrator JP Morgan Hedge Fund Services Ireland as at the close of business on each valuation date. The fund's net asset value is equal to the value of the respective total assets less the respective total liabilities.

Furthermore, the present value of MS AISE's defined benefit pension plan obligation is determined by using an alternative valuation method (as described in section D.3 of this report).

During the reporting period, MS AISE had no other material assets or liabilities valued by using alternative valuation methods in accordance with Article 10(5) of the Delegated Regulation (EU) 2015/35.

D.5 Any other information

The risks associated with the assets and liabilities set out in sections D.1 to D.4 of this report and how these are managed in accordance to Article 260 of the Delegated Regulation (EU) 2015/35 are explained in section C of this report.

All other material information relating to the Company's valuation for solvency purposes has been disclosed in sub-sections D.1 to D.4 above.

Section E - Capital Management

E.1 Own funds

Capital management

MS AISE's approach to capital management aims to ensure that MS AISE maintains sufficient capital for regulatory and rating agency purposes, can withstand major catastrophe claims, can attract good quality business and be able to exploit opportunities for profitable growth.

MS AISE's diverse spread of underwriting risk and geographical exposure among thirty principal classes of business, spread over four material Solvency II lines of businesses which are described in section A of this report, helps to increase capital efficiency through diversification of risks.

MS AISE believes that significant value can be added over the insurance cycle, through a combination of organic growth and carefully selected acquisitions. MS AISE's goal is to maintain a diverse and balanced portfolio, which reduces volatility and enhances capital efficiency.

Capital deployment to meet short and long term business needs is balanced with the need to meet the requirements of stakeholders. MS AISE operates a planning period of three to five years. Business plans are reviewed and debated at executive level and approved by the Board. MS AISE ensures that it continuously maintains own funds of suitable quality and permanence to meet the relevant tier requirements of Solvency II, whilst making prudent use of instruments to enhance the earnings of the entity. In line with the Company's Capital Management Policy, at least 80% of the SCR should be covered by Tier 1 own funds and no more than 15% of the SCR should be covered by Tier 3 own funds (with the balance being Tier 2 basic own funds).

MS AISE's policy is to actively manage capital in order to meet regulatory requirements and contribute to the Company's target to deliver a cross-cycle return on equity after tax in excess of 7% (2021: 7%), which will be reviewed should the Company move to an internal model and away from the standard formula.

MS AISE's internal target level for the Solvency Ratio is 150% (based on the standard formula) during the reporting year, as captured in the Company's Capital Management Policy. As Solvency numbers can be volatile a tolerance of 5% is allowed around the target of 150%. This means that once the solvency ratio falls below the 145%, capital management actions will be planned to bring the ratio back to 145%. If the solvency ratio would increase to above 155%, the surplus own funds would be considered for business growth opportunities and strategic initiatives, increase in risk taking or for dividend distribution.

Differences between IFRS and Solvency II net asset value

	2022	2021
	€'000	€'000
BEGAAP net asset value	476,567	371,287
Allowed items – deferred taxes and IFRS16 assets & liabilities	11,648	11,835
Reversal amortisation goodwill	23,293	20,732
Financial assets at fair value	66,937	82,067
Adjustment to IFRS technical provisions	125,678	105,425
IFRS net asset value	704,122	591,345
Disallow items – goodwill, intangible assets, prepayments and deferred acquisition costs	(98,380)	(90,286)
Solvency II technical provisions adjustment	395,200	289,003
Future premiums and claims adjustments	(226,726)	(209,542)
Deferred tax on adjustment items	(18,699)	4,528
Excess of assets over liabilities – Solvency II	755,517	585,049

Sections D.1 to D.3 of this report explain the Solvency II valuation methods and adjustments to the IFRS and BEGAAP net asset value.

Available own funds

As at 31 December 2022, MS AISE had available own funds of €758.0 million (2021: €587.7 million). MS AISE does not have any non-available or non-transferrable own funds. MS AISE's available own funds are made up of:

	2022	2021
	€'000	€'000
Excess of assets over liabilities	755,517	585,049
Subordinated liabilities	2,486	2,617
Total basic and available own funds	758,003	587,666

MS AISE's available own funds only consists of basic own fund items. Basic own funds primarily consist of the Solvency II excess of assets over liabilities as well as subordinated liabilities presented as own funds in line with Article 73 of the Delegated Regulation (EU) 2015/35.

MS AISE does not have any ancillary own funds.

Own funds structure

	Total	2022			2021			
		Tier 1	Tier 2	Tier 3	Total	Tier 1	Tier 2	Tier 3
	€'000	€'000	€'000	€'000	€'000	€'000	€'000	€'000
Ordinary share capital	140,000	140,000	-	-	30,000	30,000	-	-
Reconciliation reserve	615,517	615,517	-	-	538,907	538,907	-	-
Subordinated liabilities	2,486	-	2,486	-	2,617	-	2,617	-
An amount equal to the value of net deferred tax assets	-	-	-	-	16,142	-	-	16,142
Total own funds	758,003	755,517	2,486	-	587,666	568,907	2,617	16,142

The table above shows the composition and quality of own funds as at 31 December 2022 and 31 December 2021.

Reference is made to the capital injection of €110.0 million described as a significant event under section A.1. As a result, from 11 March 2022 onwards through the execution of the notary deed, the subscribed share capital of MS AISE is represented by 1,164,000 shares at a nominal value of €120.27 each.

Available own funds are classified into tiers based on the extent to which they possess the characteristics of permanency and subordination. Four further features are also taken into consideration, namely:

- Sufficient duration;
- An absence of incentives for redemption;
- An absence of mandatory servicing costs; and
- An absence of encumbrances.

Based on these classification criteria, called up and fully paid ordinary shares and reconciliation reserve are Tier 1 items.

The subordinated debt has been issued by MS Amlin Corporate Services Limited ('MS ACS') to MS AISE. The agreement is drafted in line with Articles 72 and 73 of the Delegated Regulation (EU) 2015/35 and therefore the subordinated liabilities have been assessed for classification purposes under Solvency II as Tier 2 capital.

Tier 3 own funds represent net deferred tax assets only. As at 31 December 2022, Tier 3 capital is nihil due to deferred tax liabilities being higher as deferred tax assets on the Solvency II balance sheet. Please refer to section D.1 for details of deferred tax assets valuation.

Analysis of significant changes to available own funds during the period

Movements in the reconciliation reserve

The main constituent of available own funds is the reconciliation reserve which comprises the excess of assets over liabilities as valued in the Solvency II balance sheet. The movements in the reconciliation reserve during 2022 are presented in the table below:

	€'000
Reconciliation reserve at 31 December 2021	538,907
<i>Movements in Solvency II balance sheet</i>	
Increase in financial assets (excluding invested capital increase)	105,343
Increase in other assets	5,993
Increase in technical provisions	(48,390)
Decrease in other liabilities	13,664
	<hr/>
	76,611
Reconciliation reserve at 31 December 2022	615,517

The movements in the Solvency II balance sheet include the impact of changes to the IFRS net assets, as well as movements in the Solvency II valuation adjustments.

The increase in financial assets is primarily driven by higher cash overdraft positions following paid written premiums which resulted in additional purchases over the reporting period, primarily leading to higher liquidity exposures. Furthermore, the Company acquired several investments in 2022 via a new segregated bond mandate.

The increase in technical provisions is described in section D.2 of this report.

Other available own funds

As mentioned earlier in this section, the Company's ordinary share capital increased with €110.0 million during the reporting period due to a capital injection without the issuance of new shares. In addition, there were no material valuation changes to the other available own funds items.

Own funds to cover Solvency Capital Requirement and Minimum Capital Requirement

The eligible amounts by tier to cover the Solvency Capital Requirement ('SCR') and the Minimum Capital Requirement ('MCR') are shown in the table below:

	2022				2021			
	Total	Tier 1	Tier 2	Tier 3	Total	Tier 1	Tier 2	Tier 3
	€'000	€'000	€'000	€'000	€'000	€'000	€'000	€'000
Eligible own funds covering SCR	758,003	755,517	2,486	-	587,666	568,907	2,617	16,142
Eligible own funds covering MCR	758,003	755,517	2,486	-	571,524	568,907	2,617	-
SCR	475,622				455,746			
MCR	186,499				169,149			
Solvency ratio	159.4%				128.9%			
MCR ratio	406.4%				337.9%			

MS AISE's policy is to actively manage capital in order to meet regulatory requirements and contribute to the Company's target to deliver a cross-cycle return on equity after tax in excess of 7% (2021: 7%). As at 31 December 2022 MS AISE's Solvency Ratio was 159.4% (2021: 128.9%). This increase is mainly driven by the increase of the own funds. For further explanation on own funds movements, reference is made to the explanations above.

There is no restriction to Tier 1 capital. Furthermore, Tier 3 capital, representing the net deferred tax assets on the Solvency II balance sheet, is nihil as at 31 December 2022 due to tax liabilities being higher as the corresponding assets. Therefore, the 15% limit imposed by Article 82 of Delegated Regulation (EU) 2015/35 is respected.

The amount of eligible own funds to cover the MCR should exclude Tier 3 capital as ineligible. However, as Tier 3 own funds is valued at zero as at 31 December 2022, no specific restatement is required. There are no restrictions to Tier 1 and 2 capital in respect of MCR coverage.

The SCR is calculated using the standard formula as prescribed in the Solvency II Directive and other Delegated Regulations. The calculation is explained in section E.2 of this report.

Analysis of significant changes to Solvency II Ratio during the period

	€'000	Solvency II Ratio
Total available own funds over SCR at 1 January 2022	131,920	128.9%
Change in IFRS net assets	112,777	24.7%
Change in Solvency II valuation adjustments	57,692	12.7%
Change in subordinated liabilities value	(131)	(0.1%)
Change in SCR	(19,877)	(6.9%)
Available own funds over SCR at 31 December 2022	282,381	159.4%

The change in IFRS net assets includes the impact of the Company's IFRS profit after tax of €0.9 million.

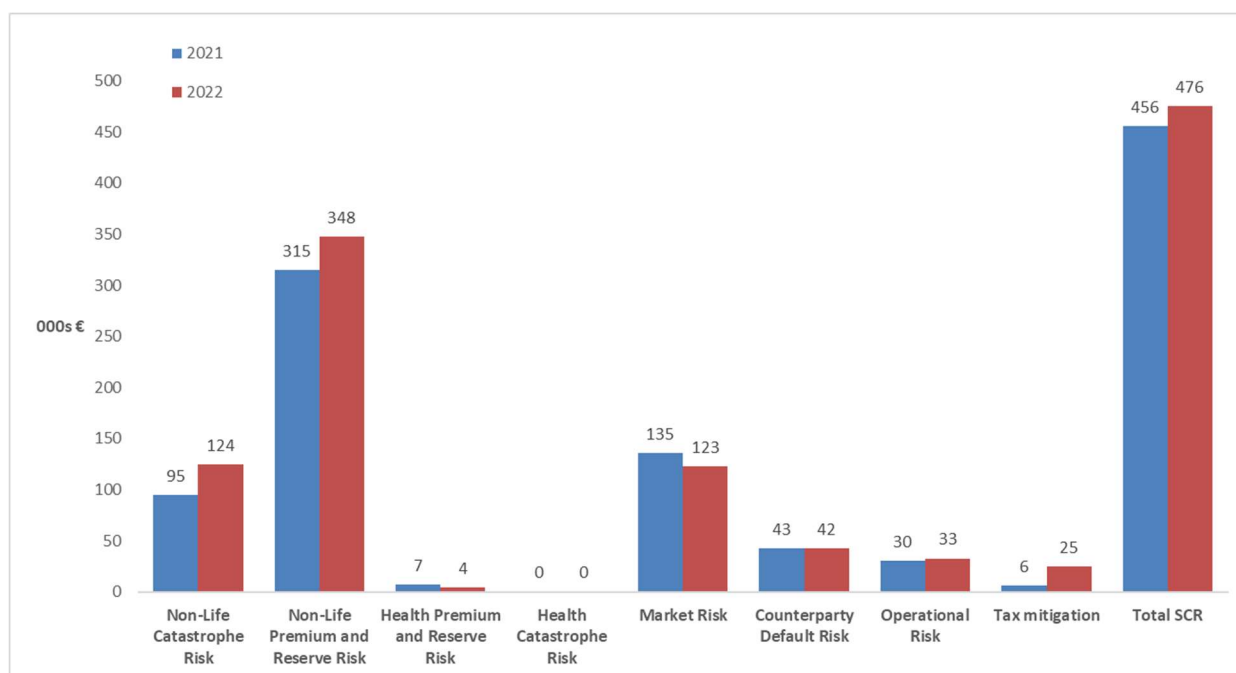
The changes in Solvency II valuation adjustments reflect those movements in sections D.1 to D.3 of this report. The change in SCR and MCR is explained in section E.2 of this report.

E.2 Minimum Capital Requirement and Solvency Capital Requirement

E.2.1 Solvency Capital Requirement ('SCR')

MS AISE uses the standard formula for the calculation of its SCR. The total SCR as at 31 December 2022 was €475.6 million, an increase of €19.9 million since 31 December 2021 (€455.7 million).

The following chart shows how the different components of the SCR have moved over the period.



The sum of the standalone risk categories is greater than the total SCR, owing to the benefits available to the Company through diversification. This is by way of the geographic, product and capital diversity MS AISE employs in managing its risks. This is also to reflect the likelihood that not all risks will emerge concurrently.

The main components driving the total SCR for MS AISE are:

1. **Non-life premium and reserve risk** (€347.9 million compared to €315.1 million in 2021), which is split evenly between premium and reserve risk.
2. **Market risk** (€122.7 million compared to €135.4 million in 2021). This is comprised of several sub-risks, the largest of which is spread risk (€73.2 million). The size of each sub-risk is heavily dependent on the chosen investment strategy.
3. **Non-life catastrophe risk** (€124.4 million compared to €95.0 million in 2021). This is mitigated by reinsurance programmes which lower the capital charge.
4. **Operational risk** (€32.7 million compared to €30.4 million in 2021). Information on the operational risks faced by MS AISE can be found in section C.5 of this report.
5. **Counterparty default risk** (€42.1 million compared to €42.7 million in 2021). This covers the risk to MS AISE of third parties defaulting on their obligations. Relevant third parties include reinsurers, counterparties providing derivative products and banks.

6. **Diversification credit** (€98.8 million compared to €105.4 million in 2021). This covers the benefit of diversification between the different SCR risk components and is dependent on the size and contribution of each subcomponent to the total SCR.
7. **Loss absorbing capacity of deferred taxes ('LAC DT')** (€25.1 million compared to €5.8 million in 2021). The LAC DT lowers the overall Solvency Capital Requirement and consists of two parts. On the one hand, tax losses carry-back potential which are future losses that can immediately be compensated by corporate income taxes paid on profits made in the current reporting year. Tax carry back facilities exist at the Dutch and French branches. On the other hand, deferred tax liabilities as recognized on the Solvency II balance sheet. No future tax loss compensation or deferred tax assets are taken into consideration by MS AISE as part of the SCR calculation.

For the calculation, no undertaking specific parameters or matching adjustments are being used. This also applies for the duration-based equity risk module which was not used. The volatility adjusted EIOPA yield curve, on the contrary, has been applied and is used in the standard formula SCR calculation.

E.2.2 SCR movement

Larger movements over the reporting year are explained below.

1. Market risk

Market risk has reduced by €12.7 million over the year. This is largely driven by equity risk with additional contributing movements from spread risk, offset by interest rate risk.

- Equity risk has decreased by €13.1 million following changes to the equity exposure throughout the year.
- Standalone spread risk decreased by €8.0 million over the reporting year. This movement is driven by less holdings in securitisation positions, better credit ratings of underlying exposures and lower overall duration.
- Interest rate risk has increased by €9.1 million, driven by a considerable increase in the interest rates and yield curves during 2022.
- Property risk has increased by €1.3 million following changes to the property fund exposures throughout the year compared to 2021.

2. Non-life underwriting risk

Non-life underwriting risk has increased by €46.5 million over the year. The majority of this stems from non-life premium and reserve risk, with a contributing increase from catastrophe risk.

- Non-life premium and reserve risk has increased by €32.8 million. The overall movement is driven by an increase in the premium and reserve risk volumes across the year. Premium volumes have increased by €122.9 million, mainly driven by the general liability and property segments. Reserve volumes have also increased by €64.9 million as a result of increases in the marine and motor segments.
- Non-life catastrophe risk has increased by €29.4 million over the year. There have been a number of changes across the reporting period that have contributed to this overall movement. The main reason is the update from the 2022 to the 2023 reinsurance structure, driving higher exposures under the fire and liability scenarios as a result of higher reinstatement premium for the international reinsurance programmes.

3. Diversification benefit

Diversification credit has decreased by €6.6 million because MS AISE's risk profile has become slightly more concentrated within non-life underwriting risk following the increases in reserve and premium risk. The proportion of the total risk attributed to non-life has increased from 65.5% to 70.0%.

4. LAC DT

The SCR tax mitigation, also known as LAC DT, has increased considerably throughout 2022. As mentioned above, the parameter consists of two components being the tax losses carried-back facilities and deferred tax liabilities as recognised on the Solvency II balance sheet. The latter component is higher compared to 2021, fully explaining the increase in LAC DT.

E.2.3 Minimum Capital Requirement (MCR)

The MCR calculation is a linear formula calculated using the net written premiums in the previous 12 months and the net best estimate technical provisions (excluding risk margin). This is subject to a minimum of 25% and maximum of 45% of the SCR. The MCR is subject to an absolute minimum depending on the nature of the undertaking (as defined in Article 129 (1) (d) of the Delegated Regulation (EU) 2009/138).

The total MCR as at 31 December 2022 is €186.5 million, which is 39.2% of the SCR (2021: €169.1 million and 37.1%).

The increase of €17.4 million over the period is driven by an increase in technical provisions across a range of classes, mostly relating to liability, marine and motor business.

E.3 Use of the duration-based equity risk sub-module in the calculation of the Solvency Capital Requirement

MS AISE does not use the duration-based equity risk sub-module in the calculation of the SCR.

E.4 Differences between the standard formula and any Internal Model used

MS AISE uses only the standard formula in the calculation of the SCR. Therefore, this section is not applicable.

E.5 Non-compliance with the Minimum Capital Requirement and non-compliance with the Solvency Capital Requirement

As disclosed in section E.1, MS AISE holds sufficient capital in excess of the MCR and SCR. This helps to ensure MS AISE's eligible own funds exceed SCR and MCR requirements on a continuous basis.

There are currently no foreseeable risks that could result in non-compliance with the SCR and/or MCR requirements.

E.6 Any other information

All material information relating to the Company's capital management up to 31 December 2022 has been disclosed in sub-sections E.1 to E.5 above.

Reference is also made to the capital increase highlighted as a subsequent event in section A.1.

Annex - specific Quantitative Reporting Templates (all amounts expressed in EUR thousands)

Includes the following public QRTs:

- S.01.02.e
- S.02.01.e
- S.05.01.e
- S.05.02.e
- S.17.01.e
- S.19.01.e.AY
- S.19.01.e.UY
- S.22.01.e
- S.23.01.e
- S.25.01.e
- S.28.01.e

MS Amlin Insurance Societas Europaeae

Solvency and Financial Condition Report

Disclosures

31 December

2022

(Monetary amounts in EUR thousands)

General information

Undertaking name	MS Amlin Insurance Societas Europea
Undertaking identification code	5493005Q3501B3PX1S31
Type of code of undertaking	LEI
Type of undertaking	Non-life undertakings
Country of authorisation	BE
Language of reporting	en
Reporting reference date	31 December 2022
Currency used for reporting	EUR
Accounting standards	Local GAAP
Method of Calculation of the SCR	Standard formula
Matching adjustment	No use of matching adjustment
Volatility adjustment	Use of volatility adjustment
Transitional measure on the risk-free interest rate	No use of transitional measure on the risk-free interest rate
Transitional measure on technical provisions	No use of transitional measure on technical provisions

List of reported templates

- S.02.01.02 - Balance sheet
- S.05.01.02 - Premiums, claims and expenses by line of business
- S.05.02.01 - Premiums, claims and expenses by country
- S.17.01.02 - Non-Life Technical Provisions
- S.19.01.21 - Non-Life insurance claims
- S.19.01.21 - Non-Life insurance claims
- S.22.01.21 - Impact of long term guarantees measures and transitionals
- S.23.01.01 - Own Funds
- S.25.01.21 - Solvency Capital Requirement - for undertakings on Standard Formula
- S.28.01.01 - Minimum Capital Requirement - Only life or only non-life insurance or reinsurance activity

S.02.01.02

Balance sheet

Solvency II value	
C0010	
	16,021
	14,944
	1,696,324
	0
	577,837
	122,029
	122,029
	0
	195,053
	0
	195,053
	0
	0
	793,015
	8,390
	0
	0
	0
	0
	179,237
	179,237
	165,983
	13,254
	0
	0
	13,879
	16,619
	51,845
	0
	66,366
	2,055,235

Assets

R0030	Intangible assets
R0040	Deferred tax assets
R0050	Pension benefit surplus
R0060	Property, plant & equipment held for own use
R0070	Investments (other than assets held for index-linked and unit-linked contracts)
R0080	<i>Property (other than for own use)</i>
R0090	<i>Holdings in related undertakings, including participations</i>
R0100	<i>Equities</i>
R0110	<i>Equities - listed</i>
R0120	<i>Equities - unlisted</i>
R0130	<i>Bonds</i>
R0140	<i>Government Bonds</i>
R0150	<i>Corporate Bonds</i>
R0160	<i>Structured notes</i>
R0170	<i>Collateralised securities</i>
R0180	<i>Collective Investments Undertakings</i>
R0190	<i>Derivatives</i>
R0200	<i>Deposits other than cash equivalents</i>
R0210	<i>Other investments</i>
R0220	Assets held for index-linked and unit-linked contracts
R0230	Loans and mortgages
R0240	<i>Loans on policies</i>
R0250	<i>Loans and mortgages to individuals</i>
R0260	<i>Other loans and mortgages</i>
R0270	Reinsurance recoverables from:
R0280	<i>Non-life and health similar to non-life</i>
R0290	<i>Non-life excluding health</i>
R0300	<i>Health similar to non-life</i>
R0310	<i>Life and health similar to life, excluding index-linked and unit-linked</i>
R0320	<i>Health similar to life</i>
R0330	<i>Life excluding health and index-linked and unit-linked</i>
R0340	<i>Life index-linked and unit-linked</i>
R0350	Deposits to cedants
R0360	Insurance and intermediaries receivables
R0370	Reinsurance receivables
R0380	Receivables (trade, not insurance)
R0390	Own shares (held directly)
R0400	Amounts due in respect of own fund items or initial fund called up but not yet paid in
R0410	Cash and cash equivalents
R0420	Any other assets, not elsewhere shown
R0500	Total assets

S.02.01.02

Balance sheet

Solvency II value		
C0010		
R0510	Technical provisions - non-life	1,158,429
R0520	<i>Technical provisions - non-life (excluding health)</i>	1,133,395
R0530	<i>TP calculated as a whole</i>	0
R0540	<i>Best Estimate</i>	1,064,546
R0550	<i>Risk margin</i>	68,849
R0560	<i>Technical provisions - health (similar to non-life)</i>	25,033
R0570	<i>TP calculated as a whole</i>	0
R0580	<i>Best Estimate</i>	24,022
R0590	<i>Risk margin</i>	1,012
R0600	Technical provisions - life (excluding index-linked and unit-linked)	0
R0610	<i>Technical provisions - health (similar to life)</i>	0
R0620	<i>TP calculated as a whole</i>	
R0630	<i>Best Estimate</i>	
R0640	<i>Risk margin</i>	
R0650	<i>Technical provisions - life (excluding health and index-linked and unit-linked)</i>	0
R0660	<i>TP calculated as a whole</i>	
R0670	<i>Best Estimate</i>	
R0680	<i>Risk margin</i>	
R0690	Technical provisions - index-linked and unit-linked	0
R0700	<i>TP calculated as a whole</i>	
R0710	<i>Best Estimate</i>	
R0720	<i>Risk margin</i>	
R0740	Contingent liabilities	0
R0750	Provisions other than technical provisions	
R0760	Pension benefit obligations	5,805
R0770	Deposits from reinsurers	
R0780	Deferred tax liabilities	23,930
R0790	Derivatives	6,310
R0800	Debts owed to credit institutions	0
R0810	Financial liabilities other than debts owed to credit institutions	0
R0820	Insurance & intermediaries payables	15,033
R0830	Reinsurance payables	
R0840	Payables (trade, not insurance)	87,724
R0850	Subordinated liabilities	2,486
R0860	<i>Subordinated liabilities not in BOF</i>	
R0870	<i>Subordinated liabilities in BOF</i>	2,486
R0880	Any other liabilities, not elsewhere shown	
R0900	Total liabilities	1,299,718
R1000	Excess of assets over liabilities	755,517

S.05.02.01

Premiums, claims and expenses by country

Non-life

	C0010	C0020	C0030	C0040	C0050	C0060	C0070
	Home Country	Top 5 countries (by amount of gross premiums written) - non-life obligations			Top 5 countries (by amount of gross premiums written) - non-life obligations		Total Top 5 and home country
		NL	GB	FR			
	C0080	C0090	C0100	C0110	C0120	C0130	C0140
R0010							
	Premiums written						
R0110	Gross - Direct Business	200,922	436,585	81,035	193,070		911,612
R0120	Gross - Proportional reinsurance accepted	10,001	13,730	479	361		24,571
R0130	Gross - Non-proportional reinsurance accepted	0	0	0	0		0
R0140	Reinsurers' share	43,344	12,111	9,093	29,976		94,524
R0200	Net	167,579	438,204	72,422	163,454		841,659
	Premiums earned						
R0210	Gross - Direct Business	190,371	415,514	92,722	185,703		884,310
R0220	Gross - Proportional reinsurance accepted	12,173	12,158	339	309		24,979
R0230	Gross - Non-proportional reinsurance accepted	0	0	0	0		0
R0240	Reinsurers' share	44,076	14,657	8,004	29,271		96,008
R0300	Net	158,469	413,015	85,057	156,741		813,281
	Claims incurred						
R0310	Gross - Direct Business	146,692	273,512	39,162	145,533		604,898
R0320	Gross - Proportional reinsurance accepted	7,890	1,472	1,161	548		11,072
R0330	Gross - Non-proportional reinsurance accepted	0	0	0	0		0
R0340	Reinsurers' share	47,080	21,031	-2,119	58,414		124,405
R0400	Net	107,502	253,954	42,442	87,667		491,564
	Changes in other technical provisions						
R0410	Gross - Direct Business	0	0	0	0		0
R0420	Gross - Proportional reinsurance accepted	0	0	0	0		0
R0430	Gross - Non-proportional reinsurance accepted	0	0	0	0		0
R0440	Reinsurers' share	0	0	0	0		0
R0500	Net	0	0	0	0		0
R0550	Expenses incurred	63,591	154,710	37,683	63,651		319,635
R1200	Other expenses						
R1300	Total expenses						319,635

Non-Life Technical Provisions

Direct business and accepted proportional reinsurance													Accepted non-proportional reinsurance				Total Non-Life obligation
Medical expense insurance	Income protection insurance	Workers' compensation insurance	Motor vehicle liability insurance	Other motor insurance	Marine, aviation and transport insurance	Fire and other damage to property insurance	General liability insurance	Credit and suretyship insurance	Legal expenses insurance	Assistance	Miscellaneous financial loss	Non-proportional health reinsurance	Non-proportional casualty reinsurance	Non-proportional marine, aviation and transport reinsurance	Non-proportional property reinsurance		
C0020	C0030	C0040	C0050	C0060	C0070	C0080	C0090	C0100	C0110	C0120	C0130	C0140	C0150	C0160	C0170	C0180	
R0010	Technical provisions calculated as a whole																
	0	0	0	0	0	0	0	0	0	0	0	0				0	
R0050	Total Recoverables from reinsurance/SPV and Finite Re after the adjustment for expected losses due to counterparty default associated to TP calculated as a whole																
																0	
	Technical provisions calculated as a sum of BE and RM																
	Best estimate																
	Premium provisions																
R0060	Gross																
	-298	-429	0	-550	-7,265	-25,163	-20,401	-42,911	0	-137	-3	-12,539				-109,695	
R0140	Total recoverable from reinsurance/SPV and Finite Re after the adjustment for expected losses due to counterparty default																
	-32	9	0	-1,569	-2,046	-11,440	-36,676	-13,925	0	-41	0	-7,484				-73,204	
R0150	Net Best Estimate of Premium Provisions																
	-266	-437	0	1,019	-5,219	-13,723	16,275	-28,986	0	-96	-3	-5,055				-36,492	
	Claims provisions																
R0160	Gross																
	9,689	4,645	10,414	181,137	33,016	210,398	267,351	447,312	0	1,955	35	32,311				1,198,263	
R0240	Total recoverable from reinsurance/SPV and Finite Re after the adjustment for expected losses due to counterparty default																
	592	8	12,676	11,200	50	31,437	93,887	82,427	0	213	0	19,948				252,441	
R0250	Net Best Estimate of Claims Provisions																
	9,097	4,637	-2,262	169,937	32,966	178,961	173,464	364,885	0	1,742	34	12,362				945,822	
R0260	Total best estimate - gross																
	9,391	4,217	10,414	180,588	25,752	185,234	246,950	404,401	0	1,819	31	19,772				1,088,568	
R0270	Total best estimate - net																
	8,831	4,199	-2,262	170,956	27,747	165,238	189,738	335,898	0	1,646	31	7,308				909,331	
R0280	Risk margin																
	598	414	0	12,041	3,845	15,345	13,948	22,591	0	125	3	951				69,861	
	Amount of the transitional on Technical Provisions																
R0290	Technical Provisions calculated as a whole																
																0	
R0300	Best estimate																
																0	
R0310	Risk margin																
																0	
R0320	Technical provisions - total																
	9,989	4,630	10,414	192,628	29,597	200,579	260,898	426,992	0	1,944	34	20,722				1,158,429	
	Recoverable from reinsurance contract/SPV and Finite Re after the adjustment for expected losses due to counterparty default - total																
R0330		560	17	12,676	9,632	-1,995	19,996	57,212	68,502	0	172	0	12,464			179,237	
R0340	Technical provisions minus recoverables from reinsurance/SPV and Finite Re - total																
	9,429	4,613	-2,262	182,997	31,592	180,583	203,686	358,490	0	1,772	34	8,258				979,192	

S.19.01.21

Non-Life insurance claims

Total Non-life business

Z0020

Accident year / underwriting year

Gross Claims Paid (non-cumulative)														
(absolute amount)														
Year	C0010	C0020	C0030	C0040	C0050	C0060	C0070	C0080	C0090	C0100	C0110	C0170	C0180	
	Development year										In Current year	Sum of years (cumulative)		
	0	1	2	3	4	5	6	7	8	9			10 & +	
R0100	Prior											12,410	12,410	12,410
R0160	2013	57,840	69,043	19,705	10,598	7,868	4,662	3,544	7,084	2,554	1,889		1,889	184,788
R0170	2014	58,089	78,408	27,728	12,393	7,932	5,429	4,905	3,710	5,980		5,980	5,980	204,574
R0180	2015	58,944	85,703	32,289	15,649	9,536	7,908	4,427	9,193				9,193	223,649
R0190	2016	68,350	92,204	34,791	19,728	14,102	13,299	8,266					8,266	250,741
R0200	2017	80,228	103,322	33,225	19,710	10,413	17,022						17,022	263,921
R0210	2018	95,261	123,457	35,857	20,603	18,588							18,588	293,766
R0220	2019	79,213	110,372	42,897	32,475								32,475	264,957
R0230	2020	62,978	91,305	48,406									48,406	202,688
R0240	2021	73,311	127,608										127,608	200,920
R0250	2022	48,704											48,704	48,704
R0260												Total	330,542	2,151,118

Gross Undiscounted Best Estimate Claims Provisions													
(absolute amount)													
Year	C0200	C0210	C0220	C0230	C0240	C0250	C0260	C0270	C0280	C0290	C0300	C0360	
	Development year										Year end (discounted data)		
	0	1	2	3	4	5	6	7	8	9		10 & +	
R0100	Prior											84,134	77,706
R0160	2013	0	0	0	32,829	30,783	26,266	21,751	12,977	10,174	5,925		5,157
R0170	2014	0	0	49,082	38,703	31,719	25,256	19,726	18,765	17,929			16,283
R0180	2015	0	98,489	72,938	58,893	48,108	37,026	33,817	28,196				25,413
R0190	2016	156,679	136,526	102,255	78,759	63,919	50,631	46,702					42,237
R0200	2017	229,690	119,354	89,658	69,079	58,441	51,079						45,927
R0210	2018	212,981	114,246	83,694	65,076	60,544							55,225
R0220	2019	244,301	191,586	156,015	129,260								119,759
R0230	2020	218,672	144,324	110,909									101,987
R0240	2021	270,915	173,018										157,432
R0250	2022	368,334											340,699
R0260												Total	987,825

S.22.01.21

Impact of long term guarantees measures and transitionals

	Amount with Long Term Guarantee measures and transitionals	Impact of transitional on technical provisions	Impact of transitional on interest rate	Impact of volatility adjustment set to zero	Impact of matching adjustment set to zero
	C0010	C0030	C0050	C0070	C0090
R0010 Technical provisions	1,158,429	0	0	4,879	0
R0020 Basic own funds	758,003	0	0	-4,879	0
R0050 Eligible own funds to meet Solvency Capital Requirement	758,003	0	0	-4,879	0
R0090 Solvency Capital Requirement	475,622	0	0	969	0
R0100 Eligible own funds to meet Minimum Capital Requirement	758,003	0	0	-4,879	0
R0110 Minimum Capital Requirement	186,499	0	0	474	0

S.23.01.01

Own Funds

Basic own funds before deduction for participations in other financial sector as foreseen in article 68 of Delegated Regulation 2015/35

R0010	Ordinary share capital (gross of own shares)
R0030	Share premium account related to ordinary share capital
R0040	Initial funds, members' contributions or the equivalent basic own-fund item for mutual and mutual-type undertakings
R0050	Subordinated mutual member accounts
R0070	Surplus funds
R0090	Preference shares
R0110	Share premium account related to preference shares
R0130	Reconciliation reserve
R0140	Subordinated liabilities
R0160	An amount equal to the value of net deferred tax assets
R0180	Other own fund items approved by the supervisory authority as basic own funds not specified above
R0220	Own funds from the financial statements that should not be represented by the reconciliation reserve and do not meet the criteria to be classified as Solvency II own funds
R0230	Deductions for participations in financial and credit institutions
R0290	Total basic own funds after deductions

Ancillary own funds

R0300	Unpaid and uncalled ordinary share capital callable on demand
R0310	Unpaid and uncalled initial funds, members' contributions or the equivalent basic own fund item for mutual and mutual - type undertakings, callable on demand
R0320	Unpaid and uncalled preference shares callable on demand
R0330	A legally binding commitment to subscribe and pay for subordinated liabilities on demand
R0340	Letters of credit and guarantees under Article 96(2) of the Directive 2009/138/EC
R0350	Letters of credit and guarantees other than under Article 96(2) of the Directive 2009/138/EC
R0360	Supplementary members calls under first subparagraph of Article 96(3) of the Directive 2009/138/EC
R0370	Supplementary members calls - other than under first subparagraph of Article 96(3) of the Directive 2009/138/EC
R0390	Other ancillary own funds
R0400	Total ancillary own funds

Available and eligible own funds

R0500	Total available own funds to meet the SCR
R0510	Total available own funds to meet the MCR
R0540	Total eligible own funds to meet the SCR
R0550	Total eligible own funds to meet the MCR

R0580	SCR
R0600	MCR
R0620	Ratio of Eligible own funds to SCR
R0640	Ratio of Eligible own funds to MCR

Reconciliation reserve

R0700	Excess of assets over liabilities
R0710	Own shares (held directly and indirectly)
R0720	Foreseeable dividends, distributions and charges
R0730	Other basic own fund items
R0740	Adjustment for restricted own fund items in respect of matching adjustment portfolios and ring fenced funds
R0760	Reconciliation reserve

Expected profits

R0770	Expected profits included in future premiums (EPIFP) - Life business
R0780	Expected profits included in future premiums (EPIFP) - Non- life business
R0790	Total Expected profits included in future premiums (EPIFP)

Total	Tier 1 unrestricted	Tier 1 restricted	Tier 2	Tier 3
C0010	C0020	C0030	C0040	C0050
140,000	140,000		0	
0	0		0	
0	0		0	
0		0	0	0
0	0			
0		0	0	0
0		0	0	0
615,517	615,517			
2,486		0	2,486	0
0				0
0	0	0	0	0
0				
758,003	755,517	0	2,486	0

0				
0				
0				
0				
0				
0				
0				
0				
0				
0				
0			0	0

758,003	755,517	0	2,486	0
758,003	755,517	0	2,486	
758,003	755,517	0	2,486	0
758,003	755,517	0	2,486	

475,622
186,499
159.37%
406.44%

C0060
755,517
0
140,000
0
615,517

152,286
152,286

S.25.01.21

Solvency Capital Requirement - for undertakings on Standard Formula

	Gross solvency capital requirement	USP	Simplifications
	C0110	C0090	C0120
R0010 Market risk	122,659		
R0020 Counterparty default risk	42,109		
R0030 Life underwriting risk	0		
R0040 Health underwriting risk	4,398		
R0050 Non-life underwriting risk	397,676		
R0060 Diversification	-98,799		
R0070 Intangible asset risk	0		
R0100 Basic Solvency Capital Requirement	468,042		
Calculation of Solvency Capital Requirement			
R0130 Operational risk	32,657		
R0140 Loss-absorbing capacity of technical provisions	0		
R0150 Loss-absorbing capacity of deferred taxes	-25,077		
R0160 Capital requirement for business operated in accordance with Art. 4 of Directive 2003/41/EC	0		
R0200 Solvency Capital Requirement excluding capital add-on	475,622		
R0210 Capital add-ons already set	0		
R0220 Solvency capital requirement	475,622		
Other information on SCR			
R0400 Capital requirement for duration-based equity risk sub-module	0		
R0410 Total amount of Notional Solvency Capital Requirements for remaining part	0		
R0420 Total amount of Notional Solvency Capital Requirements for ring fenced funds	0		
R0430 Total amount of Notional Solvency Capital Requirements for matching adjustment portfolios	0		
R0440 Diversification effects due to RFF nSCR aggregation for article 304	0		
Approach to tax rate			
R0590 Approach based on average tax rate	Yes		
Calculation of loss absorbing capacity of deferred taxes			
LAC DT			
C0130			
R0640 LAC DT	-25,077		
R0650 LAC DT justified by reversion of deferred tax liabilities	-23,930		
R0660 LAC DT justified by reference to probable future taxable economic profit	0		
R0670 LAC DT justified by carry back, current year	-1,147		
R0680 LAC DT justified by carry back, future years	0		
R0690 Maximum LAC DT	0		

USP Key

For life underwriting risk:

- 1 - Increase in the amount of annuity benefits
- 9 - None

For health underwriting risk:

- 1 - Increase in the amount of annuity benefits
- 2 - Standard deviation for NSLT health premium risk
- 3 - Standard deviation for NSLT health gross premium risk
- 4 - Adjustment factor for non-proportional reinsurance
- 5 - Standard deviation for NSLT health reserve risk
- 9 - None

For non-life underwriting risk:

- 4 - Adjustment factor for non-proportional reinsurance
- 6 - Standard deviation for non-life premium risk
- 7 - Standard deviation for non-life gross premium risk
- 8 - Standard deviation for non-life reserve risk
- 9 - None

S.28.01.01

Minimum Capital Requirement - Only life or only non-life insurance or reinsurance activity

Linear formula component for non-life insurance and reinsurance obligations

R0010 MCR_{NL} Result

C0010

186,499

Net (of reinsurance/SPV) best estimate and TP calculated as a whole	Net (of reinsurance) written premiums in the last 12 months
---	---

R0020	Medical expense insurance and proportional reinsurance
R0030	Income protection insurance and proportional reinsurance
R0040	Workers' compensation insurance and proportional reinsurance
R0050	Motor vehicle liability insurance and proportional reinsurance
R0060	Other motor insurance and proportional reinsurance
R0070	Marine, aviation and transport insurance and proportional reinsurance
R0080	Fire and other damage to property insurance and proportional reinsurance
R0090	General liability insurance and proportional reinsurance
R0100	Credit and suretyship insurance and proportional reinsurance
R0110	Legal expenses insurance and proportional reinsurance
R0120	Assistance and proportional reinsurance
R0130	Miscellaneous financial loss insurance and proportional reinsurance
R0140	Non-proportional health reinsurance
R0150	Non-proportional casualty reinsurance
R0160	Non-proportional marine, aviation and transport reinsurance
R0170	Non-proportional property reinsurance

C0020	C0030
8,831	4,704
4,199	6,027
0	398
170,956	73,641
27,747	111,912
165,238	297,477
189,738	176,584
335,898	189,055
0	0
1,646	2,037
31	41
7,308	16,757
0	0
0	0
0	0
0	0

Linear formula component for life insurance and reinsurance obligations

R0200 MCR_L Result

C0040

0

Net (of reinsurance/SPV) best estimate and TP calculated as a whole	Net (of reinsurance/SPV) total capital at risk
---	--

R0210	Obligations with profit participation - guaranteed benefits
R0220	Obligations with profit participation - future discretionary benefits
R0230	Index-linked and unit-linked insurance obligations
R0240	Other life (re)insurance and health (re)insurance obligations
R0250	Total capital at risk for all life (re)insurance obligations

C0050	C0060

Overall MCR calculation

R0300	Linear MCR
R0310	SCR
R0320	MCR cap
R0330	MCR floor
R0340	Combined MCR
R0350	Absolute floor of the MCR
R0400	Minimum Capital Requirement

C0070

186,499
500,704
225,317
125,176
186,499
4,000
186,499

A decorative graphic consisting of multiple thin, parallel red lines that form a wavy, ribbon-like shape. It starts from the left side of the page and flows towards the right, curving upwards and then downwards, creating a sense of movement and depth. The lines are more densely packed in some areas, creating a gradient of red intensity.

MS  Amlin

MS Amlin Insurance SE
Koning Albert II-laan 37
B-1030 Brussel

Tel: +32 (0)2 894 70 00

msamlin.com